



FITTING INSTRUCTIONS FOR CP0313 CRASH PROTECTORS
KAWASAKI ER6-N 2012

Page | 1



PICTURE A



PICTURE B



REAR OF BIKE

FRONT OF BIKE

PICTURE C

THIS KIT CONTAINS THE ITEMS PICTURED AND LABELLED BELOW.
DO NOT PROCEED UNTIL YOU ARE SURE ALL PARTS ARE PRESENT.

Please note that the way the kit is packed does not necessarily represent the way of mounting to the bike

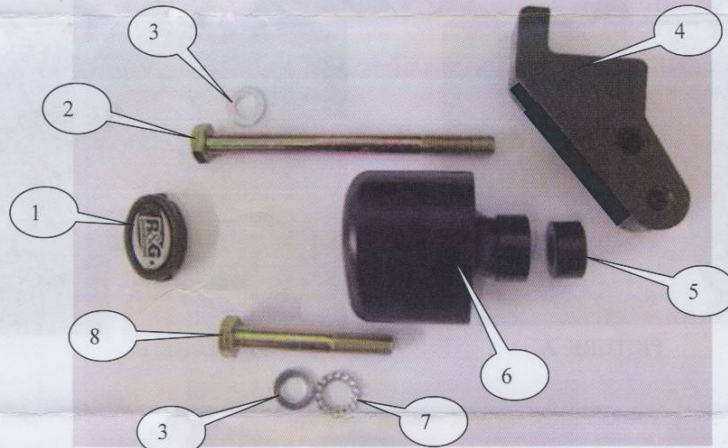
Please note that in cases where kits are packed with rubber washers holding the components onto the bolt – *the rubber washers should be thrown away!*

R&G Racing
Unit 1, Shelley's Lane, East Worldham, Alton, Hampshire, GU34 3AQ
Tel: +44 (0)1420 89007 Fax: +44 (0)1420 87301 www.rg-racing.com Email: info@rg-racing.com

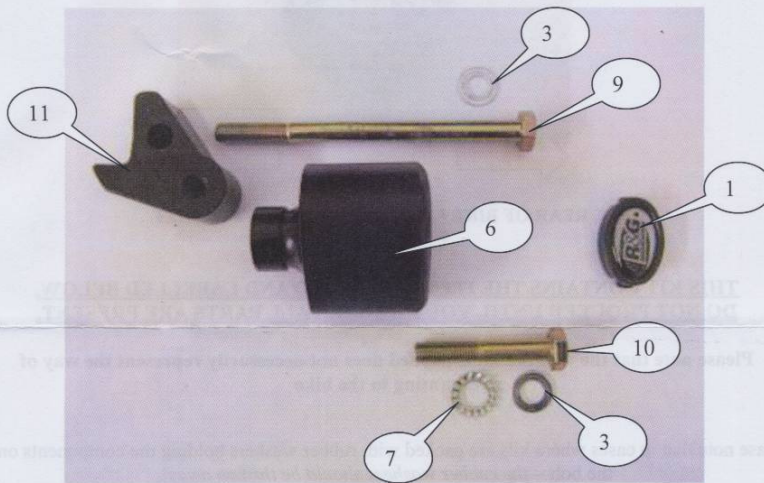


THE PARTS SHOWN MAY BE REPRESENTATIVE ONLY (FOR CLARITY OF INSTRUCTIONS ONLY)

Page | 2



LEFT HAND SIDE



RIGHT HAND SIDE

R&G Racing
Unit 1, Shelley's Lane, East Worldham, Alton, Hampshire, GU34 3AQ
Tel: +44 (0)1420 89007 Fax: +44 (0)1420 87301 www.rg-racing.com Email: info@rg-racing.com



TOOLS REQUIRED

- Socket set to include 14 and 17mm sockets and wrench.
- Set of metric Allen keys to include 4 and 5mm A/F.
 - Torque wrench (up to 40 Nm).

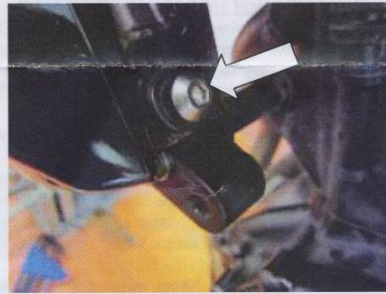
LEGEND

Page | 3

- ITEM 1 = BC0002 CRASH PROTECTOR CAPS (x2).
 ITEM 2 = M10x1.25x130mm LONG HEX HEAD BOLT (L-H-S FRAME/BLOCK BOLT) (x1).
 ITEM 3 = M10 PLAIN WASHERS (x2).
 ITEM 4 = M0297 MOUNTING BLOCK (L-H-S=LARGER) (x1).
 ITEM 5 = S0322 SPACER (L-H-S= 12mm LONG) (x1).
 ITEM 6 = B0431 with CS341 (10mm) (BOTH CRASH PROTECTORS) (x2).
 ITEM 7 = LW0001 (M12 SHAKE PROOF WASHERS) (x2).
 ITEM 8 = M10x1.25x75mm LONG HEX HEAD BOLT (L-H-S CRASH PROTECTOR BOLT) (x1).
 ITEM 9 = M10x1.25x140mm LONG HEX HEAD BOLT (R-H-S FRAME/BLOCK BOLT) (x1).
 ITEM 10 = M10x1.25x65mm LONG HEX HEAD BOLT (R-H-S CRASH PROTECTOR BOLT) (x1).
 ITEM 11 = M0298 MOUNTING BLOCK (R-H-S=SMALLER) (x1).
 ITEM 12 = LENGTH OF SELF-ADHESIVE FOAM (x1) (NOT SHOWN).



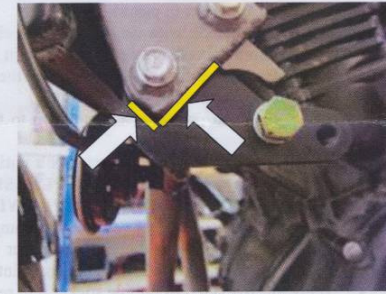
PICTURE D



PICTURE E



PICTURE F



PICTURE G

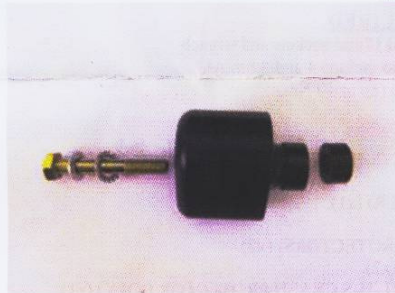
R&G Racing

Unit 1, Shelley's Lane, East Worldham, Alton, Hampshire, GU34 3AQ

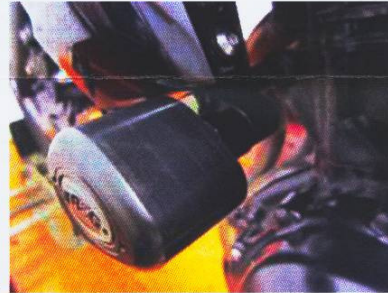
Tel: +44 (0)1420 89007 Fax: +44 (0)1420 87301 www.rg-racing.com Email: info@rg-racing.com



Page | 4



PICTURE H



PICTURE I

FITTING INSTRUCTIONS

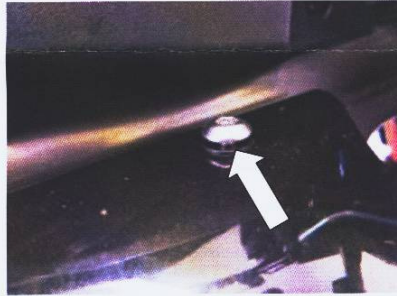
Near side (left side as you sit on bike)

- Remove the two bolts arrowed in pictures D and E, and remove the left hand side fairing.
- Remove the engine/frame bolt in position arrowed in picture F (using 14mm socket) be careful as the nut may fall out (this must be reused on assembly).
- Cut and stick the self-adhesive foam in the positions arrowed in picture G (this helps prevent marking of the frame on assembly).
- Slide one of the 10mm washers (item 3) onto the M10 hexagon headed bolt (item 2=130mm long) so washer sits against head of the bolt.
- Place the mounting block (item 4) in position as shown in picture G.
- Place the bolt with washer through the unthreaded hole in the mounting block, through the frame and original frame/engine spacer, please ensure the in-board nut is in position and tighten (Do not exceed 40 Nm of torque).
- Replace left hand side fairing.
- Slide one of the 10mm washers (item 3) onto the M10 hexagon headed bolt (item 8=75mm long) so the washer sits against head of the bolt as shown in picture H.
- Next slide one of the serrated locking washers (item 7) over the bolt so it sits against the washer just fitted as shown in picture H.
- Next slide the bolt with washers through either crash protector (item 6) so head of bolt goes into counter-bore in crash protector as shown in picture H.
- Place one of the spacer (item 5) over the exposed end of the bolt so it sits against the crash protector as shown in picture H.
- Offer the crash protector assembly up to the threaded mounting hole in the mounting block as shown in picture I.
- Finally tighten the crash protector bolt until you feel some compression from inside the protector using 17mm socket and wrench. **PLEASE NOTE THE CRASH PROTECTOR MUST BE POSITIONED AS IN PICTURE 'C' WITH BIGGER END TOWARD FRONT OF BIKE.** Turn a little more so that you feel the compression increase slightly. Then apply a quarter turn. Do not over tighten as damage can occur to the bike. Do not exceed 40 Nm of torque. Please ensure the crash protector does not come into contact with the fairing panel as you tighten the bolt.
- If not already fitted fit bubble sticker into recess of crash protector cap.
- Fit crash protector cap into crash protector.

R&G Racing

Unit 1, Shelley's Lane, East Worldham, Alton, Hampshire, GU34 3AQ

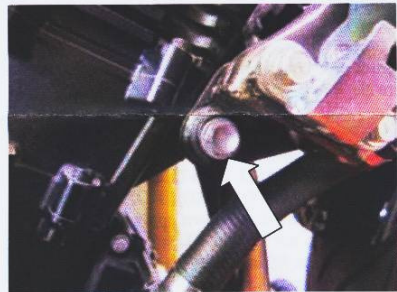
Tel: +44 (0)1420 89007 Fax: +44 (0)1420 87301 www.rg-racing.com Email: info@rg-racing.com



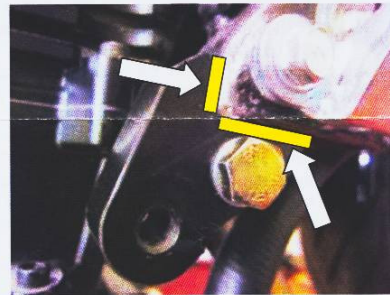
PICTURE J



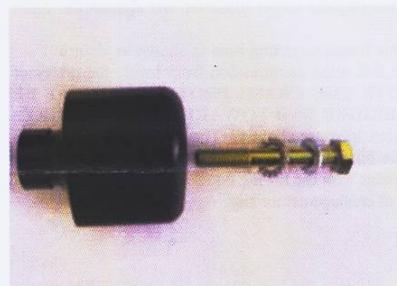
PICTURE K



PICTURE L



PICTURE M



PICTURE N



PICTURE O



Off side (right side as you sit on bike)

- Remove the two bolts arrowed in pictures J and K, and remove the right hand side fairing.
- Remove the engine/frame bolt in position arrowed in picture L (using 14mm socket) be careful as the nut may fall out (this must be reused on assembly).
- Cut and stick the self-adhesive foam in the positions arrowed in picture M (this helps prevent marking of the frame on assembly).
- Slide one of the 10mm washers (item 3) onto the M10 hexagon headed bolt (item 9=140mm long) so washer sits against head of the bolt.
- Place the mounting block (item 11) in position as shown in picture M.
- Place the bolt with washer though the unthreaded hole in the mounting block, through the frame and original frame/engine spacer, please ensure the in-board nut is in position and tighten (Do not exceed 40 Nm of torque).
- Replace left hand side fairing.
- Slide one of the 10mm washers (item 3) onto the M10 hexagon headed bolt (item 10=65mm long) so the washer sits against head of the bolt as shown in picture N.
- Next slide one of the serrated locking washers (item 7) over the bolt so it sits against the washer just fitted as shown in picture N.
- Next slide the bolt with washers the remaining crash protector (item 6) so head of bolt goes into counter-bore in crash protector as shown in picture N.
- Offer the crash protector assembly up to the threaded mounting hole in the mounting block as shown in picture O.
- Finally tighten the crash protector bolt until you feel some compression from inside the protector using 17mm socket and wrench. **PLEASE NOTE THE CRASH PROTECTOR MUST BE POSITIONED AS IN PICTURE 'C' WITH BIGGER END TOWARD FRONT OF BIKE.** Turn a little more so that you feel the compression increase slightly. Then apply a quarter turn. Do not over tighten as damage can occur to the bike. Do not exceed 40 Nm of torque. Please ensure the crash protector does not come into contact with the fairing panel as you tighten the bolt.
- If not already fitted fit bubble sticker into recess of crash protector cap.
- Fit crash protector cap into crash protector.
- Place one of the longer spacers over the exposed end of the bolt so it sits against the crash protector as shown in picture 'H' (please note the slightly larger diameter sits against the crash protector).
- Offer the crash protector assembly up to the engine/frame mounting hole as shown in picture 'I'.
- Finally tighten the crash protector bolt until you feel some compression from inside the protector using 17mm socket and wrench. **PLEASE NOTE THE CRASH PROTECTOR MUST BE POSITIONED AS IN PICTURE 'C' WITH BIGGER END TOWARD FRONT OF BIKE.** Turn a little more so that you feel the compression increase slightly. Then apply a quarter turn. Do not over tighten as damage can occur to the bike. Do not exceed 40Nm of torque. Please ensure the crash protector does not come into contact with the fairing panel as you tighten the bolt.
- If not already fitted fit bubble sticker into recess of crash protector cap.
- Fit crash protector cap into crash protector.

Issue 1 20/04/2012 (NSY)

R&G Racing

Unit 1, Shelley's Lane, East Worldham, Alton, Hampshire, GU34 3AQ
 Tel: +44 (0)1420 89007 Fax: +44 (0)1420 87301 www.rg-racing.com Email: info@rg-racing.com



CONSUMER NOTICE

Page | 7

The catalogue description and any exhibition of samples are only broad indications of the Products and R&G may make design changes which do not diminish their performance or visual appeal and supplying them in such state shall conform to the order. The Buyer acknowledges no representation or warranty (other than as to title) has been given or will apply to the Products other than those in R&G's order or confirmation and the Buyer confirms it has chosen the Products as being of merchantable quality and suitable for its particular purposes. Where R&G fits the Products or undertakes other services it shall exercise reasonable skill and care and rectify any fault free of charge unless the workmanship has been disturbed. The Buyer is responsible for ensuring that the warranty on the motorcycle is not affected by the fitting of the Products. On return of any defective Products R&G shall at its option either supply a replacement or refund the purchase money but shall not be liable if the Products have been modified or used or maintained otherwise than in accordance with R&G's or manufacturer's instructions and good engineering practice or if the defect arises from accident or neglect. Other than identified above and subject to R&G not limiting its liability for causing death and personal injury, it shall not be liable for indirect or consequential loss and otherwise its liability shall be limited to the amounts paid by the Buyer for the Products or the fitting or service concerned. These terms do not affect the Buyer's statutory rights.

R&G RACING RETURNS POLICY (NON-FAULTY GOODS)

Returns must be pre-authorized (if not pre-authorized the return will be rejected). Goods may only be returned direct to us if they were purchased direct from us (customer must prove if necessary). Otherwise to be returned to original vendor. Goods must be in re-sellable condition, in the opinion of R&G Racing. All returns are subject to a 25% restocking and handling fee (25% of the gross value exc. P&P – at the prevailing price at time of purchase). The customer must pay any and all carriage charges. No returns of discontinued products, unless within 14 days of purchase. This policy does not affect your statutory rights and does not refer to faulty goods.