



YOSHIMURA

RESEARCH&DEVELOPMENT OF AMERICA, INC.

5420 DANIELS STREET STE A, CHINO CA., 91710 · (800) 634-9166 · (909) 628-4722 · FAX (909) 591-2198

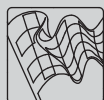
www.yoshimura-rd.com

RACE SERIES

Qualified Manufacturer Declared "Modified Part"

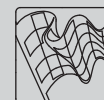
2017
Aprilia RSV4
Tuono
19250MP720 (Ti/CF)
Titanium Alpha Taper Slip-On

FOR CLOSED COURSE COMPETITION ONLY; NOT INTENDED FOR STREET USE



Race Series systems are:

- NOT CARB/EPA tail-pipe emissions compliant.
- NOT street legal.
- For "Closed Course Competition" use only.

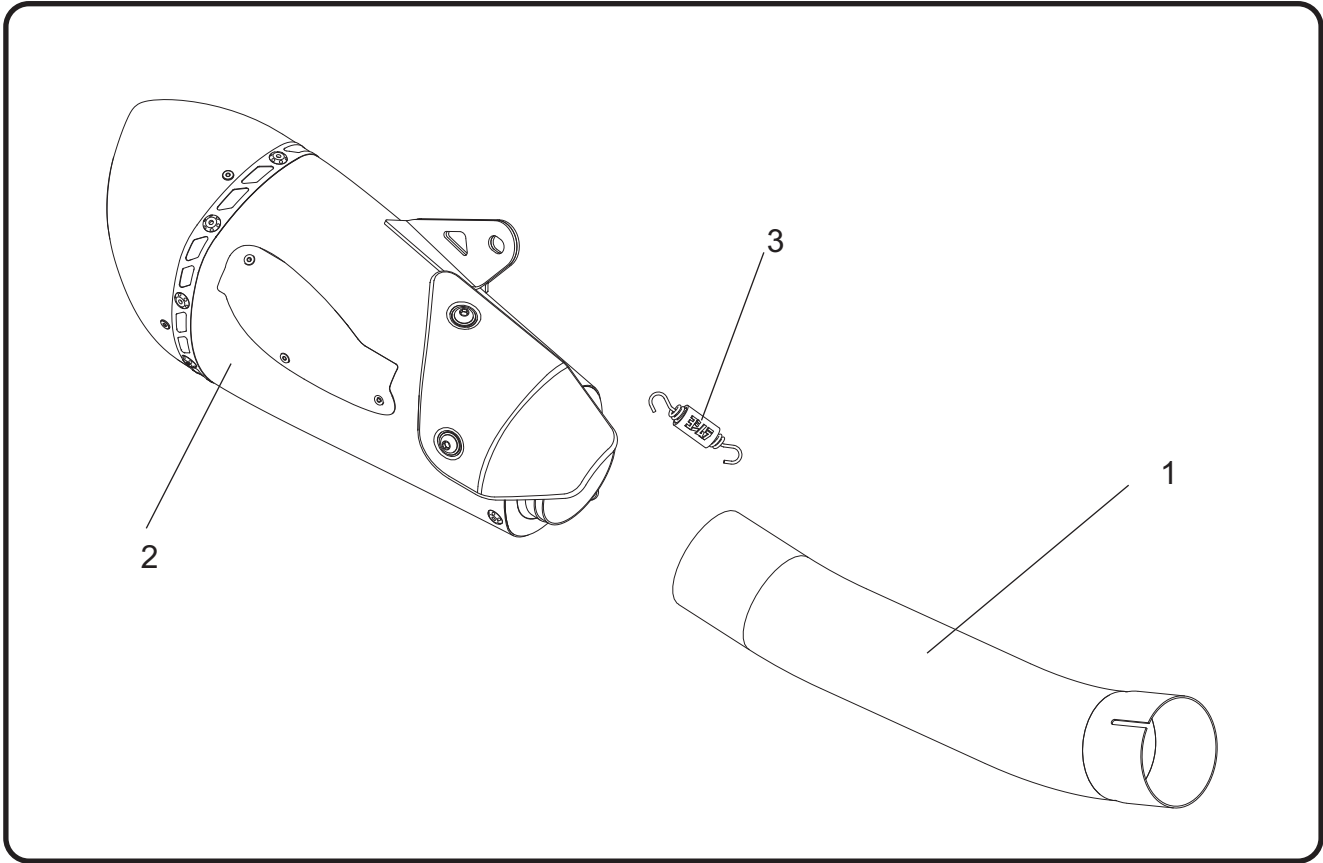


You must know how to remove and replace your stock exhaust in order to install this product otherwise have it installed by a professional mechanic. Keep all stock parts from your existing system as some components may be necessary to install your new Yoshimura exhaust depending on the application. Read through all instructions before beginning installation. Exhaust system can be extremely hot. Let motorcycle cool down before beginning installation. Always wear hand and eye protection and take precautionary measures to avoid injury.



NOTE: IN THE STATE OF CALIFORNIA, IT IS ILLEGAL TO MODIFY THE EMISSION CONTROL SYSTEM, WHICH INCLUDES THE CARBURETORS OF ANY VEHICLE.

Assembly Diagram



No.	Item	Description	Qty.
1	19250-735	Yoshimura Tailpipe	1
2	19250MP720-RMA	Yoshimura Muffler Assembly	1
3	RACE-SPS-1	Medium Exhaust Spring	1
**	ST-200	Spring Puller Tool	1
**	17029	Sticker Sheet	1

** Not Shown on diagram.

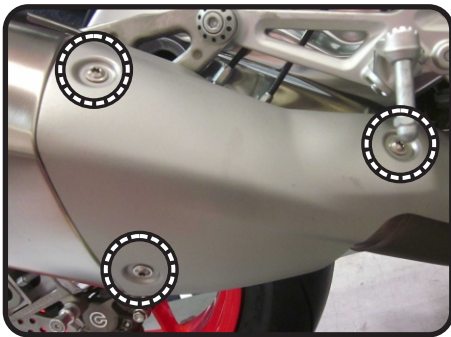
CAUTION: Exhaust system can be extremely hot. Let motorcycle cool down before beginning installation. Always wear hand and eye protection and take precautionary measures to avoid injury.

WARNING: Always properly support vehicle with a stand and/or lift when servicing or performing any work. Unstable vehicles may present dangerous conditions and may cause property damage and/or personal injury.

NOTE: Read through all instructions before beginning installation.

Removal

1. Remove muffler heatshield bolts and remove heatshield.



2. Loosen the muffler exhaust clamp.
3. While securely supporting the stock muffler assembly, remove muffler mount bolt.
4. Slightly rotate the stock muffler assembly to access exhaust valve cables. Loosen the exhaust valve cable lock nuts and remove exhaust valve cables from the muffler. Carefully remove the stock muffler assembly.

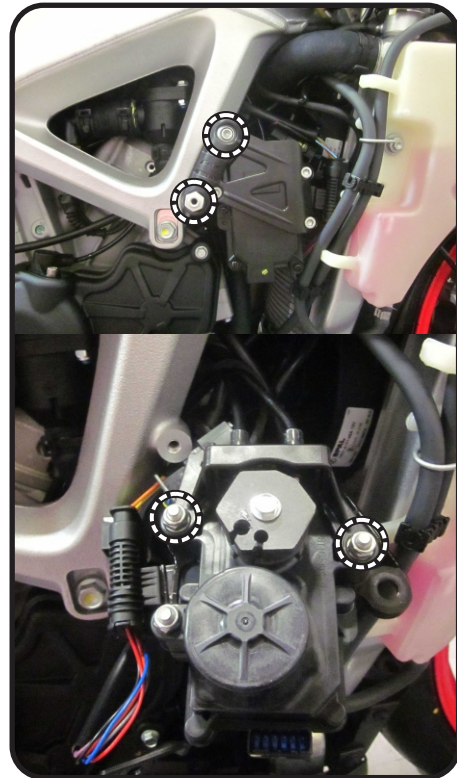
Note: The stock muffler exhaust clamp will be re-used with the Yoshimura slip-on.



5. Remove right side fairing to access exhaust valve motor. Follow owners manual for proper steps and procedure.
6. Locate exhaust valve motor and remove exhaust valve cables from pulley.

Note¹: The exhaust valve cable and pulley is not accessible as it is turned inward. Remove exhaust valve motor bracket bolts to access cables.

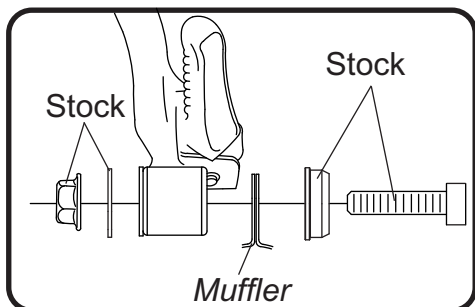
Note²: Exhaust valve cables will not be re-used. Carefully remove from vehicle.



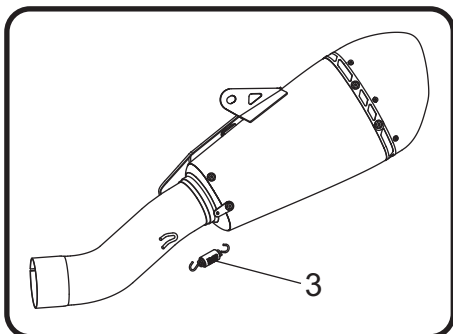
7. Re-install exhaust valve motor bracket following opposite steps of removal.
8. Re-install right side fairing following opposite steps of removal.

Installation

1. Slide the stock muffler exhaust clamp over (No. 1) 19250-735, tailpipe inlet.
2. Install (No. 1) 19250-735, tailpipe into (No. 2) 19250MP720-RMA, muffler inlet.
3. Install muffler/tailpipe assembly over the stock header outlet. Align muffler bracket to the front-side of muffler mount and secure using the stock bolt, washer, and nut. Torque to factory specification.



4. Torque muffler exhaust clamp to factory specification.
5. Install (No. 3) RACE-SPS-1, medium exhaust spring ST-200, spring puller tool supplied in the kit.



6. Before starting vehicle, check for proper clearance between new exhaust system and rear suspension (i.e. tire, swingarm, brakes, rear shock, and etc.) If any problem is found, please carefully follow through the installation steps again. If necessary, trim fairing for proper clearance between exhaust system and other components. If problem still persists, please call Yoshimura Tech Department at (800) 634-9166 / in CA (909) 628-4722.
7. It is recommended that the muffler and tailpipe be wiped down with rubbing alcohol to remove oil and fingerprints. This will help prevent tarnishing of the finish after the exhaust is heated up.

Works Finish Care & Maintenance

Before starting vehicle, clean pipe thoroughly using a soft cloth and rubbing alcohol to remove any oil and finger prints.

The color of the exhaust will change once the system has gone through a heat cycle of 15 minutes or more. Color will vary depending on lean/rich conditions.

Clean using a soft cloth and soap. Do not use abrasive materials as it will scratch the surface.

Surface reconditioning services are available to remove scratches and undesirable discoloration due to extreme heat. Contact Yoshimura Tech Department at (800) 634-9166 / in CA (909) 628-4722 for more information.

ADVISORY

**FOR CLOSED COURSE COMPETITION ONLY
NOT INTENDED FOR STREET USE**

The use of Aprilia "Race" ECU or equivalent fuel management is recommended for optimum performance.