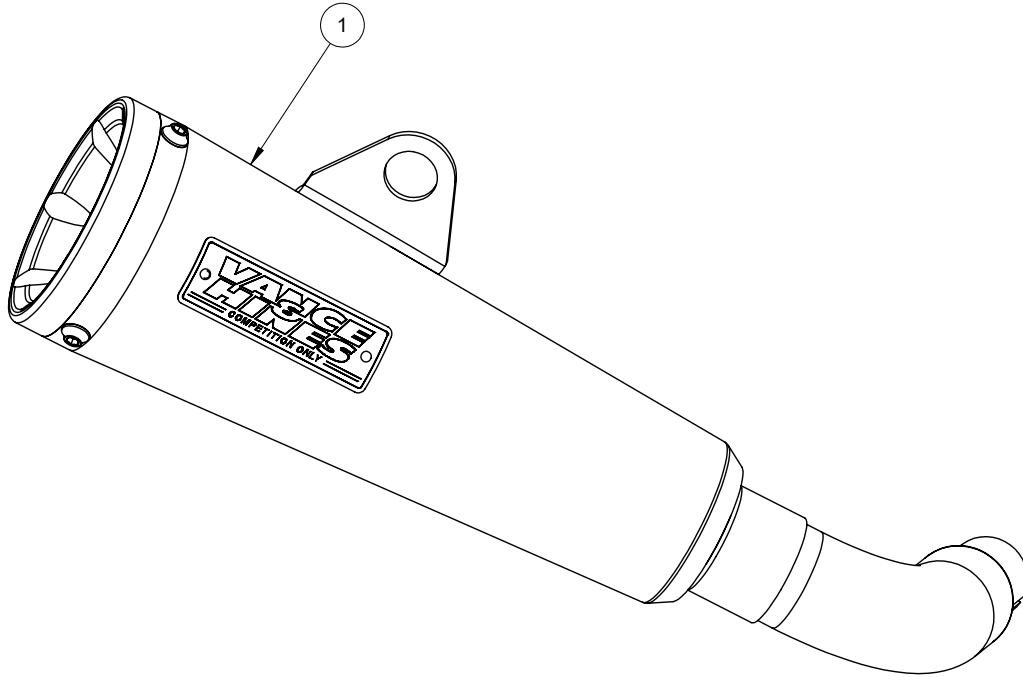


Congratulations, you have purchased the finest exhaust system available for your motorcycle. Your Vance & Hines exhaust is designed and crafted for performance, quality, and style. Please follow the instructions below, check exhaust system for missing or damaged parts and if you need any assistance please contact our technical support line (562) 921-7461.

Fits 2022 Honda Grom models

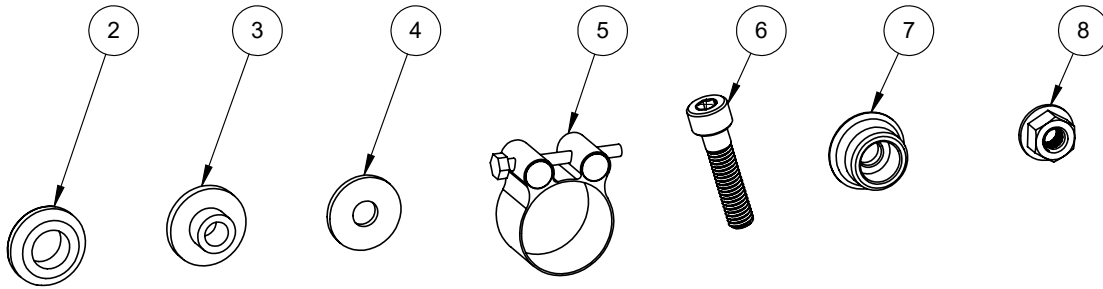
Qualified manufacturer declared replacement part for 2022 Honda Grom models.



## PARTS LIST

PART NO.	Description	Qty.	PART NO.	Description	Qty.		
1	H680RP-S	Muffler Assembly	1	7	A746ST-P	Front Spacer	1
2	A939HW	Rubber Grommet	1	8	A852HW	M8X1.25 Flange Nut	1
3	A790ST-P	Bracket Stand Off	1				
4	A942HW	M8 Washer	1				
5	A950HW	T-Bolt Clamp	1				
6	A209HW	M8X1.25X55mm SHCS	1				

## HARDWARE



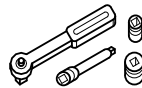
## TOOLS REQUIRED



Wrenches: 12mm



Allen Wrench: 6mm



Sockets: 8mm, 12mm

## STOCK SYSTEM REMOVAL

1. Loosen the stock exhaust clamp.
2. Remove the exhaust chassis mount bolt.
3. Remove the stock muffler from the head pipe.
4. Check that the stock muffler gasket has been completely removed from the end of the headpipe.

## VANCE & HINES SYSTEM INSTALLATION

1. Insert rubber grommet (A939HW) into the muffler bracket then install the stand off (A790ST-P) on the inside of the grommet (Figure 2).
2. Slip the T-bolt clamp (A950HW) onto the inlet of the muffler. NOTE: orient clamp so the fastener is to the rear of the bike and the head of the fastener is facing downwards (Figure 3).
3. Install the muffler to the headpipe then align the mounting bracket with the chassis bracket.
4. Fasten the muffler to the chassis bracket using the M8 Socket Head Screw (A209HW), Spacer (A746ST-P), M8 Washer (A942HW), and the M8 Flange Nut (A852HW) (Figure 4). Hand tighten only at this time.
5. Tighten the T-bolt clamp then tighten the muffler mounting bolt.

## VANCE & HINES SYSTEM INSTALLATION NOTES

1. When installing new muffler make sure your hands are clean and free of oil. After installation, thoroughly clean pipes and mufflers with a soft cloth and cleaning solution that will leave no residue (glass cleaner, alcohol, etc...) before starting the motorcycle.
2. High performance engine tuning utilizing a dyno will likely result in severe discoloration.
3. Avoid long periods of idling as this can cause discoloration. Intake leaks can cause the engine to run lean and overheat, this could also lead to discoloration.

**FIGURE 1**

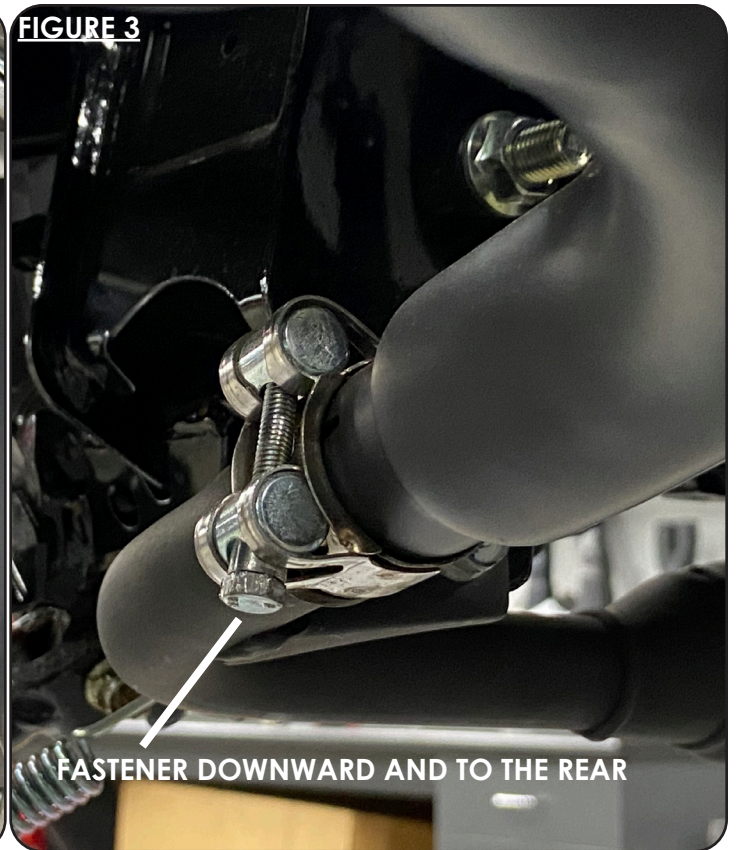




**FIGURE 2**



**FIGURE 3**



**FIGURE 4**



Emissions Notice:

In California, in order to meet Air Resources Board emissions requirements, certain aftermarket part applications have been identified as replacements, and others have received ARB Executive Orders. All other emissions related aftermarket parts are for competition use only. A list of replacement parts and EO parts, and corresponding fitment is provided at [vanceandhines.com/California](http://vanceandhines.com/California).

Warranty:

All Vance & Hines products are warranted against defects in material and workmanship for a period of 90 days. This warranty does not cover discoloration or rust. This warranty shall be limited to the repair or replacement of the product, which may be proven defective under normal use. Vance & Hines will not warranty any system that has been abused, misused, improperly installed or modified.

Dealers or distributors are not authorized to make dispositions binding upon Vance & Hines. Vance & Hines will not be responsible for any labor charges incurred in removing or replacing any system under warranty. A return authorization number and a copy of the original purchase invoice must accompany all returns. Parts returned without a return authorization may be refused.

13861 ROSECRANS AVENUE / SANTA FE SPRINGS, CA 90670  
SALES: (562) 921-5388  
TECHNICAL: (562) 926-5291  
FAX: (562) 802-0110

**vanceandhines**  
**.com**