



FITTING INSTRUCTIONS FOR RAD0283



THIS KIT CONTAINS THE ITEMS PICTURED AND LABELLED OVER PAGE.

SOME PARTS MAY BE SHOWN FOR CLARITY OF INSTRUCTIONS ONLY.

DO NOT PROCEED UNTIL YOU ARE SURE ALL PARTS ARE PRESENT.

PLEASE READ ALL INSTRUCTIONS BEFORE PROCEEDING.

**IF IN ANY DOUBT WHEN FITTING OUR PRODUCTS, CONSULT ONE OF OUR DEALERS
OR HAVE FITTED BY A QUALIFIED TECHNICIAN.**

PLEASE NOTE THAT THE WAY THE KIT IS PACKED DOES NOT NECESSARILY REPRESENT THE WAY OF
MOUNTING TO THE BIKE.

IN THE EVENT OF RUBBER WASHERS BEING USED TO HOLD COMPONENTS ONTO BOLTS,

THESE RUBBER WASHERS CAN BE THROWN AWAY.

DIGITAL COPIES OF THESE INSTRUCTIONS ARE AVAILABLE FROM:

WWW.RG-RACING.COM

R&G Racing

Unit 1, Shelley's Lane, East Worldham, Alton, Hampshire, GU34 3AQ

Tel: +44 (0)1420 89007 Fax: +44 (0)1420 87301 www.rg-racing.com Email: info@rg-racing.com



<u>TOOLS REQUIRED</u>	<u>GENERAL TORQUE SETTINGS</u>
<ul style="list-style-type: none"> • SET OF ALLEN KEYS. • NEEDLE NOSE PLIERS. • CABLE CUTTERS OR SCISSORS. <ul style="list-style-type: none"> • 10mm SOCKET 	M4 BOLT = 8Nm M5 BOLT = 12Nm M6 BOLT = 15Nm M8 BOLT = 20Nm M10 BOLT = 40Nm M12 BOLT = 40Nm

LEGEND

ITEM NO.	DESCRIPTION	QTY
ITEM 1	RAD GUARD UPPER (RAD0283 UPPER)	1
ITEM 2	RAD GUARD LOWER (RAD0283 LOWER)	1
ITEM 3	RSG0005 BUBBLE STICKERS	2
ITEM 4	RSG0002 SMALL STICKERS	2
ITEM 5	100mm SELF-ADHESIVE FOAM	6

FITTING PICTURES



Picture 1



Picture 2



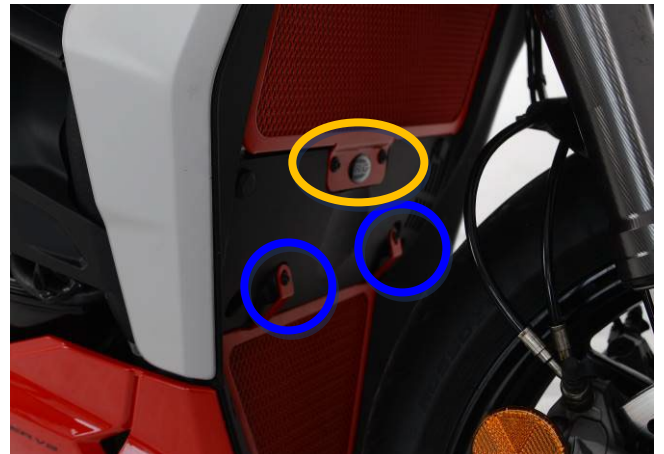
Picture 3



Picture 4



Picture 5



Picture 6

FITTING INSTRUCTIONS

- To fit the **UPPER** radiator guard to the bike cut 2 of the foam strips provided into 10mm wide pieces and stick them to the back of the radiator guard frame, so that they sit between the radiator guard and the radiator.
- Remove the two bolts that secure the access cover for the spark plug in place, as shown in **Pictures 1 & 3**.
- Take the R&G Radiator Guard and slide it in from the right side of the bike.
- Locate the tab on the edge of the radiator guard in the space between the radiator and plastic surround on the far side, before rotating upwards and locating the tab on the opposite side of the radiator guard in the same place on the other side. Whilst doing this, ensure the long tab on the top of the radiator guard locates between the radiator and plastic surrounding the headstock as shown in **Picture 5**.
- Align the radiator guard centrally and the mounting holes on the lower tab should locate where the plastic cover was removed from.
- Re-fit the original bolts inserting them through the radiator guard and into the metal clips on the plastic, as shown in the yellow circle in **Picture 6**.

R&G Racing

Unit 1, Shelley's Lane, East Worldham, Alton, Hampshire, GU34 3AQ

Tel: +44 (0)1420 89007 Fax: +44 (0)1420 87301 www.rg-racing.com Email: info@rg-racing.com



- To fit the **LOWER** radiator guard to the bike cut 2 of the foam strips provided into 10mm wide pieces and stick them to the back of the radiator guard frame, so that they sit between the radiator guard and the radiator.
- Remove the two bolts as shown in **Picture 2**.
- Offer the R&G Radiator Guard up to the bike and slide the tab on the bottom edge of the radiator guard down between the radiator and plastic surround, as shown in **Picture 4**. *This should locate within the same slot as the radiator.*
- Slide fully down and the top of the radiator guard should sit against the radiator, with the two tabs for the top mounting aligning with the two mounting points. Re-fit the original bolts through the radiator guard holes and into two threaded bosses within the plastic surround as shown in the blue circles in **Picture 6**.
- Ensure the radiator guard is correctly mounted and secure before riding.

See more R&G products for your Motorcycle in the link below:

[R&G Racing | All Products for Ducati - Streetfighter V2 \(rg-racing.com\)](http://www.rg-racing.com)

ISSUE 1 - 07/11/2022 (MH)

CONSUMER NOTICE

The catalogue description and any exhibition of samples are only broad indications of the Products and R&G may make design changes which do not diminish their performance or visual appeal and supplying them in such state shall conform to the order. The Buyer acknowledges no representation or warranty (other than as to title) has been given or will apply to the Products other than those in R&G's order or confirmation and the Buyer confirms it has chosen the Products as being of merchantable quality and suitable for its particular purposes. Where R&G fits the Products or undertakes other services it shall exercise reasonable skill and care and rectify any fault free of charge unless the workmanship has been disturbed. The Buyer is responsible for ensuring that the warranty on the motorcycle is not affected by the fitting of the Products. On return of any defective Products R&G shall at its option either supply a replacement or refund the purchase money but shall not be liable if the Products have been modified or used or maintained otherwise than in accordance with R&G's or manufacturer's instructions and good engineering practice or if the defect arises from accident or neglect. Other than identified above and subject to R&G not limiting its liability for causing death and personal injury, it shall not be liable for indirect or consequential loss and otherwise its liability shall be limited to the amounts paid by the Buyer for the Products or the fitting or service concerned. These terms do not affect the Buyer's statutory rights.

R&G RACING RETURNS POLICY (NON-FAULTY GOODS)

Returns must be pre-authorized (if not pre-authorized the return will be rejected). Goods may only be returned direct to us if they were purchased direct from us (customer must prove if necessary). Otherwise to be returned to original vendor. Goods must be in re-sellable condition, in the opinion of R&G Racing. All returns are subject to a 25% restocking and handling fee (25% of the gross value exc. P&P - at the prevailing price at time of purchase). The customer must pay any and all carriage charges. No returns of discontinued products, unless within 14 days of purchase. This policy does not affect your statutory rights and does not refer to faulty goods.

R&G Racing

Unit 1, Shelley's Lane, East Worldham, Alton, Hampshire, GU34 3AQ

Tel: +44 (0)1420 89007 Fax: +44 (0)1420 87301 www.rg-racing.com Email: info@rg-racing.com



NOTICE DE MONTAGE POUR RAD0283



CE KIT CONTIENT LES ARTICLES ILLUSTRÉS ET ÉTIQUETES SUR LA PAGE.

CERTAINES PARTIES PEUVENT ÊTRE PRÉSENTES UNIQUEMENT POUR LA CLARTE DES INSTRUCTIONS.

NE PAS PROCÉDER AU MONTAGE TANT QUE VOUS N'ÊTES PAS SÛR QUE TOUTES LES PIÈCES SOIENT PRÉSENTES.

VEUILLEZ LIRE TOUTES LES INSTRUCTIONS AVANT DE CONTINUER.

EN CAS DE DOUTE LORS DU MONTAGE DE NOS PRODUITS, CONSULTEZ UN DE NOS REVENDEURS OU FAITES APPEL À UN TECHNICIEN QUALIFIÉ.

VEUILLEZ NOTER QUE LA FAÇON DONT LE KIT EST EMBALLÉ NE REPRÉSENTE PAS NECESSAIREMENT LA MANIÈRE DE LE MONTER SUR LA MOTO.

SI DES RONDELLES EN CAOUTCHOUC SONT UTILISÉES POUR MAINTENIR LES COMPOSANTS SUR LES BOULONS, ELLES PEUVENT ÊTRE JETÉES.

NOTICE DISPONIBLE AU TÉLÉCHARGEMENT SUR :

WWW.RG-RACING.COM

R&G Racing

Unit 1, Shelley's Lane, East Worldham, Alton, Hampshire, GU34 3AQ

Tel: +44 (0)1420 89007 Fax: +44 (0)1420 87301 www.rg-racing.com Email: info@rg-racing.com



<u>OUTILS REQUIS</u>	<u>VALEURS DE SERRAGE</u>
<ul style="list-style-type: none"> • CLÉS ALLEN. • PINCE À BEC POINTU. • PINCE COUPANTE. • CLÉ À MOLETTE 10mm 	<p>M4 BOULON = 8Nm</p> <p>M5 BOULON = 12Nm</p> <p>M6 BOULON = 15Nm</p> <p>M8 BOULON = 20Nm</p> <p>M10 BOULON = 40Nm</p> <p>M12 BOULON = 40Nm</p>

LÉGENDE

ARTICLE NO.	DESCRIPTION	QTÉ
ARTICLE 1	GRILLE DE PROTECTION RADIATEUR SUPÉRIEURE (RAD0283 UPPER)	1
ARTICLE 2	GRILLE DE PROTECTION RADIATEUR INFÉRIEURE (RAD0283 LOWER)	1
ARTICLE 3	RSG0005 STICKERS EN CAOUTCHOUC	2
ARTICLE 4	RSG0002 PETITS STICKERS	2
ARTICLE 5	100mm BANDEAU DE MOUSSE ADHÉSIF	6

PHOTOS DE MONTAGE



Photo 1

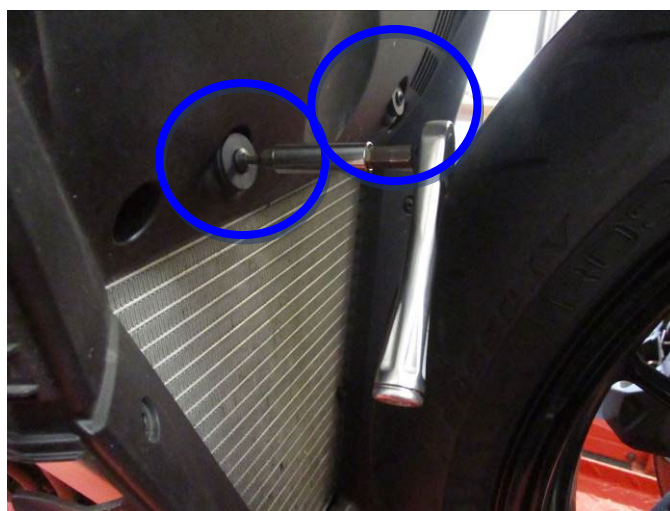


Photo 2



Photo 3



Photo 4



Photo 5



Photo 6

NOTICE DE MONTAGE

- Pour installer la grille de protection radiateur SUPÉRIEURE sur la moto, coupez 2 des bandes de mousse fournies en morceaux de 10 mm de large et collez-les à l'arrière du cadre de la grille de protection, de sorte qu'ils se trouvent entre la grille de protection et le radiateur.
- Retirez les deux boulons qui fixent le couvercle d'accès à la bougie en place, comme indiqué sur les photos 1 et 3.
- Prenez la grille de protection radiateur R&G et faites-la glisser depuis le côté droit de la moto.
- Localisez la languette sur le bord de la grille de protection radiateur dans l'espace entre le radiateur et le contour en plastique de l'autre côté, avant de tourner vers le haut et de placer la languette sur le côté opposé de la grille de protection radiateur au même endroit de l'autre côté. Tout en faisant cela, assurez-vous que la longue languette sur le dessus de la protection du radiateur se situe entre le radiateur et le plastique entourant la poupée, comme indiqué sur la photo 5.
- Alignez la grille de protection radiateur au centre et les trous de montage sur la languette inférieure doivent se placer à l'endroit où le couvercle en plastique a été retiré.
- Remontez les boulons d'origine en les insérant à travers la grille de protection radiateur et dans les clips métalliques sur le plastique, comme indiqué dans le cercle jaune sur la Photo 6.

R&G Racing

Unit 1, Shelley's Lane, East Worldham, Alton, Hampshire, GU34 3AQ

Tel: +44 (0)1420 89007 Fax: +44 (0)1420 87301 www.rg-racing.com Email: info@rg-racing.com



- Pour installer la grille de protection radiateur INFÉRIEURE sur la moto, coupez 2 des bandes de mousse fournies en morceaux de 10 mm de large et collez-les à l'arrière du cadre de grille de protection, de manière à ce qu'elles se trouvent entre la grille de protection et le radiateur.
- Retirez les deux boulons comme indiqué sur la Photo 2.
- Présentez la grille de protection radiateur R&G sur la moto et faites glisser la languette sur le bord inférieur de la grille de protection radiateur vers le bas entre le radiateur et le contour en plastique, comme illustré sur la photo 4. Celui-ci doit se situer dans la même fente que le radiateur.
- Faites glisser complètement vers le bas et le haut de la grille de protection du radiateur doit reposer contre le radiateur, avec les deux languettes pour le montage supérieur alignées avec les deux points de montage. Remontez les boulons d'origine à travers les trous de protection du radiateur et dans deux bossages filetés à l'intérieur de l'entourage en plastique, comme indiqué dans les cercles bleus de la photo 6.
- Assurez-vous que la grille de protection radiateur soit correctement montée et sécurisée avant de rouler.

Voir plus de produits R&G pour votre moto via ce lien :

[R&G Racing | All Products for Ducati - Streetfighter V2 \(rg-racing.com\)](http://www.rg-racing.com)

ISSUE 1 – 07/11/2022 (MH)

CONSUMER NOTICE

The catalogue description and any exhibition of samples are only broad indications of the Products and R&G may make design changes which do not diminish their performance or visual appeal and supplying them in such state shall conform to the order. The Buyer acknowledges no representation or warranty (other than as to title) has been given or will apply to the Products other than those in R&G's order or confirmation and the Buyer confirms it has chosen the Products as being of merchantable quality and suitable for its particular purposes. Where R&G fits the Products or undertakes other services it shall exercise reasonable skill and care and rectify any fault free of charge unless the workmanship has been disturbed. The Buyer is responsible for ensuring that the warranty on the motorcycle is not affected by the fitting of the Products. On return of any defective Products R&G shall at its option either supply a replacement or refund the purchase money but shall not be liable if the Products have been modified or used or maintained otherwise than in accordance with R&G's or manufacturer's instructions and good engineering practice or if the defect arises from accident or neglect. Other than identified above and subject to R&G not limiting its liability for causing death and personal injury, it shall not be liable for indirect or consequential loss and otherwise its liability shall be limited to the amounts paid by the Buyer for the Products or the fitting or service concerned. These terms do not affect the Buyer's statutory rights.

R&G RACING RETURNS POLICY (NON-FAULTY GOODS)

Returns must be pre-authorized (if not pre-authorized the return will be rejected). Goods may only be returned direct to us if they were purchased direct from us (customer must prove if necessary). Otherwise to be returned to original vendor. Goods must be in re-sellable condition, in the opinion of R&G Racing. All returns are subject to a 25% restocking and handling fee (25% of the gross value exc. P&P – at the prevailing price at time of purchase). The customer must pay any and all carriage charges. No returns of discontinued products, unless within 14 days of purchase. This policy does not affect your statutory rights and does not refer to faulty goods.

R&G Racing

Unit 1, Shelley's Lane, East Worldham, Alton, Hampshire, GU34 3AQ

Tel: +44 (0)1420 89007 Fax: +44 (0)1420 87301 www.rg-racing.com Email: info@rg-racing.com



MONTAGEANLEITUNG FÜR RAD0283



ALLE KIT-TEILE SIND AUF DEN NACHFOLGENDEN SEITEN ABGEBILDET UND GEKENNZEICHNET.

DIE ABGEBILDETEN TEILE DIENEN LEDIGLICH ZUR ERKLÄRUNG.

ÜBERPRÜFEN SIE ZUERST, DASS ALLE TEILE VORHANDEN SIND.

LESEN SIE DIE MONTAGEANLEITUNG KOMPLETT DURCH, BEVOR SIE ANFANGEN.

WENN SIE BEI DER MONTAGE DIESES PRODUKTES UNSICHER SIND, BITTE EINEN UNSERER HÄNDLER KONTAKTIEREN ODER DAS KIT VON EINEM QUALIFIZIERTEN ZWEIRAD-MECHANIKER MONTIEREN LASSEN.

DIE VERPACKUNG DER TEILE STELLT NICHT DIE REIHENFOLGE DER MONTAGE DAR.

HINWEIS FÜR KITS MIT PLASTIKUNTERLEGSCHLEIBEN AN DEN SCHRAUBEN –
DIESE PLASTIK-UNTERLEGSCHLEIBEN WERDEN NICHT FÜR DEN EINBAU BENÖTIGT.

EINE DIGITALE VERSION DIESER MONTAGEANLEITUNG KANN AUF FOLGENDER SEITE HERUNTERGELADEN WERDEN:

[WWW.RG-RACING.COM](http://www.rg-racing.com)

R&G Racing

Unit 1, Shelley's Lane, East Worldham, Alton, Hampshire, GU34 3AQ

Tel: +44 (0)1420 89007 Fax: +44 (0)1420 87301 www.rg-racing.com Email: info@rg-racing.com

**SIE BENÖTIGEN FOLGENDES WERKZEUG**

- SATZ INBUSSCHLÜSSEL
 - SPITZZANGE
- SEITENSCHNEIDER ODER SCHERE
 - 10mm STECKSCHLÜSSEL

ALLGEM. ANZUGSDREHMOMENT:

M4 SCHRAUBE = 8Nm
 M5 SCHRAUBE = 12Nm
 M6 SCHRAUBE = 15Nm
 M8 SCHRAUBE = 20Nm
 M10 SCHRAUBE = 40Nm
 M12 SCHRAUBE = 40Nm

LIEFERUMFANG

ARTIKEL NR.	BESCHREIBUNG	MENGE
ARTIKEL 1	RAD KÜHLERSCHUTZ OBEN (RAD0283 OBEN)	1
ARTIKEL 2	RAD KÜHLERSCHUTZ UNTEN (RAD0283 UNTEN)	1
ARTIKEL 3	RSG0005 BUBBLE-AUFKLEBER	2
ARTIKEL 4	RSG0002 KLEINER AUFKLEBER	2
ARTIKEL 5	100mm SELBSTKLEBENDER SCHAUMSTOFF	6

MONTAGE ABBILDUNGEN

Abbildung 1



Abbildung 2

R&G Racing

Unit 1, Shelley's Lane, East Worldham, Alton, Hampshire, GU34 3AQ

Tel: +44 (0)1420 89007 Fax: +44 (0)1420 87301 www.rg-racing.com Email: info@rg-racing.com



Abbildung 3



Abbildung 4



Abbildung 5

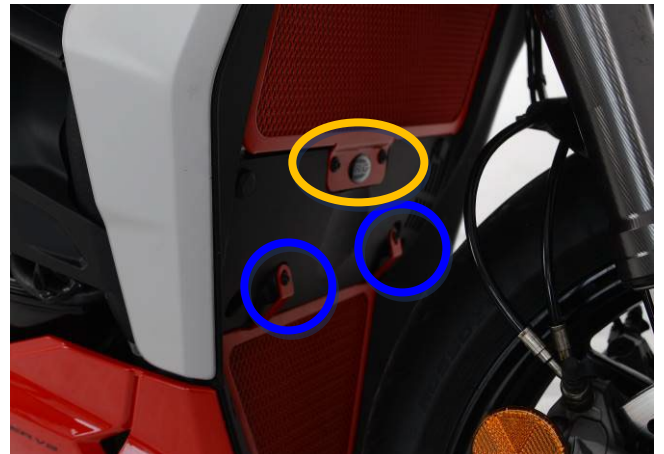


Abbildung 6

MONTAGEANLEITUNG

- Um den **OBEREN** Kühlerschutz am Motorrad zu montieren, schneiden Sie zuerst 2 Schaumstoff-Streifen vom Kit in 10 mm breite Streifen und kleben Sie diese auf der Rückseite des Kühlerschutzrahmens, so dass sie zwischen dem Kühlerschutz und dem Kühler angebracht sind.
- Entfernen Sie die zwei Schrauben, die die Abdeckung für die Zündkerze in Position befestigen wie in den **Abbildungen 1 & 3** abgebildet.
- Nehmen Sie den R&G Kühlerschutz und schieben Sie ihn von der rechten Seite des Motorrades beginnend auf das Motorrad.
- Die Lasche an der Kante des Kühlerschutzes in die Lücke zwischen dem Kühler und der Kunststoffummantelung an der abgewandten Seite positionieren, bevor Sie sie nach oben drehen und die Lasche auf der anderen Seite des Kühlerschutzes an der gleichen Stelle an der anderen Seite positionieren. Stellen Sie dabei sicher, dass die lange Lasche oben auf dem Kühlerschutz zwischen dem Kühler und der Kunststoffummantelung am Spindelstock positioniert ist – siehe **Abbildung 5**.
- Den Kühlerschutz mittig ausrichten, sodass die Montageöffnungen an der unteren Lasche an der Stelle positioniert sind, wo zuvor die Kunststoffabdeckung entfernt wurde.

R&G Racing

Unit 1, Shelley's Lane, East Worldham, Alton, Hampshire, GU34 3AQ

Tel: +44 (0)1420 89007 Fax: +44 (0)1420 87301 www.rg-racing.com Email: info@rg-racing.com



- Montieren Sie die Originalschrauben wieder – setzen Sie diese zuerst in den Kühlerschutz und dann in die Metallclips am Kunststoff ein (in **Abbildung 6** mit einem gelben Kreis gekennzeichnet).
- Um den **UNTEREN** Kühlerschutz am Motorrad zu montieren, schneiden Sie die 2 Schaumstoff-Streifen vom Kit in 10 mm breite Streifen und kleben Sie diese auf der Rückseite des Kühlerschutzrahmens, so dass sie zwischen dem Kühlerschutz und dem Kühler angebracht sind.
- Entfernen Sie die zwei Schrauben, die in **Abbildung 2** abgebildet sind.
- Den R&G Kühlerschutz ans Motorrad ansetzen und die Lasche an der unteren Kante des Kühlerschutzes nach unten zwischen dem Kühler und der Kunststoffummantelung einsetzen wie in **Abbildung 4** abgebildet. *Dies sollte in den gleichen Schlitz passen wie der Kühler.*
- Komplette nach unten schieben, sodass der obere Teil des Kühlerschutzes am Kühler anliegt – die zwei Laschen für die Montage oben sollten mit den zwei Montagepunkten ausgerichtet sein. Die Originalschrauben durch die Öffnungen am Kühlerschutz in die zwei Gewindeaufnahmen innerhalb der Kunststoffummantelung wie in **Abbildung 6** (mit blauen Kreisen markiert) abgebildet.
- Überprüfen Sie, dass der Kühlerschutz ordnungsgemäß montiert und befestigt ist, bevor Sie mit dem Motorrad fahren.

Klicken Sie hier, um weitere R&G Produkte für Ihr Motorrad zu finden:

[R&G Racing | All Products for Ducati - Streetfighter V2 \(rg-racing.com\)](http://rg-racing.com)

AUSGABE 1 – 07/11/2022 (MH)

CONSUMER NOTICE

The catalogue description and any exhibition of samples are only broad indications of the Products and R&G may make design changes which do not diminish their performance or visual appeal and supplying them in such state shall conform to the order. The Buyer acknowledges no representation or warranty (other than as to title) has been given or will apply to the Products other than those in R&G's order or confirmation and the Buyer confirms it has chosen the Products as being of merchantable quality and suitable for its particular purposes. Where R&G fits the Products or undertakes other services it shall exercise reasonable skill and care and rectify any fault free of charge unless the workmanship has been disturbed. The Buyer is responsible for ensuring that the warranty on the motorcycle is not affected by the fitting of the Products. On return of any defective Products R&G shall at its option either supply a replacement or refund the purchase money but shall not be liable if the Products have been modified or used or maintained otherwise than in accordance with R&G's or manufacturer's instructions and good engineering practice or if the defect arises from accident or neglect. Other than identified above and subject to R&G not limiting its liability for causing death and personal injury, it shall not be liable for indirect or consequential loss and otherwise its liability shall be limited to the amounts paid by the Buyer for the Products or the fitting or service concerned. These terms do not affect the Buyer's statutory rights.

R&G RACING RETURNS POLICY (NON-FAULTY GOODS)

Returns must be pre-authorized (if not pre-authorized the return will be rejected). Goods may only be returned direct to us if they were purchased direct from us (customer must prove if necessary). Otherwise to be returned to original vendor. Goods must be in re-sellable condition, in the opinion of R&G Racing. All returns are subject to a 25% restocking and handling fee (25% of the gross value exc. P&P – at the prevailing price at time of purchase). The customer must pay any and all carriage charges. No returns of discontinued products, unless within 14 days of purchase. This policy does not affect your statutory rights and does not refer to faulty goods.

R&G Racing

Unit 1, Shelley's Lane, East Worldham, Alton, Hampshire, GU34 3AQ

Tel: +44 (0)1420 89007 Fax: +44 (0)1420 87301 www.rg-racing.com Email: info@rg-racing.com