



**FITTING INSTRUCTIONS FOR RAD0223 RADIATOR GUARD**  
**SUZUKI GSX 250R 2017**



**THIS KIT CONTAINS THE ITEMS PICTURED AND LABELLED BELOW.**  
**DO NOT PROCEED UNTIL YOU ARE SURE ALL PARTS ARE PRESENT.**

Please note that the way the kit is packed does not necessarily represent the way of mounting to the bike

Please note that in cases where kits are packed with rubber washers holding the components onto the bolt – *the rubber washers should be thrown away!*

THE PARTS SHOWN MAY BE REPRESENTATIVE ONLY (FOR CLARITY OF INSTRUCTIONS ONLY)

Digital copies of these instructions are available to download from [www.rg-racing.com](http://www.rg-racing.com)

**GENERAL TORQUE SETTINGS**

M4 BOLT = 8Nm  
M5 BOLT = 12Nm  
M6 BOLT = 15Nm

**TOOLS REQUIRED**

- Metric Allen keys set to include 4mm, 5mm & 6mm
  - Phillips Screwdriver

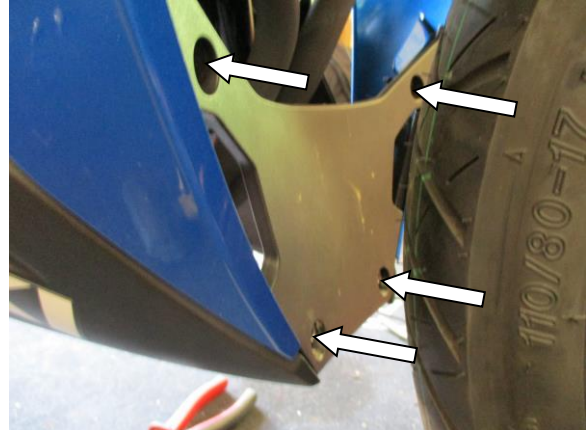
**In This Kit There Should Be**

- 1 x Radiator Guard (RAD0223).
- 2 x 100mm Lengths of self-adhesive Foam.

**R&G Racing**



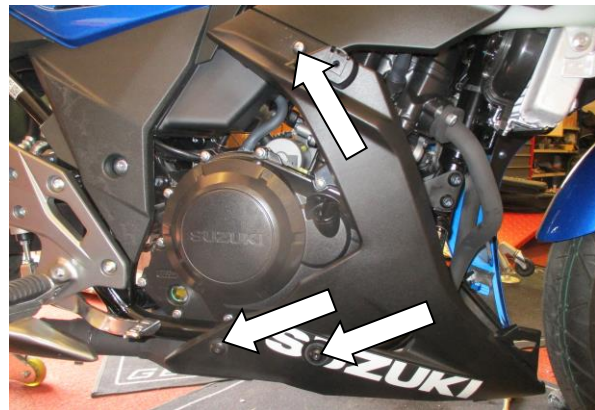
Picture 1



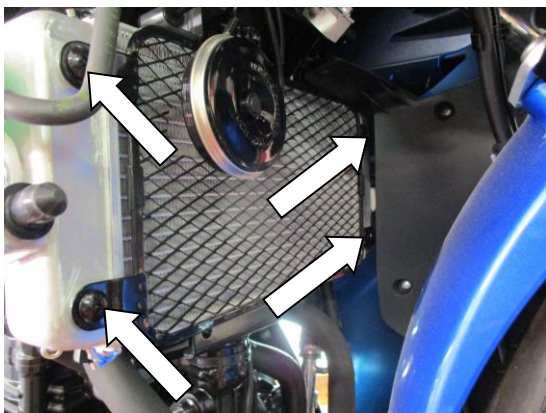
Picture 2



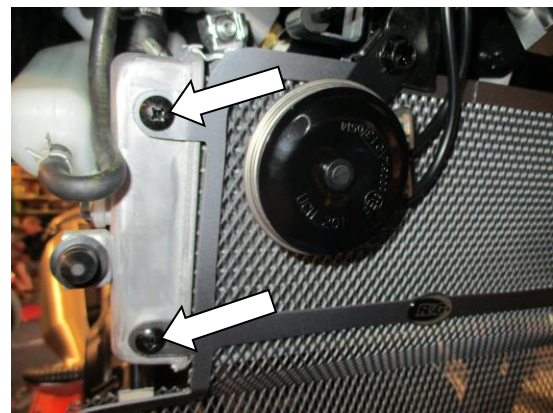
Picture 3



Picture 4

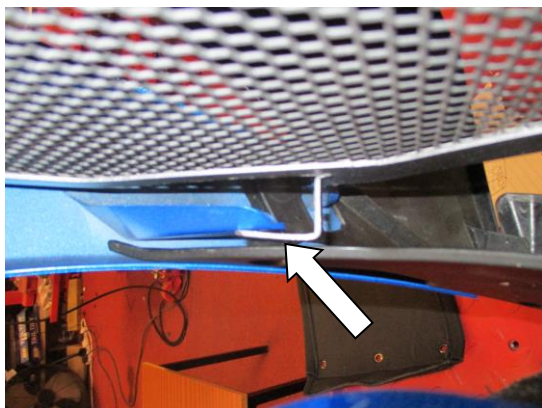


Picture 5



Picture 6

**R&G Racing**



Picture 7

### FITTING INSTRUCTIONS

- To fit the radiator guard to the bike, cut the foam strip provided into 10mm wide pieces and stick them to the back of the radiator guard frame, so that they sit between the radiator guard and the radiator.
- Starting from the right hand side (as you sit on the bike), Remove the bolt arrowed in Picture 1.
- Remove the two screws and two push-in pins arrowed in Picture 2. Remove the lower triangular panel.
- Remove the screw arrowed in picture 3. Gently slide the mid side panel forward and remove from the bike.
- Remove the three bolts arrowed in picture 4. Gently remove the lower side panel from the bike.
- Repeat the procedures to the left hand side fairing panels.
- Remove the four bolts that secure the OEM radiator guard in place as arrowed in Picture 5. Set the bolts aside as they are to be re-used at later stage.
- Offer the new R&G radiator guard in position by aligning the four mounting points to the radiator as original (Shown in Picture 6). Secure the radiator guard using the four bolts removed earlier and tighten to a maximum of 15Nm.
- Refit both sides fairings as original. Locate the two lower mounts of the radiator guard in front of the the mid side panel's lower mounts.
- Offer the lower triangular panel in position as original in front of the radiator guard lower mounts as shown in picture 7. Ensure that the radiator lower mounts are sandwiched between the two panels.
- Secure the lower panel in position using the push-in pins and screws removed earlier.

ISSUE 1 05/09/2017 (HH)

### **CONSUMER NOTICE**

The catalogue description and any exhibition of samples are only broad indications of the Products and R&G may make design changes which do not diminish their performance or visual appeal and supplying them in such state shall conform to the order. The Buyer acknowledges no representation or warranty (other than as to title) has been given or will apply to the Products other than those in R&G's order or confirmation and the Buyer confirms it has chosen the Products as being of merchantable quality and suitable for its particular purposes. Where R&G fits the Products or undertakes other services it shall exercise reasonable skill and care and rectify any fault free of charge unless the workmanship has been disturbed. The Buyer is responsible for ensuring that the warranty on the motorcycle is not affected by the fitting of the Products. On return of any defective Products R&G shall at its option either supply a replacement or refund the purchase money but shall not be liable if the Products have been modified or used or maintained otherwise than in accordance with R&G's or manufacturer's instructions and good engineering practice or if the defect arises from accident or neglect. Other than identified above and subject to R&G not limiting its liability for causing death and personal injury, it shall not be liable for indirect or consequential loss and otherwise its liability shall be limited to the amounts paid by the Buyer for the Products or the fitting or service concerned. These terms do not affect the Buyer's statutory rights.

### **R&G Racing**

Unit 1 Shelleys Lane, East Worldham, Alton, Hants GU34 3AQ

Tel: +44 (0)1420 89007 Fax: +44 (0)1420 87301 [www.rg-racing.com](http://www.rg-racing.com) Email: [info@rg-racing.com](mailto:info@rg-racing.com)



**R&G RACING RETURNS POLICY (NON-FAULTY GOODS)**

Returns must be pre-authorized (if not pre-authorized the return will be rejected). Goods may only be returned direct to us if they were purchased direct from us (customer must prove if necessary). Otherwise to be returned to original vendor. Goods must be in re-sellable condition, in the opinion of R&G Racing. All returns are subject to a 25% restocking and handling fee (25% of the gross value exc. P&P – at the prevailing price at time of purchase). The customer must pay any and all carriage charges. No returns of discontinued products, unless within 14 days of purchase. This policy does not affect your statutory rights and does not refer to faulty goods.



**NOTICE DE MONTAGE POUR RAD0223**  
**GRILLE DE PROTECTION RADIATEUR**  
**SUZUKI GSX 250R 2017**



**Le kit contient les articles exposés ci-dessous, vérifier que toutes les pièces soient présentes avant de procéder au montage.**

**La façon dont le kit est emballé ne correspond pas forcément à la façon de monter les pièces sur la moto**

Notez que si les kits sont emballés avec des rondelles en caoutchouc servant à tenir les composants, *ces rondelles doivent être jetées !*

LES PARTIES PRESENTEES PEUVENT ETRE UNIQUEMENT REPRESENTATIVES (POUR LA CLARTE DES INSTRUCTIONS UNIQUEMENT)

**Notice disponible au téléchargement sur [www.rg-racing.com](http://www.rg-racing.com)**

**VALEURS DE SERRAGE RECOMMANDEES :**

M4 BOULON = 8NM  
M5 BOULON = 12NM  
M6 BOULON = 15NM

**OUTILS REQUIS**

- Clés Allen 4mm, 5mm & 6mm
- Tournevis cruciforme

**Le kit doit contenir:**

- 1 x Grille de protection radiateur (RAD0223).
- 2 x 100mm Longueurs de mousse autocollante.



Photo 1

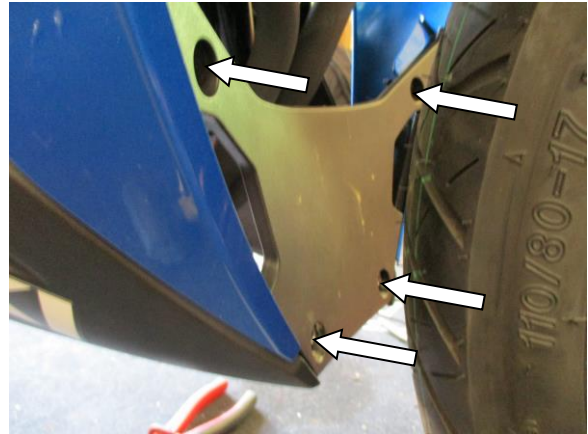


Photo 2



Photo 3

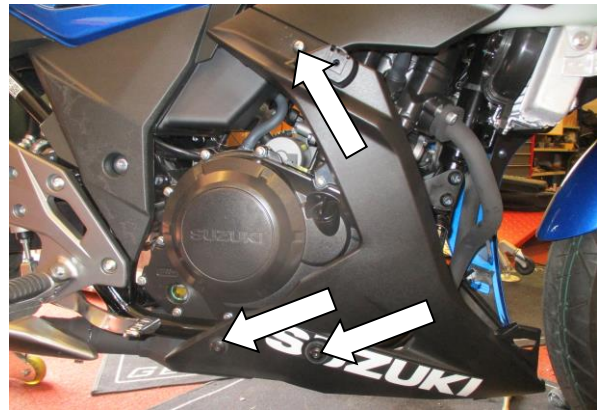


Photo 4

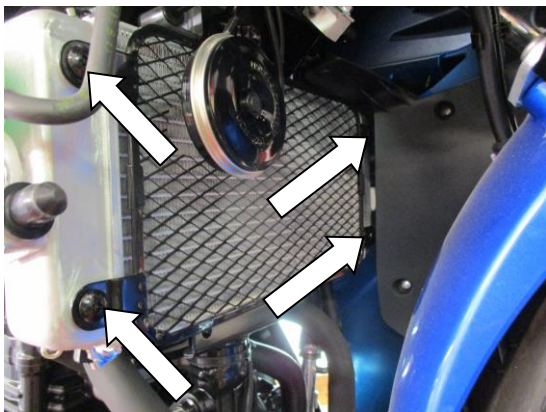


Photo 5

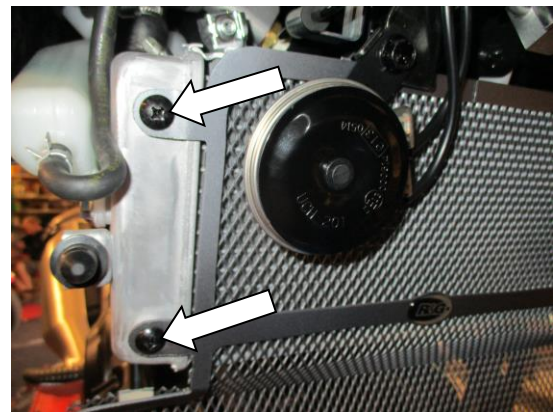


Photo 6

**R&G Racing**



Photo 7

## **NOTICE DE MONTAGE**

- Couper le bandeau de mousse fourni en pièces de 10mm puis collez-les au bas du cadre de protection radiateur, de façon à ce qu'elles se placent entre la protection radiateur et le radiateur.
- En partant du côté droit (Lorsqu'on est assis sur la moto), enlever le boulon indiqué sur la Photo 1.
- Enlever les 2 vis et 2 broches indiquées sur la Photo 2. Enlever le panneau triangulaire inférieur.
- Enlever la vis indiquée sur la photo 3. Glisser le panneau latéral du milieu vers l'avant et enlevez le de la moto.
- Enlever les 3 boulons indiqués sur la photo 4. Enlever le panneau latéral inférieur de la moto.
- Répéter les procédures pour les panneaux de carénage du côté gauche.
- Enlever les 4 boulons qui fixent la grille de protection radiateur en place, voir Photo 5. Mettre les boulons de côté, ils seront réutilisés plus tard.
- Monter la nouvelle grille de protection radiateur R&G en position en alignant les 4 points de fixation sur le radiateur comme à l'origine (voir Photo 6). Fixer la grille de protection radiateur en utilisant les 4 boulons enlevés plus tôt puis serrer à maximum 15Nm.
- Remonter les carénages des 2 côtés comme à l'origine. Placer les 2 supports inférieurs de la grille de protection radiateur devant les supports inférieurs de panneaux latéraux du milieu.
- Monter le panneau triangulaire inférieur en position comme à l'origine devant les supports inférieurs de grille de protection radiateur, voir photo 7. Veiller à ce que les supports inférieurs de radiateur soient prise en sandwich entre les 2 panneaux.
- Fixer le panneau inférieur en position en utilisant les broches et vis enlevées plus tôt.

ISSUE 1 05/09/2017 (HH)

### **CONSUMER NOTICE**

The catalogue description and any exhibition of samples are only broad indications of the Products and R&G may make design changes which do not diminish their performance or visual appeal and supplying them in such state shall conform to the order. The Buyer acknowledges no representation or warranty (other than as to title) has been given or will apply to the Products other than those in R&G's order or confirmation and the Buyer confirms it has chosen the Products as being of merchantable quality and suitable for its particular purposes. Where R&G fits the Products or undertakes other services it shall exercise reasonable skill and care and rectify any fault free of charge unless the workmanship has been disturbed. The Buyer is responsible for ensuring that the warranty on the motorcycle is not affected by the fitting of the Products. On return of any defective Products R&G shall at its option either supply a replacement or refund the purchase money but shall not be liable if the Products have been modified or used or maintained otherwise than in accordance with R&G's or manufacturer's instructions and good engineering practice or if the defect arises from accident or neglect. Other than identified above and subject to R&G not limiting its liability for causing death and personal injury, it shall not be liable for indirect or consequential loss and otherwise its liability shall be limited to the amounts paid by the Buyer for the Products or the fitting or service concerned. These terms do not affect the Buyer's statutory rights.

### **R&G Racing**

Unit 1 Shelleys Lane, East Worldham, Alton, Hants GU34 3AQ

Tel: +44 (0)1420 89007 Fax: +44 (0)1420 87301 [www.rg-racing.com](http://www.rg-racing.com) Email: [info@rg-racing.com](mailto:info@rg-racing.com)



**R&G RACING RETURNS POLICY (NON-FAULTY GOODS)**

Returns must be pre-authorized (if not pre-authorized the return will be rejected). Goods may only be returned direct to us if they were purchased direct from us (customer must prove if necessary). Otherwise to be returned to original vendor. Goods must be in re-sellable condition, in the opinion of R&G Racing. All returns are subject to a 25% restocking and handling fee (25% of the gross value exc. P&P – at the prevailing price at time of purchase). The customer must pay any and all carriage charges. No returns of discontinued products, unless within 14 days of purchase. This policy does not affect your statutory rights and does not refer to faulty goods.