



FITTING INSTRUCTIONS FOR LP0382BK LICENCE PLATE BRACKET



**This kit contains the items pictured and labelled over page.
Some parts may be shown for clarity of instructions only.
Do not proceed until you are sure all parts are present.
Please read all instructions before proceeding.**

**IF IN ANY DOUBT WHEN FITTING OUR PRODUCTS, CONSULT ONE OF OUR DEALERS
OR HAVE FITTED BY A QUALIFIED TECHNICIAN.**

Please note that the way the kit is packed does not necessarily represent the way of mounting to the bike.

In the event of rubber washers being used to hold components onto bolts, these rubber washers can be thrown away.



<u>TOOLS REQUIRED</u>	<u>GENERAL TORQUE SETTINGS</u>
<ul style="list-style-type: none"> • Set of metric Hex keys to include 3mm, 4mm and 5mm. • Set of metric sockets and wrench. To include 6, 8 & 10mm. <ul style="list-style-type: none"> • 8mm & 10mm spanners. • Phillips screwdriver. 	M4 BOLT = 8Nm M5 BOLT = 12Nm M6 BOLT = 15Nm M8 BOLT = 20Nm M10 BOLT = 40Nm M12 BOLT = 40Nm

LEGEND

ITEM No.	DESCRIPTION	QTY
ITEM 1	MAIN MOUNTING BRACKET	1
ITEM 2	COVER PLATE 1.5mm ALUMINIUM	1
ITEM 3	SUPPORT BRACKET	1
ITEM 4	SPACER	2
ITEM 5	CLEAR BRAKE & TAIL-LIGHT	1
ITEM 6	RUBBER GROMMET	1
ITEM 7	M8 BUTTON HEAD BOLT	2
ITEM 8	M6x20mm BUTTON HEAD BOLT	2
ITEM 9	M6x25mm BUTTON HEAD BOLT	2
ITEM 10	M6x12mm BUTTON HEAD BOLT	6
ITEM 11	COUNTERSUNK BOLT	2
ITEM 12	8x16mm FLAT WASHER	4
ITEM 13	6x12mm FLAT WASHER	20
ITEM 14	5x10mm FLAT WASHER	2
ITEM 15	M6 NYLOC NUTS	10
ITEM 16	M5 NYLOC NUTS	2
ITEM 17	150mm LENGTH OF HEAT-SHRINK	3
ITEM 18	TAIL-LIGHT ILLUMINATOR CONNECTOR	1
ITEM 19	INDICATOR ADAPTOR	2

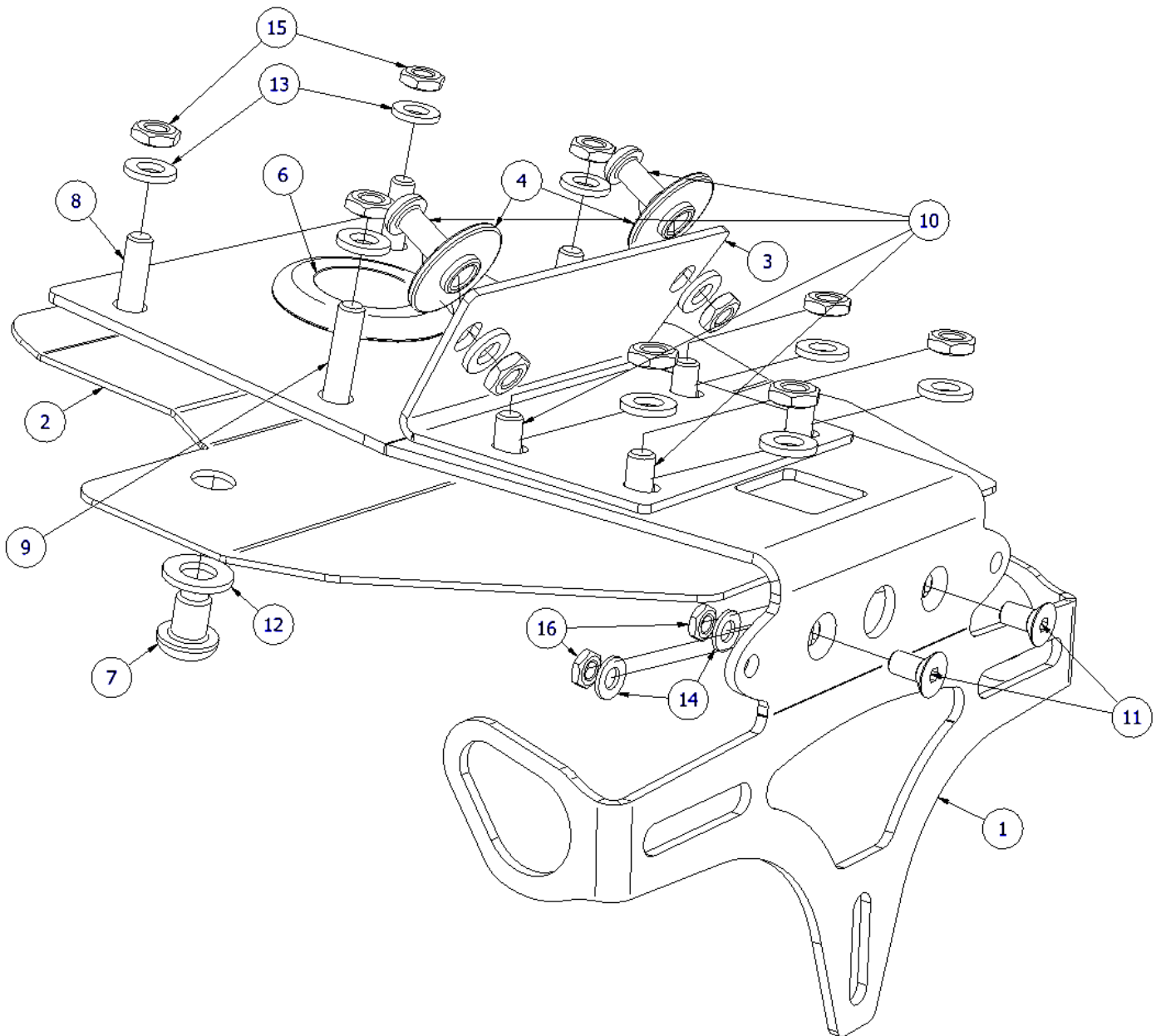
R&G

Unit 1, Shelley's Lane, East Worldham, Alton, Hampshire, GU34 3AQ
 Tel: +44 (0)1420 89007 www.rg-racing.com Email: info@rg-racing.com



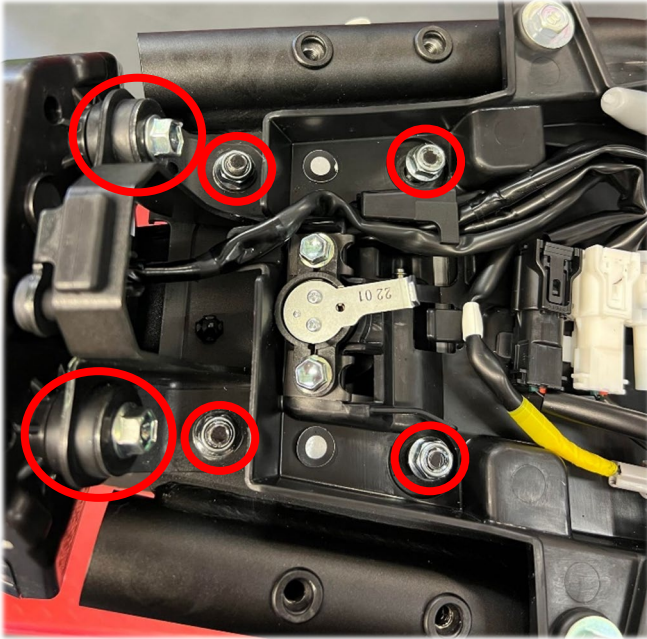
ITEM 20	TUBE BUNG	2
ITEM 21	RUBBER U-CHANNEL 300mm LENGTH	2

ASSEMBLY DIAGRAM

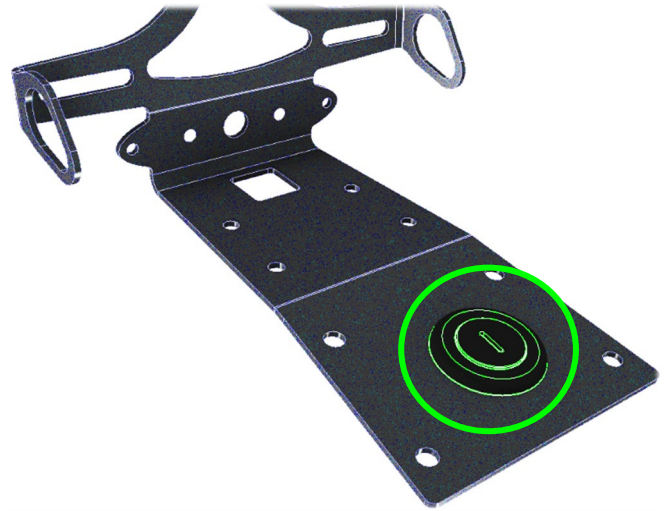




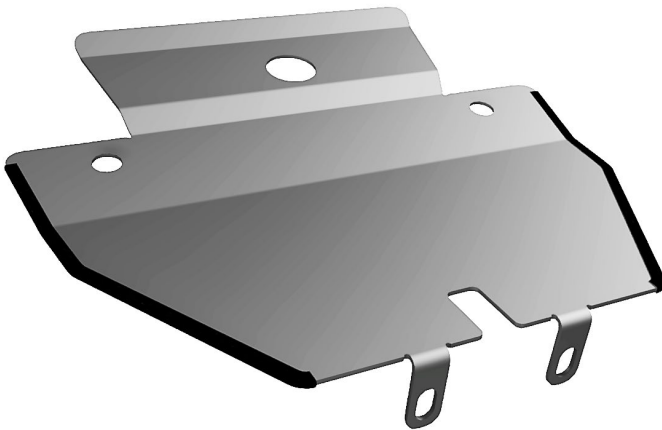
FITTING PICTURES



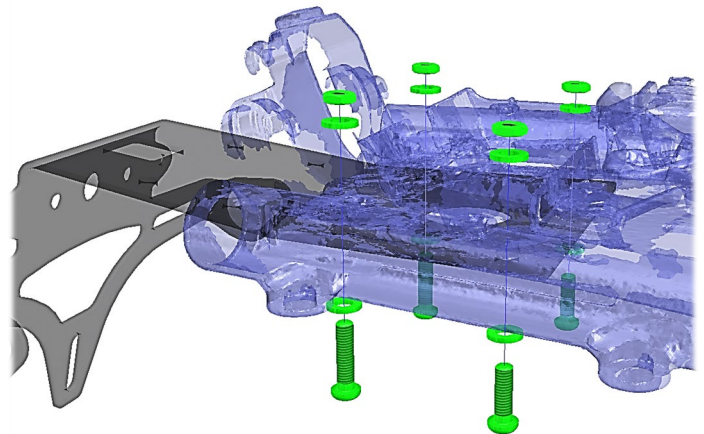
Picture 1



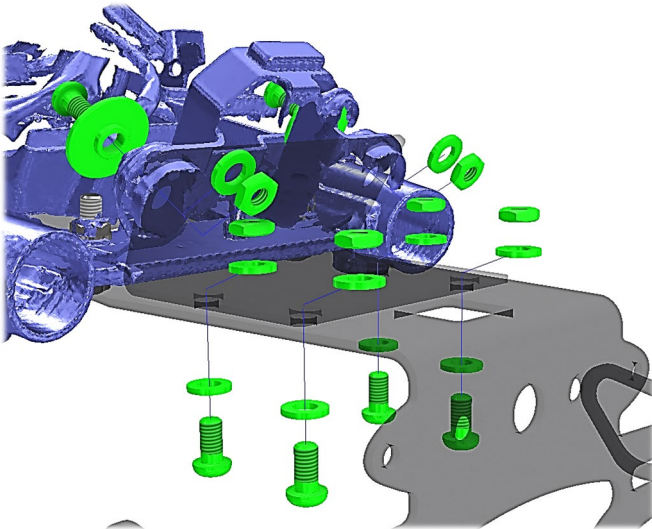
Picture 2



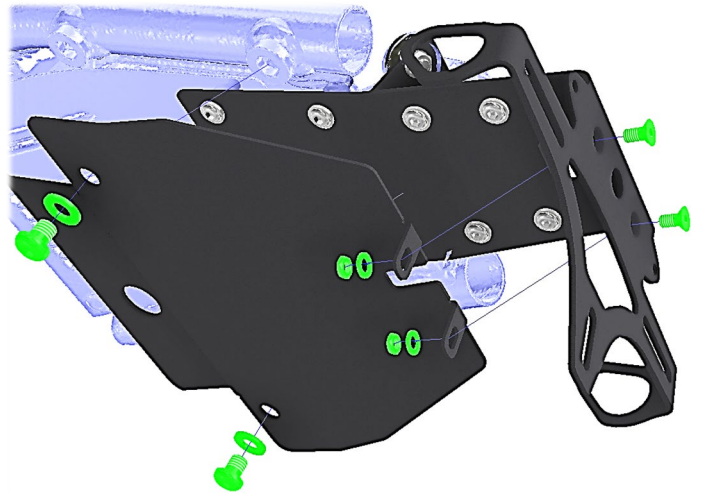
Picture 3



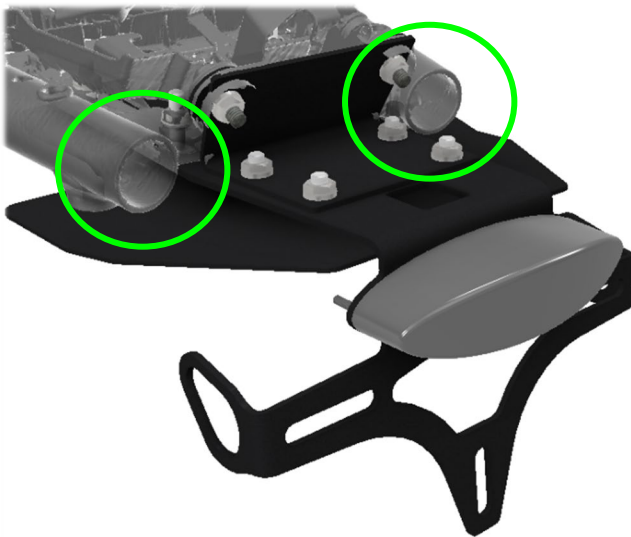
Picture 4



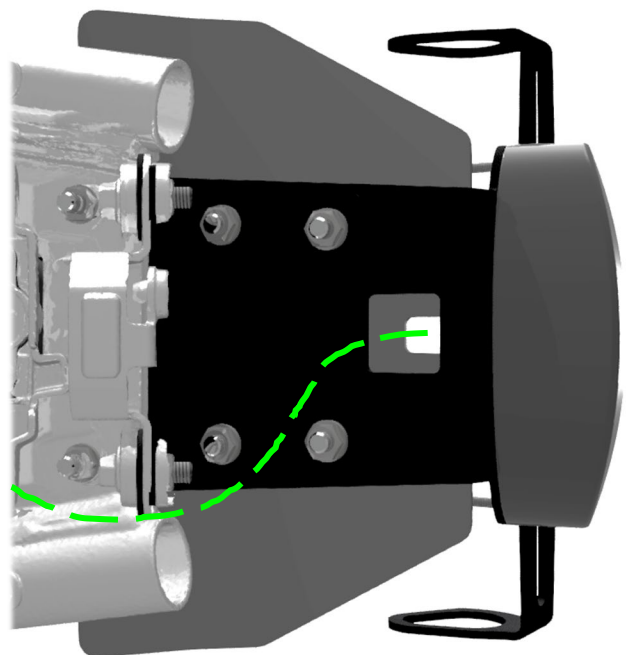
Picture 5



Picture 6



Picture 7



Picture 8



Picture 9



FITTING INSTRUCTIONS

Before fitting the R&G tail tidy you will need to remove some OEM parts. Below is a list of parts to be removed.

- Seat unit
- OEM number plate bracketry
- OEM tail-light unit
- OEM indicators (to re-use with Tail Tidy)

Tail Tidy Assembly

Before assembling this product, ensure all the components within the box are correct by comparing the legend and diagrams.

- Once the OEM seat, number plate bracket and tail-light units have been removed, remove the rubber bungs from the OEM tail-light unit basket circled in **Picture 1**.
- Fit the rubber bung (**Item 6**) into the large hole in the main bracket (**Part 1**) as shown in **Picture 2**, a slit should be cut into the flat face of the bung to allow the key to pass through.
- Apply heat shrink to the R&G tail-light unit and OEM indicators if required.
- Fit the OEM indicators to the main bracket along with the supplied indicator spacers, leaving the wires/connectors un-attached for now.
- Apply and trim the supplied rubber U channel to the outer edges of the cover plate (**Part 2**) as shown in **Picture 3**.
- Fit the main bracket to the bike by applying 4X of the 6X12mm washers (**Item 13**) to the 2X M6x20mm button head bolts (**Item 8**) and 2X M6X25mm button head bolts (**Item 9**). As seen in **Picture 4**
- Pass the bolts through the holes in the undertray of the motorcycle, then apply 4X 12mm washers and M6 nyloc nuts (**Item 15**) to the bolts.
- Loosely tighten the fasteners so there is still some movement in the bracket.
- Loosely fit the support bracket (**Part 3**) using 6X M6X12mm button head bolts (**Item 10**), washers & nuts. Using the supplied spacers (**Item 4**) on the OEM tail-light bracket as shown in **Picture 5**.
- Fully tighten all fasteners.
- Pass the R&G tail-light connector and cabling through the square hole in the main bracket, then connect all wiring to the OEM loom as shown in **Picture 9**, using the supplied connector for the tail-light unit then attach the tail-light to the main bracket.

Test the function of the brake, tail and indicators at this point and adjust if necessary.
- Offer up the cover plate (**Part 3**) and manoeuvre the cabling through the slot, then pass the M8 bolts and washers (**Items 7 & 12**) through the larger holes and into the threaded holes in the subframe and loosely tighten. **Picture 6**

R&G

Unit 1, Shelley's Lane, East Worldham, Alton, Hampshire, GU34 3AQ
 Tel: +44 (0)1420 89007 www.rg-racing.com Email: info@rg-racing.com



- Pass the M5 countersunk bolts (**Item 11**) through both plates and apply the M5 washers and nuts (**Items 14 & 16**) to the assembly. **Picture 6**
- Fully tighten all bolts.
- Use the supplied cable ties to tidy the cabling and route it along the path shown in **Picture 8**.
- Press the supplied 2X plastic tube caps into the open tubes of the sub-frame, circled in **Picture 7**.

Please note:

Both smoked and red brake & tail-lights are available through the R&G website:



Product code: LA0006



Product code: LA0005

IMPORTANT: IF FITTING A FULL-SIZE LICENCE PLATE AND PLACING IT LOW DOWN ON THE LICENCE PLATE MOUNT, THERE IS A POTENTIAL CHANCE THE LICENCE PLATE COULD HIT THE BACK WHEEL UNDER HEAVY LOAD AND OVER LARGE BUMPS IN THE ROAD. IT IS YOUR RESPONSIBILITY TO CHECK FOR THIS POSSIBILITY AND TAKE AVOIDING ACTION. FAILURE TO CHECK THIS COULD RESULT IN SERIOUS INJURY.

ISS 2 25/10/2024 (TB)

CONSUMER NOTICE

The catalogue description and any exhibition of samples are only broad indications of the Products and R&G may make design changes which do not diminish their performance or visual appeal and supplying them in such state shall conform to the order. The Buyer acknowledges no representation or warranty (other than as to title) has been given or will apply to the Products other than those in R&G's order or confirmation and the Buyer confirms it has chosen the Products as being of merchantable quality and suitable for its particular purposes. Where R&G fits the Products or undertakes other services it shall exercise reasonable skill and care and rectify any fault free of charge unless the workmanship has been disturbed. The Buyer is responsible for ensuring that the warranty on the motorcycle is not affected by the fitting of the Products. On return of any defective Products R&G shall at its option either supply a replacement or refund the purchase money but shall not be liable if the Products have been modified or used or maintained otherwise than in accordance with R&G's or manufacturer's instructions and good engineering practice or if the defect arises from accident or neglect. Other than identified above and subject to R&G not limiting its liability for causing death and personal injury, it shall not be liable for indirect or consequential loss and otherwise its liability shall be limited to the amounts paid by the Buyer for the Products or the fitting or service concerned. These terms do not affect the Buyer's statutory rights.

R&G RACING RETURNS POLICY (NON-FAULTY GOODS)

Returns must be pre-authorized (if not pre-authorized the return will be rejected). Goods may only be returned direct to us if they were purchased direct from us (customer must prove if necessary). Otherwise to be returned to original vendor. Goods must be in re-sellable condition, in the opinion of R&G Racing. All returns are subject to a 25% restocking and handling fee (25% of the

R&G

Unit 1, Shelley's Lane, East Worldham, Alton, Hampshire, GU34 3AQ
Tel: +44 (0)1420 89007 www.rg-racing.com Email: info@rg-racing.com



gross value exc. P&P – at the prevailing price at time of purchase). The customer must pay any and all carriage charges. No returns of discontinued products, unless within 14 days of purchase. This policy does not affect your statutory rights and does not refer to faulty goods.



NOTICE DE MONTAGE LP0382BK SUPPORT DE PLAQUE



CE KIT CONTIENT LES ARTICLES ILLUSTRÉS ET ÉTIQUETES SUR LA PAGE.

CERTAINES PARTIES PEUVENT ÊTRE PRÉSENTES UNIQUEMENT POUR LA CLARTE DES INSTRUCTIONS.

NE PAS PROCÉDER AU MONTAGE TANT QUE VOUS N'ÊTES PAS SÛR QUE TOUTES LES PIÈCES SOIENT PRÉSENTES.

VEUILLEZ LIRE TOUTES LES INSTRUCTIONS AVANT DE CONTINUER.

EN CAS DE DOUTE LORS DU MONTAGE DE NOS PRODUITS, CONSULTEZ UN DE NOS REVENDEURS OU FAITES APPEL À UN TECHNICIEN QUALIFIÉ.

VEUILLEZ NOTER QUE LA FAÇON DONT LE KIT EST EMBALLÉ NE REPRÉSENTE PAS NECESSAIREMENT LA MANIÈRE DE LE MONTER SUR LA MOTO.

SI DES RONDELLES EN CAOUTCHOUC SONT UTILISÉES POUR MAINTENIR LES COMPOSANTS SUR LES BOULONS, ELLES PEUVENT ÊTRE JETÉES.

R&G

Unit 1, Shelley's Lane, East Worldham, Alton, Hampshire, GU34 3AQ
Tel: +44 (0)1420 89007 www.rg-racing.com Email: info@rg-racing.com



LÉGENDE

ARTICLE No.	DESCRIPTION	QTÉ
ARTICLE 1	SUPPPORT DE MONTAGE PRINCIPAL	1
ARTICLE 2	PLAQUE DE COUVERTURE 1.5mm ALUMINIUM	1
ARTICLE 3	SUPPORT	1
ARTICLE 4	ENTRETOISE	2
ARTICLE 5	FEU STOP ET FEU ARRIÈRE	1
ARTICLE 6	ŒILLET EN CAOUTCHOUC	1
ARTICLE 7	M8 BOULON	2
ARTICLE 8	M6x20mm BOULON	2
ARTICLE 9	M6x25mm BOULON	2
ARTICLE 10	M6x12mm BOULON	6
ARTICLE 11	BOULON	2
ARTICLE 12	8x16mm RONDELLE PLATE	4
ARTICLE 13	6x12mm RONDELLE PLATE	20
ARTICLE 14	5x10mm RONDELLE PLATE	2
ARTICLE 15	M6 ÉCROUS	10
ARTICLE 16	M5 ÉCROUS	2
ARTICLE 17	150mm MANCHON THERMO RÉTRACTABLE	3
ARTICLE 18	CONNECTEUR DE FEU DE PLAQUE	1
ARTICLE 19	ADAPTATEUR DE CLIGNOTANT	2
ARTICLE 20	BOUCHON DE TUBE	2
ARTICLE 21	PROFILÉ EN CAOUTCHOUC EN U 300mm	2

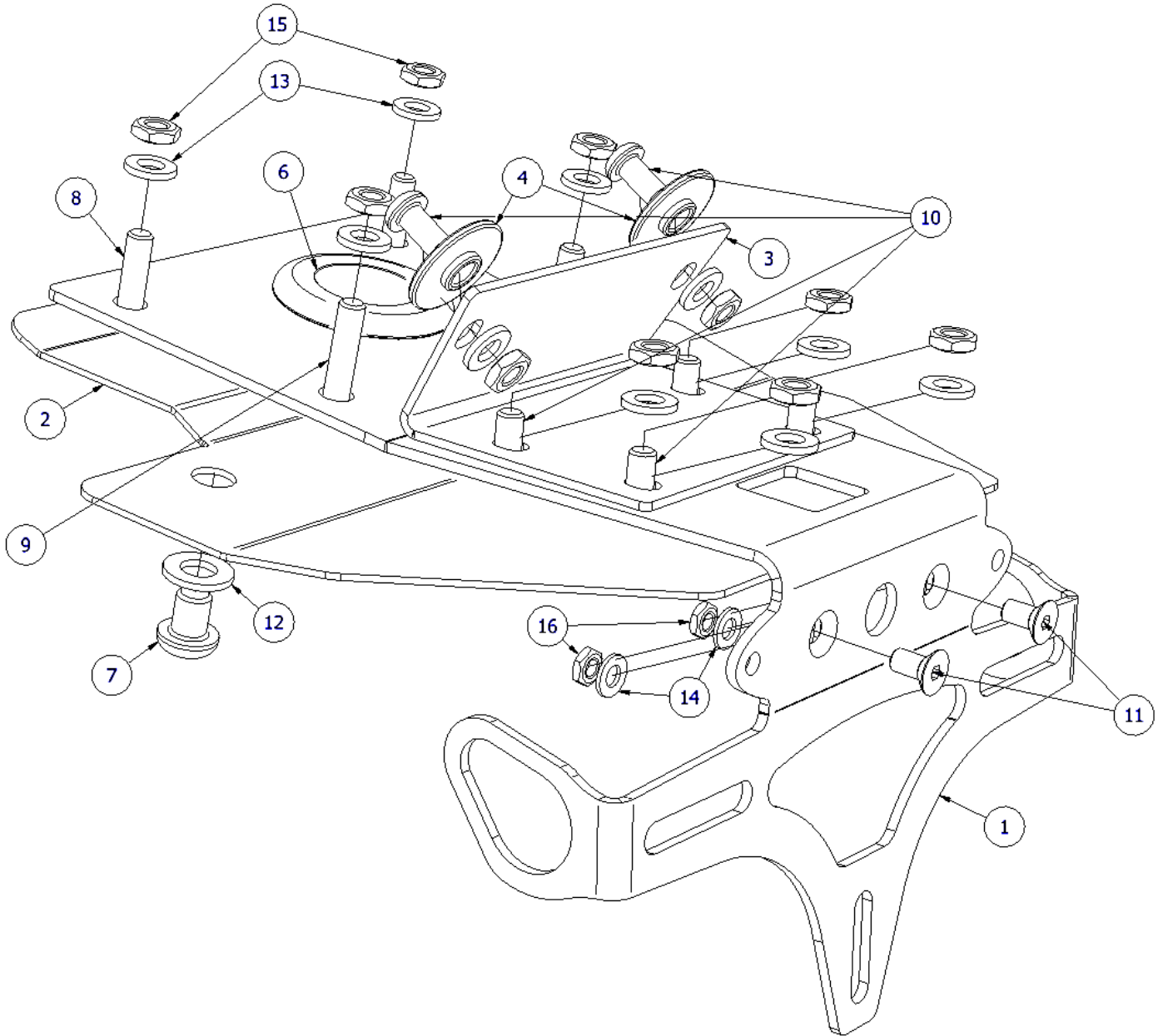
R&G

Unit 1, Shelley's Lane, East Worldham, Alton, Hampshire, GU34 3AQ

Tel: +44 (0)1420 89007 Fax: +44 (0)1420 87301 www.rg-racing.com Email: info@rg-racing.com



SCHÉMA D'ENSEMBLE



R&G

Unit 1, Shelley's Lane, East Worldham, Alton, Hampshire, GU34 3AQ

Tel: +44 (0)1420 89007 Fax: +44 (0)1420 87301 www.rg-racing.com Email: info@rg-racing.com



NOTICE DE MONTAGE

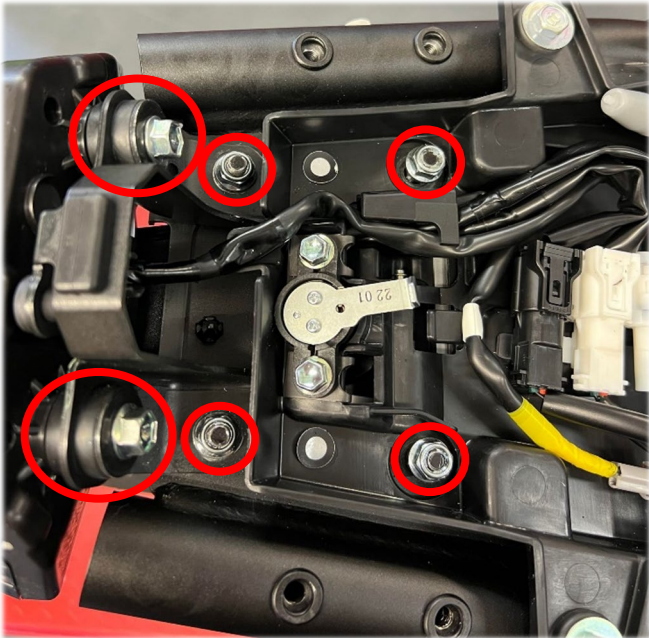


Photo 1

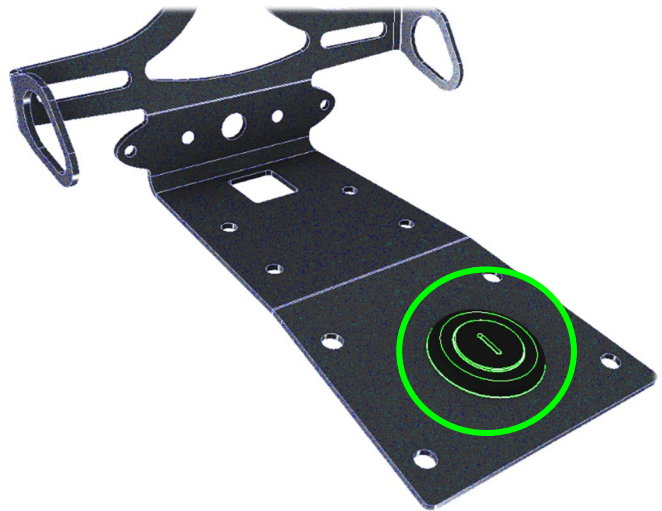


Photo 2

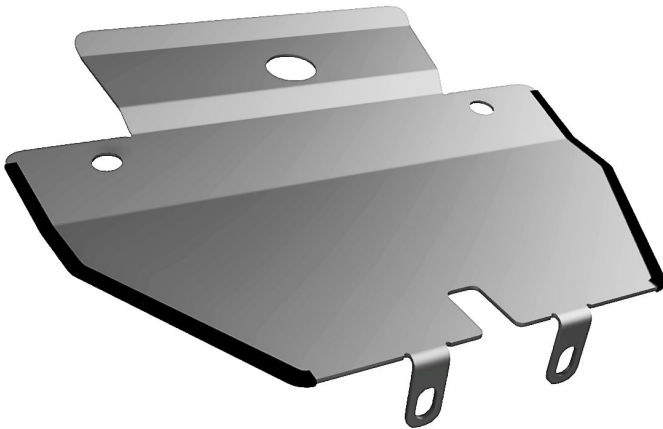


Photo 3

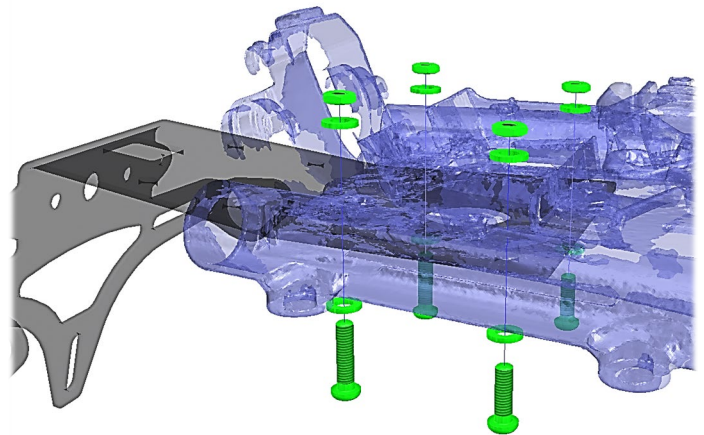


Photo 4

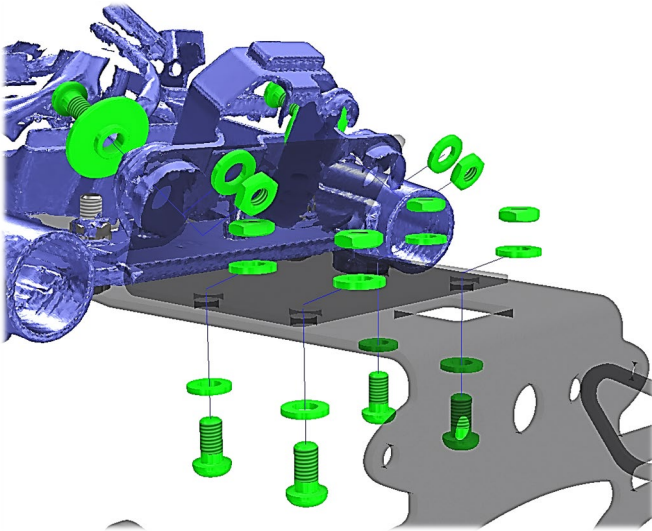


Photo 5

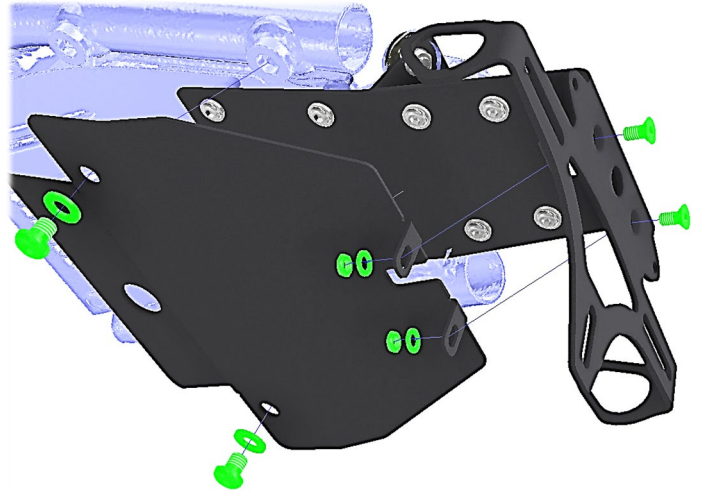


Photo 6

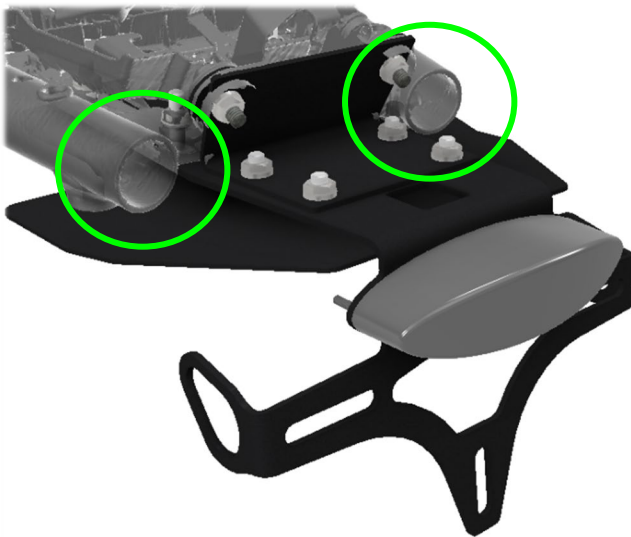


Photo 7

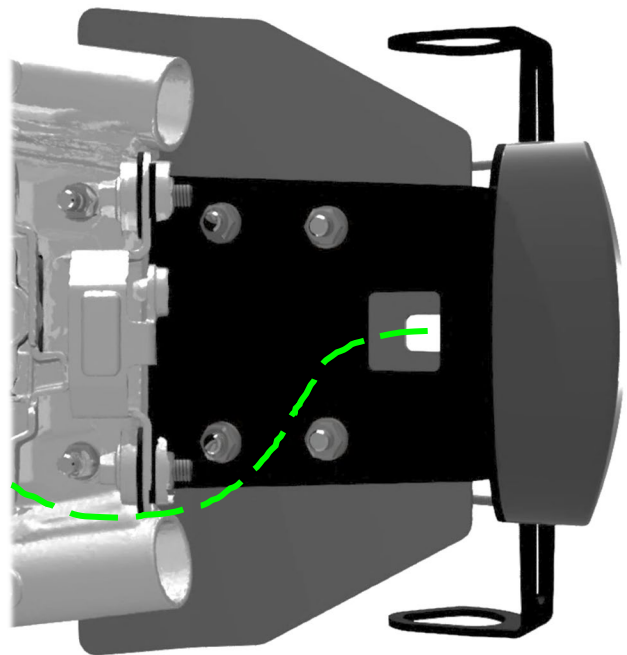


Photo 8

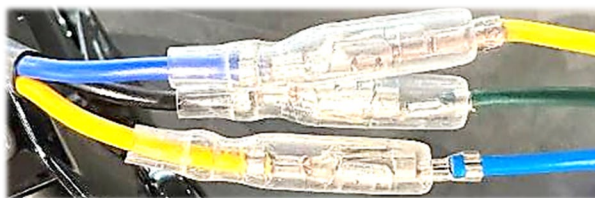


Photo 9



NOTICE DE MONTAGE

Avant d'installer le range-bagages arrière R&G, vous devrez retirer certaines pièces d'origine. Vous trouverez ci-dessous une liste des pièces à retirer.

- Siège
- Support de plaque d'immatriculation d'origine
- Feu arrière d'origine
- Clignotants d'origine (à réutiliser avec le range-bagages arrière)

Assemblage du support

Avant d'assembler ce produit, assurez-vous que tous les composants de la boîte soient corrects en comparant la légende et les schémas.

- Une fois le siège d'origine, le support de plaque d'immatriculation et les feux arrière retirés, retirez les bouchons en caoutchouc du support du feu arrière d'origine entourés sur la photo 1.
- Insérez le bouchon en caoutchouc (article 6) dans le grand trou du support principal (partie 1) comme indiqué sur la photo 2, une fente doit être découpée dans la face plate du bouchon pour permettre le passage de la clé.
- Appliquez du film thermo rétractable sur le feu arrière R&G et les clignotants d'origine si nécessaire.
- Installez les clignotants d'origine sur le support principal avec les entretoises de clignotants fournies, en laissant les fils/connecteurs non fixés pour l'instant.
- Appliquez et coupez le profilé en U en caoutchouc fourni sur les bords extérieurs de la plaque de recouvrement (partie 2) comme indiqué sur la photo 3.
- Montez le support principal sur la moto en appliquant 4X des rondelles 6X12mm (article 13) sur les 2X boulons à tête bombée M6x20mm (article 8) et 2X boulons à tête bombée M6X25mm (article 9) comme indiqué sur la photo 4.
- Passez les boulons dans les trous du dessous de caisse de la moto, puis appliquez 4X rondelles 12mm et des écrous nyloc M6 (article 15) sur les boulons.
- Serrez légèrement les fixations afin qu'il y ait encore un peu de mouvement dans le support.

- Montez sans serrer le support (pièce 3) à l'aide de 6 boulons à tête bombée M6X12 mm (article 10), de rondelles et d'écrous. Utilisez les entretoises fournies (article 4) sur le support de feu arrière d'origine comme indiqué sur la photo 5.
- Serrez complètement toutes les fixations.
- Faites passer le connecteur et le câblage du feu arrière R&G à travers le trou carré du support principal, puis connectez tout le câblage au faisceau d'origine comme indiqué sur la photo 9, à l'aide du connecteur fourni pour l'unité de feu arrière, puis fixez le feu arrière au support principal.

Testez le fonctionnement du frein, de la queue et des clignotants à ce stade et ajustez si nécessaire.

R&G

Unit 1, Shelley's Lane, East Worldham, Alton, Hampshire, GU34 3AQ

Tel: +44 (0)1420 89007 Fax: +44 (0)1420 87301 www.rg-racing.com Email: info@rg-racing.com



- Présentez la plaque de recouvrement (partie 3) et faites passer le câblage à travers la fente, puis passez les boulons et rondelles M8 (articles 7 et 12) à travers les trous plus grands et dans les trous filetés du sous-châssis et serrez légèrement (Photo 6).
- Passez les boulons à tête fraisée M5 (article 11) à travers les deux plaques et appliquez les rondelles et écrous M5 (articles 14 et 16) sur l'assemblage (Photo 6).
- Serrez complètement tous les boulons.
- Utilisez les serre-câbles fournis pour ranger le câblage et acheminez-le le long du chemin indiqué sur la photo 8.
- Enfoncez les 2X capuchons de tube en plastique fournis dans les tubes ouverts du sous-châssis, entourés sur la photo 7.

Note :

Les feux stop et arrière fumés et rouges sont disponibles sur le site Web de R&G



Code produit : LA0006



Code produit : LA0005

IMPORTANT : SI VOUS MONTEZ UNE PLAQUE D'IMMATRICULATION DE GRANDE TAILLE ET LA PLACEZ BIEN EN BAS SUR LE SUPPORT DE PLAQUE D'IMMATRICULATION, IL Y A UN RISQUE QUE LA PLAQUE D'IMMATRICULATION FRAPPE LA ROUE ARRIÈRE SOUS UNE CHARGE LOURDE ET SUR DE GROSSES BOSSES SUR LA ROUTE. IL EST DE VOTRE RESPONSABILITÉ DE VÉRIFIER CETTE POSSIBILITÉ ET DE PRENDRE DES MESURES POUR L'ÉVITER. NE PAS VÉRIFIER CELA POURRAIT ENTRAÎNER DES BLESSURES GRAVES.

ISS 2 25/10/2024 (TB)

CONSUMER NOTICE

The catalogue description and any exhibition of samples are only broad indications of the Products and R&G may make design changes which do not diminish their performance or visual appeal and supplying them in such state shall conform to the order. The Buyer acknowledges no representation or warranty (other than as to title) has been given or will apply to the Products other than those in R&G's order or confirmation and the Buyer confirms it has chosen the Products as being of merchantable quality and suitable for its particular purposes. Where R&G fits the Products or undertakes other services it shall exercise reasonable skill and care and rectify any fault free of charge unless the workmanship has been disturbed. The Buyer is responsible for ensuring that the warranty on the motorcycle is not affected by the fitting of the Products. On return of any defective Products R&G shall at its option either supply a replacement or refund the purchase money but shall not be liable if the Products have been modified or used or maintained otherwise than in accordance with R&G's or manufacturer's instructions and good engineering practice or if the defect arises from accident or neglect. Other than identified above and subject to R&G not limiting its liability for causing death

R&G

Unit 1, Shelley's Lane, East Worldham, Alton, Hampshire, GU34 3AQ

Tel: +44 (0)1420 89007 Fax: +44 (0)1420 87301 www.rg-racing.com Email: info@rg-racing.com



and personal injury, it shall not be liable for indirect or consequential loss and otherwise its liability shall be limited to the amounts paid by the Buyer for the Products or the fitting or service concerned. These terms do not affect the Buyer's statutory rights.

R&G RACING RETURNS POLICY (NON-FAULTY GOODS)

Returns must be pre-authorized (if not pre-authorized the return will be rejected). Goods may only be returned direct to us if they were purchased direct from us (customer must prove if necessary). Otherwise to be returned to original vendor. Goods must be in re-sellable condition, in the opinion of R&G Racing. All returns are subject to a 25% restocking and handling fee (25% of the gross value exc. P&P – at the prevailing price at time of purchase). The customer must pay any and all carriage charges. No returns of discontinued products, unless within 14 days of purchase. This policy does not affect your statutory rights and does not refer to faulty goods.

R&G

Unit 1, Shelley's Lane, East Worldham, Alton, Hampshire, GU34 3AQ

Tel: +44 (0)1420 89007 Fax: +44 (0)1420 87301 www.rg-racing.com Email: info@rg-racing.com