



FITTING INSTRUCTIONS FOR LP0373BK
LICENCE PLATE BRACKET



This kit contains the items pictured and labelled over page.
Some parts may be shown for clarity of instructions only.
Do not proceed until you are sure all parts are present.
Please read all instructions before proceeding.

IF IN ANY DOUBT WHEN FITTING OUR PRODUCTS, CONSULT ONE OF OUR DEALERS
OR HAVE FITTED BY A QUALIFIED TECHNICIAN.

Please note that the way the kit is packed does not necessarily represent the way of mounting to the bike.

In the event of rubber washers being used to hold components onto bolts, these rubber washers can be thrown away.

R&G



<u>TOOLS REQUIRED</u>	<u>GENERAL TORQUE SETTINGS</u>
<ul style="list-style-type: none"> • Set of metric Allen keys to include 4 - 6 A/F size. • Socket set to include 8 and 10mm A/F socket and wrench. <ul style="list-style-type: none"> • Phillip screwdriver • Small amount of super glue. 	M4 BOLT = 8Nm M5 BOLT = 12Nm M6 BOLT = 15Nm M8 BOLT = 20Nm M10 BOLT = 40Nm M12 BOLT = 40Nm

LEGEND

ITEM No.	DESCRIPTION	QTY
ITEM 1	TAIL TIDY BRACKET (TB0373)	1
ITEM 2	KEY LOCK COVER BRACKET (TB0204)	1
ITEM 3	LICENSE PLATE ILLUMINATOR (LA0002)	1
ITEM 4	INDICATOR ADAPTORS	2
ITEM 5	M6 BOLT	4
ITEM 6	M6 NUT	4
ITEM 7	M6 WASHER	4
ITEM 8	KEY LOCK COVER	1
ITEM 9	O-RING	1
ITEM 10	LICENSE PLATE ILLUMINATOR CONNECTOR	1
ITEM 11	HEAT SHRINK	3
ITEM 12	CABLE TIES	3
ITEM 13	REFLECTOR	1

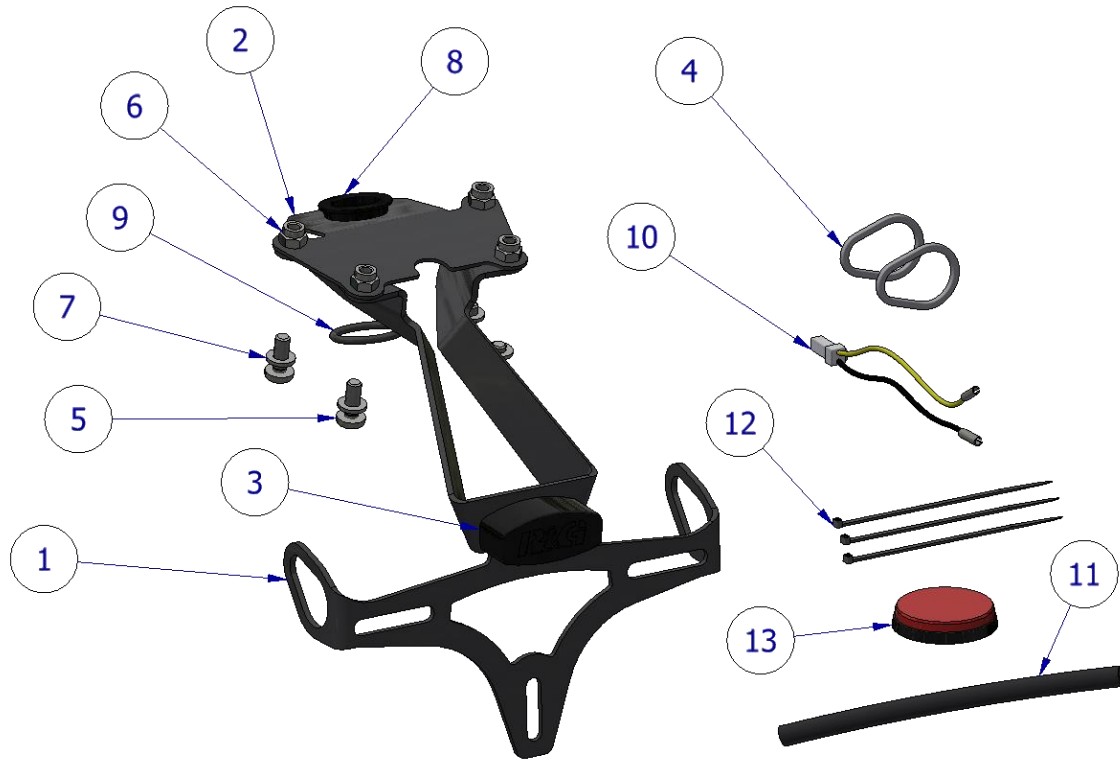
R&G

Unit 1, Shelley's Lane, East Worldham, Alton, Hampshire, GU34 3AQ

Tel: +44 (0)1420 89007 Fax: +44 (0)1420 87301 www.rg-racing.com Email: info@rg-racing.com



ASSEMBLY DIAGRAM



FITTING PICTURES



Picture 1

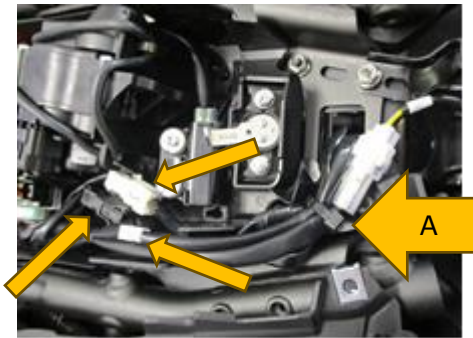


Picture 2

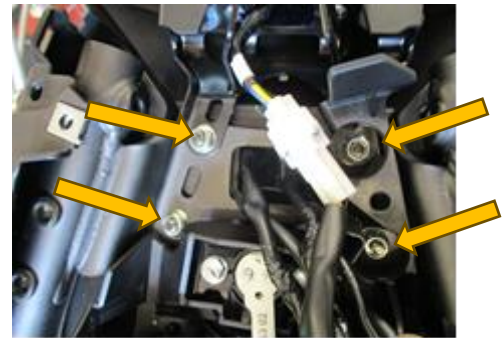




Picture 3



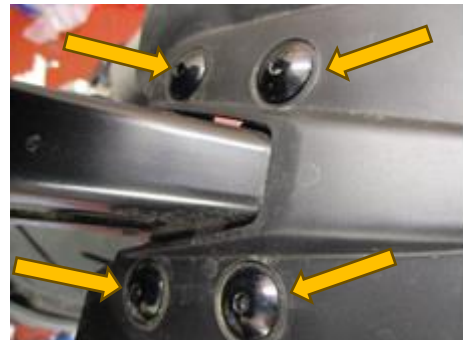
Picture 4



Picture 5



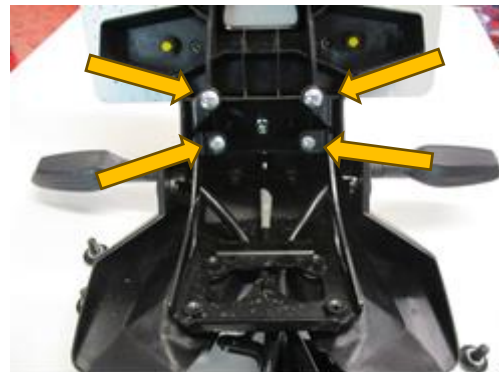
Picture 6



Picture 7



Picture 8



Picture 9



Picture 10



Picture 11

Picture 12

R&G

Unit 1, Shelley's Lane, East Worldham, Alton, Hampshire, GU34 3AQ

Tel: +44 (0)1420 89007 Fax: +44 (0)1420 87301 www.rg-racing.com Email: info@rg-racing.com



Picture 13



Picture 14



Picture 15



Picture 16



Picture 17



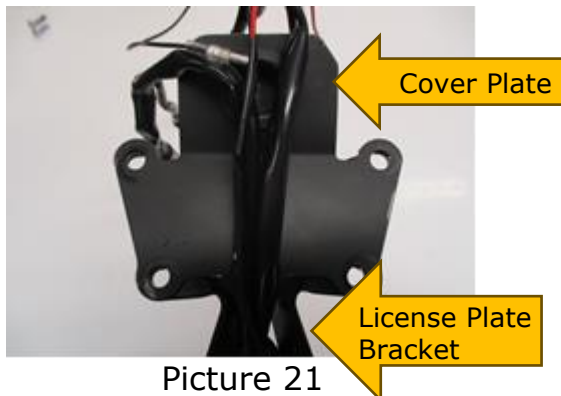
Picture 18



Picture 19



Picture 20



Picture 21



Picture 22

FITTING INSTRUCTIONS

- Remove the seat using the key
- Remove the 3 bolts arrowed in Picture 1 using 4mm Allen key and a Phillip screwdriver.
- Starting from the LHS of the bike, loosen the two bolts arrowed in Picture 2 using a 6mm Allen key. It is not necessary to remove the bolts completely. Repeat the procedure for the RHS bolts.
- Remove the four bolts arrowed in picture 3. Gently pull the side panels aside and remove the four bolts using 8mm socket and a wrench as shown in picture 4. Remove the seat lock bracket.
- Disconnect all tail unit connectors as arrowed in picture 5. *Please note the orientation of the connectors.* Cut the cable tie that holds all the wiring (Labelled A in Picture 5).
- Remove the four nuts arrowed in Picture 6 using a 10mm socket and a wrench. Keep the tail unit supported at this stage while undoing the nuts. Gently withdraw the whole tail unit assembly and the wiring off the sub-frame.
- On the OEM tail unit assembly, remove the plastic cover located on the centre underside of the bracket. Unclip the two clips arrowed in Picture 7 and withdraw the plastic cover.
- Remove the four bolts arrowed in Picture 8 using a 4mm Allen key. Keep the OEM licence plate bracket supported at this stage. Remove the bracket once all bolts are removed as shown in Picture 9.
- Remove the four screws arrowed in Picture 10 using a Phillip screwdriver. Remove the bracket as shown in Picture 11.
- Remove the spreader/ clamp plate on each indicator as shown in Picture 12.
- Remove both indicators from the OEM tail unit as shown in Picture 13.
- From the kit, take the R&G Licence plate bracket (Item 1) and fit both indicators as original to the bracket.
- From the kit, take the OEM indicator adaptor (Item 4) and fit it on the inside of the indicator stem as shown in Picture 14. Repeat the procedure to the other indicator. Shown in Picture 15.
- From the kit, take the licence plate illuminator (Item 3) and fit it through the three in-line holes located in the top centre of the Licence plate bracket (Item 1). Secure with M3 washers and nuts provided as shown in Picture 16.
- Take Licence plate illuminator shroud & apply a small amount of super glue on the inside and place it over the licence plate illuminator (Item 10).
- When all the lights are fitted it should look as the picture shown in Picture 17.

R&G

Unit 1, Shelley's Lane, East Worldham, Alton, Hampshire, GU34 3AQ

Tel: +44 (0)1420 89007 Fax: +44 (0)1420 87301 www.rg-racing.com Email: info@rg-racing.com



- From the kit, take the rubber bung (Item 8) and the O-Ring (Item 9). Insert the O-Ring onto the rubber bung as shown in Picture 18. It should look as shown in Picture 19 when finished.
- From the kit, take the key-lock cover plate (Item 2) and insert the Rubber bung assembly just built as shown in Picture 20. Ensure that the O-ring sits below the cover plate.
- Place the key-lock cover assembly on top of the licence plate bracket assembly with the rubber bung facing upwards. Locate the wiring to sit on the slot provided on the cover plate. Align the four mounting holes as shown in Picture 21.
- Offer the whole assembly towards the bike, push all wiring through the centre hole of the sub-frame as original. Align the four mounting holes and insert the four M6 bolts (Item 5) and washers (Item 7) from below as shown in Picture 22. Secure the assembly with the Nyloc nuts (Item 6). Ensuring that there are no wires being caught between the licence plate bracket assembly and the sub-frame, tighten the four M6 nyloc nuts to 15Nm.
- Connect the license plate illuminator connector (Item 10) to the license plate illuminator using the bullet connectors, and then connect the OEM style end of the connector to the OEM license plate illuminator connector.
- Connect the indicator connectors as original.
- Tidy all wiring using the cable ties (Item 12) provided in the kit.
- Refit the OEM seat lock bracket and the panel removed earlier as original.
- At this stage it is advisable to check all the lights and seat lock for full working operations.
- Fit licence plate to new licence plate bracket (it may require re-drilling).
- Refit the seat.
- Depending on local laws, attach enclosed red reflector (Item 13) in an appropriate location.
- Please test the indicators, rear light and licence plate illuminator before riding.

IMPORTANT: FOR SAFETY, ENSURE THE LICENCE PLATE IS PLACED AS HIGH AS POSSIBLE ON THE TAIL TIDY (IT MAY REQUIRE DRILLING). IF FITTING A LICENCE PLATE OF 200MM OR LONGER (INCLUDING ANY SHROUD OR REFLECTOR ATTACHMENT) TO THE BRACKET, BEFORE RIDING, FULLY COMPRESS THE SUSPENSION TO ENSURE NO PART OF THE ASSEMBLY CAN CONTACT THE TYRE WHILE THE VEHICLE IS IN MOTION OR UNDER LOAD. IT IS YOUR RESPONSIBILITY TO CHECK FOR THIS POSSIBILITY AND TAKE AVOIDING ACTION. FAILURE TO CHECK THIS COULD RESULT IN SERIOUS INJURY OR DAMAGE TO THE MOTORCYCLE.

ISSUE 1 05/01/2024 MH

CONSUMER NOTICE

The catalogue description and any exhibition of samples are only broad indications of the Products and R&G may make design changes which do not diminish their performance or visual appeal and supplying them in such state shall conform to the order. The Buyer acknowledges no representation or warranty (other than as to title) has been given or will apply to the Products other than those in R&G's order or confirmation and the Buyer confirms it has chosen the Products as being of merchantable quality and suitable for its particular purposes. Where R&G fits the Products or undertakes other services it shall exercise reasonable skill and care and rectify any fault free of charge unless the workmanship has been disturbed. The Buyer is responsible for ensuring that the warranty on the motorcycle is not affected by the fitting of the Products. On return of any defective Products R&G shall at its option either supply a replacement or refund the purchase money but shall not be liable if the Products have been modified or used or maintained otherwise than in accordance with R&G's or manufacturer's instructions and good engineering practice or if the defect arises from accident or neglect. Other than identified above and subject to R&G not limiting its liability for causing death and personal injury, it shall not be liable for indirect or consequential loss and otherwise its liability shall be limited to the amounts paid by the Buyer for the Products or the fitting or service concerned. These terms do not affect the Buyer's statutory rights.

R&G RACING RETURNS POLICY (NON-FAULTY GOODS)

Returns must be pre-authorized (if not pre-authorized the return will be rejected). Goods may only be returned direct to us if they were purchased direct from us (customer must prove if necessary). Otherwise to be returned to original vendor. Goods must be in re-sellable condition, in the opinion of R&G Racing. All returns are subject to a 25% restocking and handling fee (25% of the gross value exc. P&P - at the prevailing price at time of

R&G

Unit 1, Shelley's Lane, East Worldham, Alton, Hampshire, GU34 3AQ

Tel: +44 (0)1420 89007 Fax: +44 (0)1420 87301 www.rg-racing.com Email: info@rg-racing.com



purchase). The customer must pay any and all carriage charges. No returns of discontinued products, unless within 14 days of purchase. This policy does not affect your statutory rights and does not refer to faulty goods.

NOTICE DE MONTAGE LP0373BK
SUPPORT DE PLAQUE



CE KIT CONTIENT LES ARTICLES ILLUSTRÉS ET ÉTIQUETES SUR LA PAGE.

CERTAINES PARTIES PEUVENT ÊTRE PRÉSENTES UNIQUEMENT POUR LA CLARTE DES INSTRUCTIONS.

NE PAS PROCÉDER AU MONTAGE TANT QUE VOUS N'ÊTES PAS SÛR QUE TOUTES LES PIÈCES SOIENT PRÉSENTES.

VEUILLEZ LIRE TOUTES LES INSTRUCTIONS AVANT DE CONTINUER.

EN CAS DE DOUTE LORS DU MONTAGE DE NOS PRODUITS, CONSULTEZ UN DE NOS REVENDEURS OU FAITES APPEL À UN TECHNICIEN QUALIFIÉ.

VEUILLEZ NOTER QUE LA FAÇON DONT LE KIT EST EMBALLÉ NE REPRÉSENTE PAS NECESSAIREMENT LA MANIÈRE DE LE MONTER SUR LA MOTO.

SI DES RONDELLES EN CAOUTCHOUC SONT UTILISÉES POUR MAINTENIR LES COMPOSANTS SUR LES BOULONS, ELLES PEUVENT ÊTRE JETÉES.

R&G

Unit 1, Shelley's Lane, East Worldham, Alton, Hampshire, GU34 3AQ

Tel: +44 (0)1420 89007 Fax: +44 (0)1420 87301 www.rg-racing.com Email: info@rg-racing.com



OUTILS REQUIS	VALEURS DE SERRAGE
<ul style="list-style-type: none"> • Clés Allen 4 & 6mm . • Clé à cliquet + douilles 8 et 10mm. <ul style="list-style-type: none"> • Tournevis cruciforme • Un peu de super glue. 	M4 BOULON = 8Nm M5 BOULON = 12Nm M6 BOULON = 15Nm M8 BOULON = 20Nm M10 BOULON = 40Nm M12 BOULON = 40Nm

LÉGENDE

ARTICLE No.	DESCRIPTION	QTÉ
ARTICLE 1	SUPPORT (TB0373)	1
ARTICLE 2	SUPPORT DE COUVERCLE DE VERROUILLAGE À CLÉ (TB0204)	1
ARTICLE 3	ÉCLAIRAGE DE PLAQUE (LA0002)	1
ARTICLE 4	ADAPTATEURS DE CLIGNOTANTS	2
ARTICLE 5	M6 BOULON	4
ARTICLE 6	M6 ÉCROU	4
ARTICLE 7	M6 RONDELLE	4
ARTICLE 8	COUVERCLE DE VERROUILLAGE À CLÉ	1
ARTICLE 9	JOINT TORIQUE	1
ARTICLE 10	CONNECTEUR DE FEU DE PLAQUE	1
ARTICLE 11	MANCHON THERMO RÉTRACTABLE	3
ARTICLE 12	COLLIERS DE SERRAGE	3
ARTICLE 13	RÉFLECTEUR	1

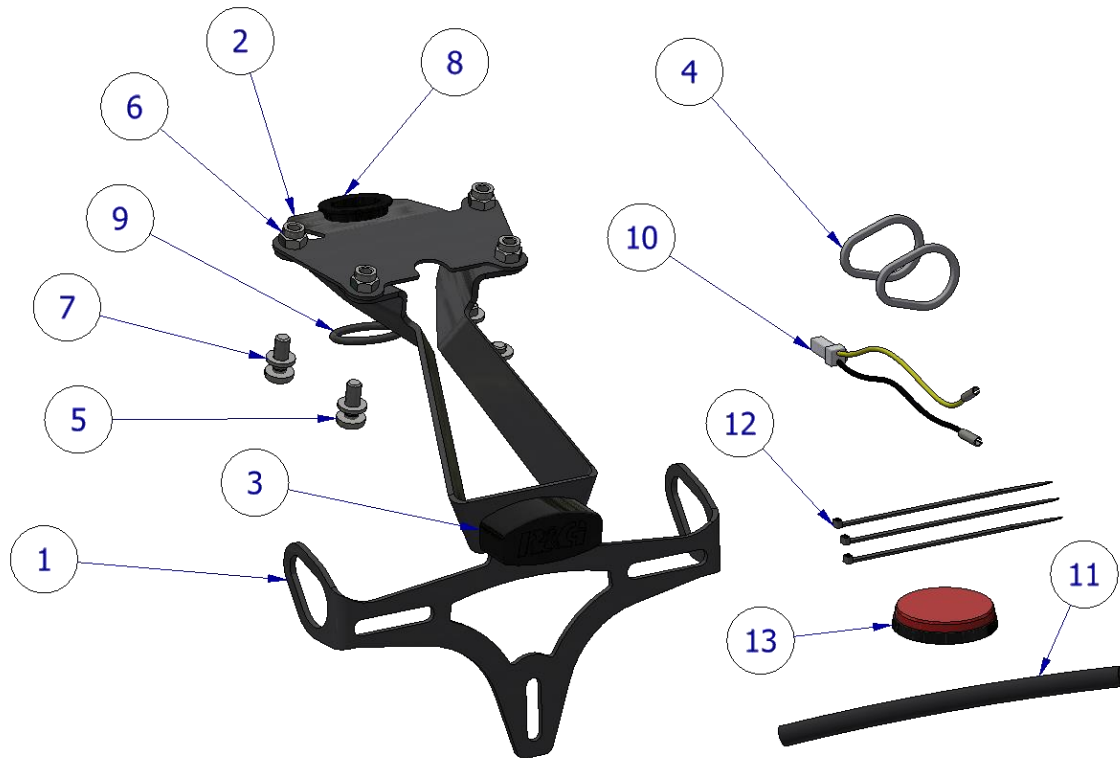
R&G

Unit 1, Shelley's Lane, East Worldham, Alton, Hampshire, GU34 3AQ

Tel: +44 (0)1420 89007 Fax: +44 (0)1420 87301 www.rg-racing.com Email: info@rg-racing.com



SCHÉMA D'ENSEMBLE



PHOTOS DE MONTAGE

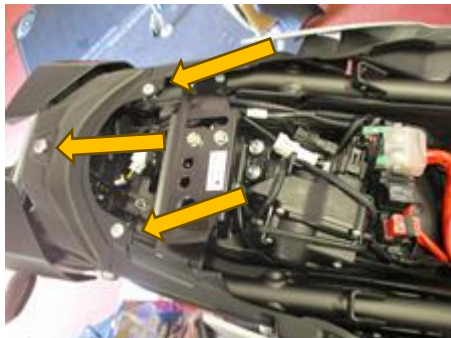


Photo 1



Photo 2



Photo 3



Photo 4

R&G

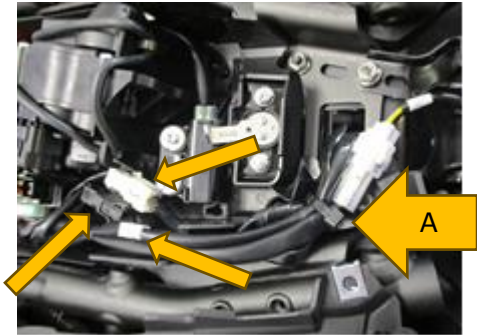


Photo 5

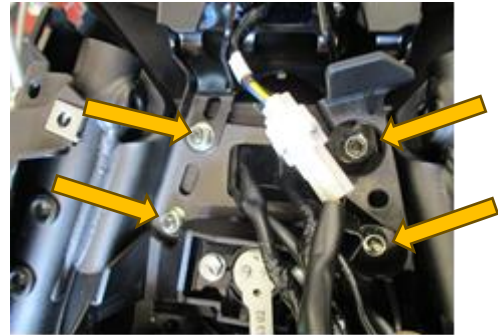


Photo 6



Photo 7

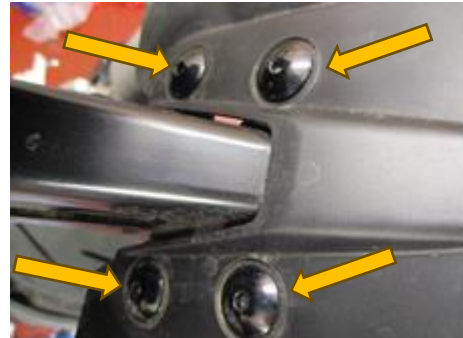


Photo 8



Photo 9

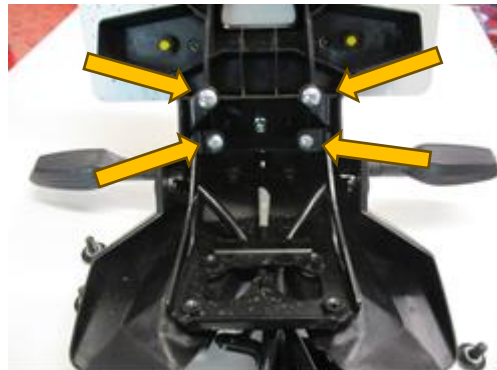


Photo 10



Photo 11



Photo 12

R&G



Photo 13



Photo 14



Photo 15



Photo 16



Photo 17



Photo 18



Photo 19



Photo 20

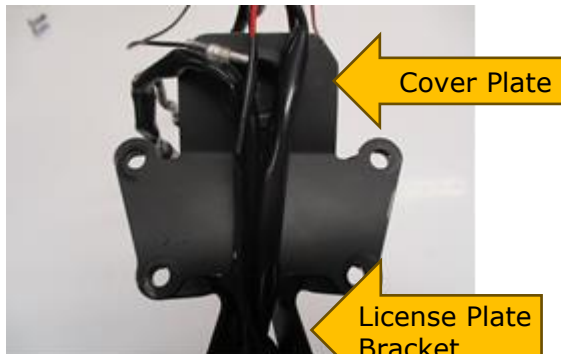


Photo 21



Photo 22

NOTICE DE MONTAGE

- Retirez le siège à l'aide de la clé
- Retirez les 3 boulons fléchés sur la photo 1 à l'aide d'une clé Allen de 4 mm et d'un tournevis cruciforme.
- En partant du côté gauche de la moto, desserrez les deux boulons fléchés sur la Photo 2 à l'aide d'une clé Allen de 6 mm. Il n'est pas nécessaire de retirer complètement les boulons. Répétez la procédure pour les boulons côté droit.
- Retirez les quatre boulons fléchés sur la photo 3. Tirez doucement les panneaux latéraux sur le côté et retirez les quatre boulons à l'aide d'une douille de 8 mm et d'une clé comme indiqué sur la photo 4
- Retirez le support de verrouillage du siège.
- Débranchez tous les connecteurs de l'unité arrière comme indiqué par la flèche sur la photo 5. Veuillez noter l'orientation des connecteurs. Coupez l'attache de câble qui maintient tout le câblage (étiqueté A sur la photo 5).
- Retirez les quatre écrous fléchés sur la Photo 6 à l'aide d'une douille de 10 mm et d'une clé. Maintenez l'empennage soutenu à ce stade tout en desserrant les écrous. Retirez délicatement l'ensemble de l'unité arrière et le câblage du sous-châssis.
- Sur l'ensemble d'unité arrière d'origine, retirez le couvercle en plastique situé sous le centre du support. Déclipsez les deux clips fléchés sur la Photo 7 et retirez le cache plastique.
- Retirez les quatre boulons fléchés sur la photo 8 à l'aide d'une clé Allen de 4 mm. Gardez le support de plaque d'immatriculation d'origine pris en charge à ce stade. Retirez le support une fois tous les boulons retirés, comme indiqué sur la photo 9.
- Retirez les quatre vis fléchées sur la photo 10 à l'aide d'un tournevis cruciforme. Retirez le support comme indiqué sur la photo 11.
- Retirez la plaque d'écartement/de serrage sur chaque clignotant comme indiqué sur la photo 12.
- Retirez les deux clignotants de l'unité arrière d'origine comme indiqué sur la photo 13.
- Dans le kit, prendre le support de plaque d'immatriculation R&G (Article 1) et monter les deux clignotants comme d'origine sur le support.
- Dans le kit, prendre l'adaptateur de clignotant d'origine (Article 4) et le monter à l'intérieur de la tige du clignotant comme indiqué sur la Photo 14. Répéter la procédure pour l'autre clignotant, voir photo 15.

R&G

Unit 1, Shelley's Lane, East Worldham, Alton, Hampshire, GU34 3AQ

Tel: +44 (0)1420 89007 Fax: +44 (0)1420 87301 www.rg-racing.com Email: info@rg-racing.com



- Dans le kit, prenez l'éclairage de plaque d'immatriculation (Article 3) et insérez-le dans les trois trous en ligne situés en haut au centre du support de plaque d'immatriculation (Article 1). Fixez avec les rondelles M3 et les écrous fournis comme indiqué sur la photo 16.
- Prenez le carénage de l'éclairage de plaque d'immatriculation, appliquez une petite quantité de super glue à l'intérieur et placez-le sur l'éclairage de plaque d'immatriculation (article 10).
- Lorsque tous les feux sont installés, cela devrait ressembler à la photo 17.
- Dans le kit, enlever le bouchon en caoutchouc (Article 8) et le joint torique (Article 9). Insérez le joint torique sur le bouchon en caoutchouc comme indiqué sur la photo 18. Cela devrait ressembler à la photo 19 une fois terminé.
- Dans le kit, prenez le couvercle de la serrure à clé (Article 2) et insérez le bouchon en caoutchouc que vous venez d'assembler, comme indiqué sur la Photo 20. Assurez-vous que le joint torique se trouve sous le couvercle.
- Placez l'ensemble de couvercle de verrouillage à clé sur le dessus de l'ensemble de support de plaque d'immatriculation avec le bouchon en caoutchouc orienté vers le haut. Localisez le câblage pour qu'il repose sur la fente prévue sur la plaque de recouvrement. Alignez les quatre trous de montage comme indiqué sur la photo 21.
- Présentez l'ensemble sur la moto, poussez tout le câblage à travers le trou central du sous-châssis comme d'origine. Alignez les quatre trous de fixation et insérez les quatre boulons M6 (Article 5) et rondelles (Article 7) par le bas comme indiqué sur la Photo 22. Fixez l'ensemble avec les écrous Nyloc (Article 6). En vous assurant qu'aucun fil ne soit coincé entre l'ensemble de support de plaque d'immatriculation et le sous-châssis, serrez les quatre écrous nyloc M6 à 15 Nm.
- Connectez le connecteur de l'éclairage de plaque d'immatriculation (article 10) à l'éclairage de plaque d'immatriculation à l'aide des connecteurs, puis connectez l'extrémité d'origine du connecteur au connecteur de l'éclairage de plaque d'immatriculation d'origine.
- Connectez les connecteurs des clignotants comme d'origine.
- Rangez tout le câblage à l'aide des serre-câbles (article 12) fournis dans le kit.
- Remettez en place le support de verrouillage du siège d'origine et le panneau retiré précédemment comme d'origine.
- À ce stade, il est conseillé de vérifier tous les feux et le verrouillage du siège pour un bon fonctionnement de l'ensemble.
- Installez la plaque d'immatriculation sur le nouveau support de plaque d'immatriculation (cela peut nécessiter un nouveau perçage).
- Remontez le siège.
- Selon les lois locales, fixez le réflecteur rouge fourni (article 13) à un endroit approprié.
- Veuillez tester les clignotants, le feu arrière et l'éclairage de plaque d'immatriculation avant de rouler.

IMPORTANT : SI VOUS MONTEZ UNE PLAQUE D'IMMATRICULATION DE GRANDE TAILLE ET LA PLACEZ BIEN EN BAS SUR LE SUPPORT DE PLAQUE D'IMMATRICULATION, IL Y A UN RISQUE QUE LA PLAQUE D'IMMATRICULATION FRAPPE LA ROUE ARRIÈRE SOUS UNE CHARGE LOURDE ET SUR DE GROSSES BOSSES SUR LA ROUTE. IL EST DE VOTRE RESPONSABILITÉ DE VÉRIFIER CETTE POSSIBILITÉ ET DE PRENDRE DES MESURES POUR ÉVITER. NE PAS VÉRIFIER CELA POURRAIT ENTRAÎNER DES BLESSURES GRAVES.

ISSUE 1 05/01/2024 MH

R&G

Unit 1, Shelley's Lane, East Worldham, Alton, Hampshire, GU34 3AQ

Tel: +44 (0)1420 89007 Fax: +44 (0)1420 87301 www.rg-racing.com Email: info@rg-racing.com

**CONSUMER NOTICE**

The catalogue description and any exhibition of samples are only broad indications of the Products and R&G may make design changes which do not diminish their performance or visual appeal and supplying them in such state shall conform to the order. The Buyer acknowledges no representation or warranty (other than as to title) has been given or will apply to the Products other than those in R&G's order or confirmation and the Buyer confirms it has chosen the Products as being of merchantable quality and suitable for its particular purposes. Where R&G fits the Products or undertakes other services it shall exercise reasonable skill and care and rectify any fault free of charge unless the workmanship has been disturbed. The Buyer is responsible for ensuring that the warranty on the motorcycle is not affected by the fitting of the Products. On return of any defective Products R&G shall at its option either supply a replacement or refund the purchase money but shall not be liable if the Products have been modified or used or maintained otherwise than in accordance with R&G's or manufacturer's instructions and good engineering practice or if the defect arises from accident or neglect. Other than identified above and subject to R&G not limiting its liability for causing death and personal injury, it shall not be liable for indirect or consequential loss and otherwise its liability shall be limited to the amounts paid by the Buyer for the Products or the fitting or service concerned. These terms do not affect the Buyer's statutory rights.

R&G RACING RETURNS POLICY (NON-FAULTY GOODS)

Returns must be pre-authorized (if not pre-authorized the return will be rejected). Goods may only be returned direct to us if they were purchased direct from us (customer must prove if necessary). Otherwise to be returned to original vendor. Goods must be in re-sellable condition, in the opinion of R&G Racing. All returns are subject to a 25% restocking and handling fee (25% of the gross value exc. P&P - at the prevailing price at time of purchase). The customer must pay any and all carriage charges. No returns of discontinued products, unless within 14 days of purchase. This policy does not affect your statutory rights and does not refer to faulty goods.

R&G

Unit 1, Shelley's Lane, East Worldham, Alton, Hampshire, GU34 3AQ

Tel: +44 (0)1420 89007 Fax: +44 (0)1420 87301 www.rg-racing.com Email: info@rg-racing.com