



FITTING INSTRUCTIONS CP0580 AERO CRASH PROTECTORS



THIS KIT CONTAINS THE ITEMS PICTURED AND LABELLED OVER PAGE.

SOME PARTS MAY BE SHOWN FOR CLARITY OF INSTRUCTIONS ONLY.

DO NOT PROCEED UNTIL YOU ARE SURE ALL PARTS ARE PRESENT.

PLEASE READ ALL INSTRUCTIONS BEFORE PROCEEDING.

**IF IN ANY DOUBT WHEN FITTING OUR PRODUCTS, CONSULT ONE OF OUR DEALERS
OR HAVE FITTED BY A QUALIFIED TECHNICIAN.**

PLEASE NOTE THAT THE WAY THE KIT IS PACKED DOES NOT NECESSARILY REPRESENT THE WAY OF
MOUNTING TO THE BIKE.

IN THE EVENT OF RUBBER WASHERS BEING USED TO HOLD COMPONENTS ONTO BOLTS,
THESE RUBBER WASHERS CAN BE THROWN AWAY.

DIGITAL COPIES OF THESE INSTRUCTIONS ARE AVAILABLE FROM:

WWW.RG-RACING.COM

R&G Racing

Unit 1, Shelley's Lane, East Worldham, Alton, Hampshire, GU34 3AQ

Tel: +44 (0)1420 89007 Fax: +44 (0)1420 87301 www.rg-racing.com Email: info@rg-racing.com



<u>TOOLS REQUIRED</u>	<u>GENERAL TORQUE SETTINGS</u>
<ul style="list-style-type: none"> • 3/8" or 1/2" HEX KEY BIT SET • 17mm A/F SOCKET & WRENCH • TORQUE WRENCH (UP TO 50Nm) • SUITABLE SUPPORT JACK 	<p>M4 BOLT = 8Nm</p> <p>M5 BOLT = 12Nm</p> <p>M6 BOLT = 15Nm</p> <p>M8 BOLT = 20Nm</p> <p>M10 BOLT = 40Nm</p> <p>M12 BOLT = 40Nm</p>

LEGEND

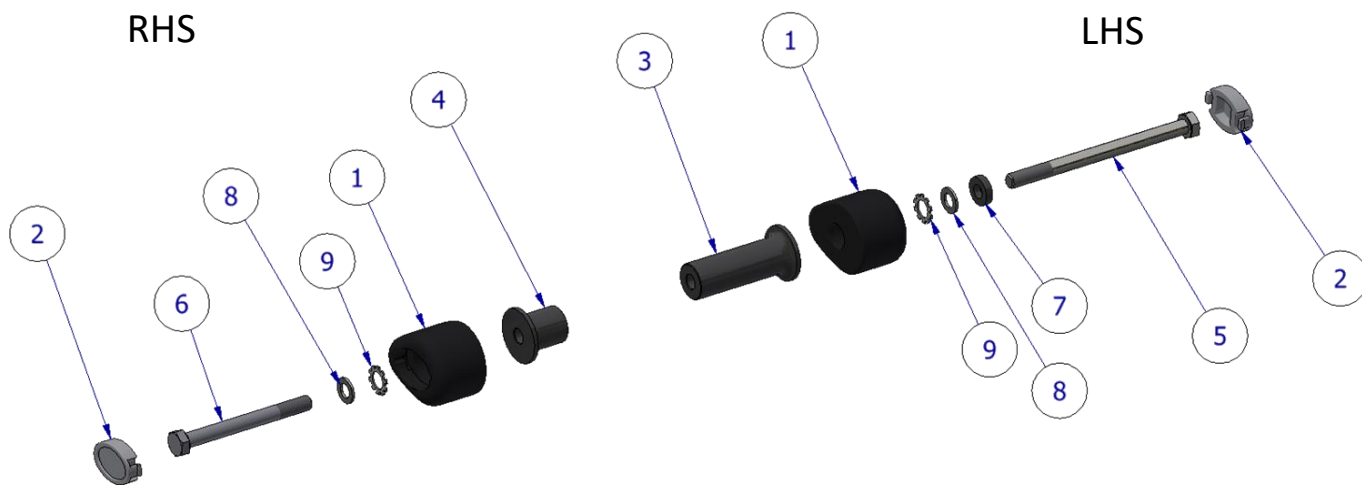
ITEM NO.	DESCRIPTION	QTY
ITEM 1	BOBBINS	2
ITEM 2	BOBBIN CAPS	2
ITEM 3	SPACER 68mm LONG (LHS)	1
ITEM 4	SPACER 52mm LONG (RHS)	1
ITEM 5	140mm HEX HEAD BOLT (LHS)	1
ITEM 6	120mm HEX HEAD BOLT (RHS)	1
ITEM 7	5mm SPACER	1
ITEM 8	M10 WASHER	2
ITEM 9	LOCKING WASHERS	2

AERO-STYLE CRASH PROTECTOR ORIENTATION





LHS & RHS EXPLODED ASSEMBLY VIEW



FITTING PICTURES



Picture 1



Picture 2

FITTING INSTRUCTIONS

Before removing engine bolts, ensure the bike is upright and supported by a suitable engine stand or jack placed under the sump of the motorbike to support the partial weight of the engine, this will prevent the engine from moving during fitting. **DO NOT REMOVE MORE THAN 1 ENGINE BOLT AT ANY TIME.**



PREPARATION:

- Place a suitable jack beneath the engine in a central position using a piece of wood between the jack and engine.
- Apply very light pressure to the underside of the engine to support the engine during the fitment process.

Assemble the crash protectors before removing the engine bolts to limit the amount of time the engine is partially un-supported.

- Following the assembly diagram place one of the M10 washers (**ITEM 8**) over the bolts (**ITEMS 5 & 6**) followed by the shake proof washer (**ITEM 9**), the LHS bolt (**ITEM 5**) will also need the 5mm spacer (**ITEM 7**) as shown above.
- Insert the 140mm bolt (**ITEM 5**) with washers into the bobbin (**ITEM 1**) followed by the 68mm long spacer (**ITEM 3**).
- Then insert the 120mm bolt (**ITEM 6**) with washers into the bobbin (**ITEM 1**) followed by the 52mm long spacer (**ITEM 4**).

INSTALLATION:

- Use a ½" or 3/8" hex key bit & wrench to remove the RHS engine bolt (**Picture 1**).
- Leaving the OEM spacers in place, push the RHS bolt/assembly you prepared earlier into the engine mount hole and thread by hand to avoid cross threading.

NOTE: To avoid cross threading apply forward pressure to the bolt and rotate counter-clockwise until a click is heard then begin to turn clockwise & tighten.

- Rotate the bobbin a few degrees counter-clockwise and hold in place while tightening to stop the bobbin rotating too far while tightening.
- Using a torque wrench with 17mm socket fitted, tighten the bolt to 45 Nm.
- Repeat the process for the other side referring to **Picture 2**.
- Once completed, double check torque settings & the position/orientation of the bobbins then push the bobbin caps (**ITEM 2**) into place and remove the jack.

Please note: *Torque of the engine/bobbin bolts should be checked at regular intervals when doing routine maintenance/servicing.*

ISSUE 1 - 05/07/2024 (MH)

CONSUMER NOTICE

The catalogue description and any exhibition of samples are only broad indications of the Products and R&G may make design changes which do not diminish their performance or visual appeal and supplying them in such state shall conform to the order. The Buyer acknowledges no representation or warranty (other than as to title) has been given or will apply to the Products other than those in R&G's order or confirmation and the Buyer confirms it has chosen the Products as being of merchantable quality and suitable for its particular purposes. Where R&G fits the Products or undertakes other services it shall exercise reasonable skill and care and rectify any fault free of charge unless the workmanship has been disturbed. The Buyer is responsible for ensuring that the warranty on the motorcycle is not affected by the fitting of the Products. On return of any defective Products R&G shall at its option either supply a replacement or refund the purchase money but shall not be liable if the Products have been modified or used or maintained otherwise than in accordance with R&G's or manufacturer's instructions and good engineering practice or if the defect arises from accident or neglect. Other than identified above and subject to R&G not limiting its liability for causing death and personal injury, it shall not be liable for indirect or consequential loss and otherwise its liability shall be limited to the amounts paid by the Buyer for the Products or the fitting or service concerned. These terms do not affect the Buyer's statutory rights.

R&G RACING RETURNS POLICY (NON-FAULTY GOODS)

Returns must be pre-authorised (if not pre-authorised the return will be rejected). Goods may only be returned direct to us if they were purchased direct from us (customer must prove if necessary). Otherwise to be returned to original vendor. Goods must be in re-sellable condition, in the opinion of R&G Racing. All returns are subject to a 25% restocking and handling fee (25% of the gross value exc. P&P – at the prevailing price at time of purchase). The customer must pay any and all carriage charges. No returns of discontinued products, unless within 14 days of purchase. This policy does not affect your statutory rights and does not refer to faulty goods.

R&G Racing

Unit 1, Shelley's Lane, East Worldham, Alton, Hampshire, GU34 3AQ

Tel: +44 (0)1420 89007 Fax: +44 (0)1420 87301 www.rg-racing.com Email: info@rg-racing.com