



**FITTING INSTRUCTIONS FOR CP0526 AERO CRASH PROTECTORS
DUCATI MONSTER 950 (PLUS) 2021-**



THIS KIT CONTAINS THE ITEMS PICTURED AND LABELLED OVER PAGE.

SOME PARTS MAY BE SHOWN FOR CLARITY OF INSTRUCTIONS ONLY.

DO NOT PROCEED UNTIL YOU ARE SURE ALL PARTS ARE PRESENT.

PLEASE READ ALL INSTRUCTIONS BEFORE PROCEEDING.

**IF IN ANY DOUBT WHEN FITTING OUR PRODUCTS, CONSULT ONE OF OUR DEALERS
OR HAVE FITTED BY A QUALIFIED TECHNICIAN.**

PLEASE NOTE THAT THE WAY THE KIT IS PACKED DOES NOT NECESSARILY REPRESENT THE WAY OF
MOUNTING TO THE BIKE.

IN THE EVENT OF RUBBER WASHERS BEING USED TO HOLD COMPONENTS ONTO BOLTS,
THESE RUBBER WASHERS CAN BE THROWN AWAY.

DIGITAL COPIES OF THESE INSTRUCTIONS ARE AVAILABLE FROM:

WWW.RG-RACING.COM



<u>TOOLS REQUIRED</u>	<u>GENERAL TORQUE SETTINGS</u>
<ul style="list-style-type: none"> • SOCKET & WRENCH SET INCLUDING 17mm and 19mm SOCKETS. • TORQUE WRENCH (UP TO 50Nm) • SUITABLE SUPPORT JACK 	<p>M4 BOLT = 8Nm M5 BOLT = 12Nm M6 BOLT = 15Nm M8 BOLT = 20Nm M10 BOLT = 40Nm M12 BOLT = 40Nm</p>

LEGEND

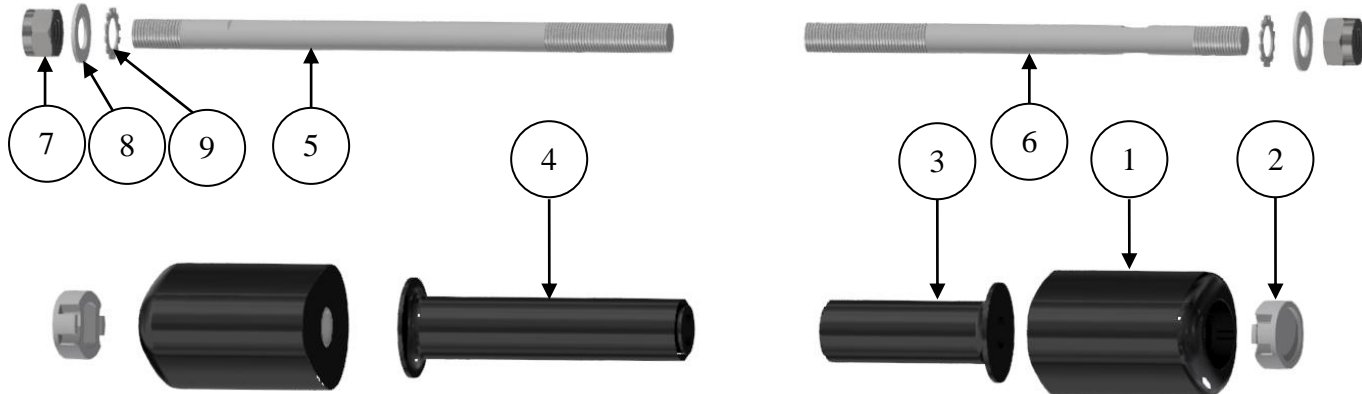
ITEM NO.	DESCRIPTION	QTY
ITEM 1	B0061 - AERO BOBBINS	2
ITEM 2	BC0002 - BOBBIN CAPS (BOTH SIDES)	2
ITEM 3	S1357 - RHS BOBBIN SPACER	1
ITEM 4	S1358 - LHS BOBBIN SPACER	1
ITEM 5	EB105 220MM ENGINE BAR (LHS)	1
ITEM 6	EB106 180MM ENGINE BAR (RHS)	1
ITEM 7	M12 NYLOC NUT	2
ITEM 8	LW0001 LOCKING WASHERS	2
ITEM 9	M12 WASHERS	2

AERO-STYLE CRASH PROTECTOR ORIENTATION

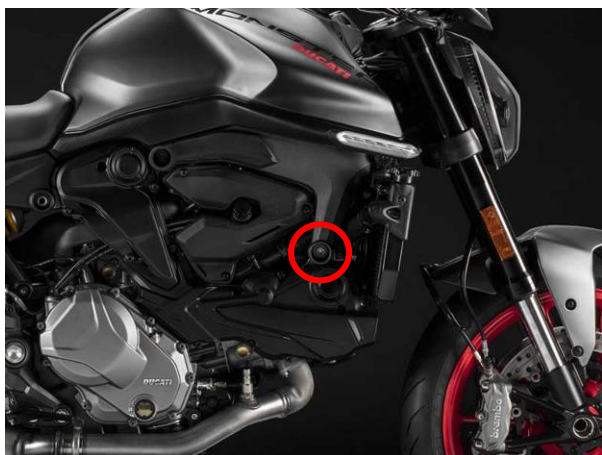




LHS & RHS EXPLODED ASSEMBLY VIEW



FITTING PICTURES



Picture 1



Picture 2



Picture 3



FITTING INSTRUCTIONS

Before removing engine bolts, ensure the bike is upright and supported by a suitable engine stand or jack placed under the sump of the motorbike to support the partial weight of the engine, this will prevent the engine from moving during fitting. DO NOT REMOVE MORE THAN 1 ENGINE BOLT AT ANY TIME.

PREPARATION:

- Place a suitable jack beneath the engine in a central position using a piece of wood or plastic between the jack and engine.
- Apply very light pressure to the underside of the engine to support the engine during the fitment process.

Assemble the crash protectors before removing the engine bolts to limit the amount of time the engine is partially un-supported.

- Screw the nyloc nuts (**ITEM 7**) onto the end of the engine bar (**ITEM 5/6**) with 20mm of thread. You can use a 10mm spanner to hold the bar while securing the nuts.
- Insert the engine bar and nut, with washers into the aero bobbin (**ITEM 1**) followed by the bobbin spacers (**ITEM 3/4**).

INSTALLATION:

- Remove the OEM engine mounting bolt shown in **Picture 1**.
 - Install the bobbin and bolt assembly pre-prepared into the engine mount. Screw the M12 engine bar and nut into the thread which will hold the assembly in position.
- NOTE: To avoid cross threading apply forward pressure to the bolt and rotate counter-clockwise until a click is heard then begin to turn clockwise & tighten.**
- Using a torque wrench with 19mm socket fitted, tighten the engine bar and nut to 45 Nm. You may need to hold the bobbin in position to prevent it turning while tightening the bolt.
 - Repeat the same process for the other side, ensuring that the bobbin faces the correct way. Note that the left side is longer than the right side so that the bobbins are positioned equally on the bike.
 - Once completed, double check torque settings & the position/orientation of the bobbins then push the bobbin caps (**ITEM2**) into place then remove the jack.

ISSUE 1 - 09/09/2021 (WW)

ISSUE 2 - 17/09/2021 - 8MM ALLEN TOOL CHANGED TO 19MM SOCKET - (WW)

ISSUE 3 - 28/09/2021 - NYLOC ERROR CORRECTED - (WW)

CONSUMER NOTICE

The catalogue description and any exhibition of samples are only broad indications of the Products and R&G may make design changes which do not diminish their performance or visual appeal and supplying them in such state shall conform to the order. The Buyer acknowledges no representation or warranty (other than as to title) has been given or will apply to the Products other than those in R&G's order or confirmation and the Buyer confirms it has chosen the Products as being of merchantable quality and suitable for its particular purposes. Where R&G fits the Products or undertakes other services it shall exercise reasonable skill and care and rectify any fault free of charge unless the workmanship has been disturbed. The Buyer is responsible for ensuring that the warranty on the motorcycle is not affected by the fitting of the Products. On return of any defective Products R&G shall at its option either supply a replacement or refund the purchase money but shall not be liable if the Products have been modified or used or maintained otherwise than in accordance with R&G's or manufacturer's instructions and good engineering practice or if the defect arises from accident or neglect. Other than identified above and subject to R&G not limiting its liability for causing death and personal injury, it shall not be liable for indirect or consequential loss and otherwise its liability shall be limited to the amounts paid by the Buyer for the Products or the fitting or service concerned. These terms do not affect the Buyer's statutory rights.

R&G RACING RETURNS POLICY (NON-FAULTY GOODS)

Returns must be pre-authorized (if not pre-authorized the return will be rejected). Goods may only be returned direct to us if they were purchased direct from us (customer must prove if necessary). Otherwise to be returned to original vendor. Goods must be in re-sellable condition, in the opinion of R&G Racing. All returns are subject to a 25% restocking and handling fee (25% of the gross value exc. P&P - at the prevailing price at time of purchase). The customer must pay any and all carriage charges. No returns of discontinued products, unless within 14 days of purchase. This policy does not affect your statutory rights and does not refer to faulty goods.

R&G Racing

Unit 1, Shelley's Lane, East Worldham, Alton, Hampshire, GU34 3AQ

Tel: +44 (0)1420 89007 Fax: +44 (0)1420 87301 www.rg-racing.com Email: info@rg-racing.com



**NOTICE DE MONTAGE POUR CP0526 PROTECTIONS CRASH
DUCATI MONSTER 950 (PLUS) 2021-**



CE KIT CONTIENT LES ARTICLES ILLUSTRÉS ET ÉTIQUETES SUR LA PAGE.

CERTAINES PARTIES PEUVENT ÊTRE PRÉSENTES UNIQUEMENT POUR LA CLARTE DES INSTRUCTIONS.

NE PAS PROCÉDER AU MONTAGE TANT QUE VOUS N'ÊTES PAS SÛR QUE TOUTES LES PIÈCES SOIENT PRÉSENTES.

VEUILLEZ LIRE TOUTES LES INSTRUCTIONS AVANT DE CONTINUER.

EN CAS DE DOUTE LORS DU MONTAGE DE NOS PRODUITS, CONSULTEZ UN DE NOS REVENDEURS OU FAITES APPEL À UN TECHNICIEN QUALIFIÉ.

VEUILLEZ NOTER QUE LA FAÇON DONT LE KIT EST EMBALLÉ NE REPRÉSENTE PAS NECESSAIREMENT LA MANIÈRE DE LE MONTER SUR LA MOTO.

SI DES RONDELLES EN CAOUTCHOUC SONT UTILISÉES POUR MAINTENIR LES COMPOSANTS SUR LES BOULONS, ELLES PEUVENT ÊTRE JETÉES.

NOTICE DISPONIBLE AU TÉLÉCHARGEMENT SUR :

WWW.RG-RACING.COM

R&G Racing

Unit 1, Shelley's Lane, East Worldham, Alton, Hampshire, GU34 3AQ

Tel: +44 (0)1420 89007 Fax: +44 (0)1420 87301 www.rg-racing.com Email: info@rg-racing.com



<u>TOOLS REQUIRED</u>	<u>VALEURS DE SERRAGE</u>
<ul style="list-style-type: none"> • Clé à cliquet + douilles 17mm et 19mm. • Clé dynamométrique (à 50Nm) • Prise des support 	M4 BOULON = 8Nm M5 BOULON = 12Nm M6 BOULON = 15Nm M8 BOULON = 20Nm M10 BOULON = 40Nm M12 BOULON = 40Nm

LÉGENDE

ARTICLE NO.	DESCRIPTION	QTÉ
ARTICLE 1	B0061 - BOBINES	2
ARTICLE 2	BC0002 - CAPUCHONS (LES 2 CÔTÉS)	2
ARTICLE 3	S1357 - ENTRETOISE DE PROTECTION CÔTÉ DROIT	1
ARTICLE 4	S1358 - ENTRETOISE DE PROTECTION CÔTÉ GAUCHE	1
ARTICLE 5	EB105 220MM BARRE MOTEUR (CÔTÉ GAUCHE)	1
ARTICLE 6	EB106 180MM BARRE MOTEUR (CÔTÉ DROIT)	1
ARTICLE 7	M12 ÉCROU	2
ARTICLE 8	LW0001 RONDELLES DE BLOCAGE	2
ARTICLE 9	M12 RONDELLES	2

ORIENTATION DE LA PROTECTION CRASH



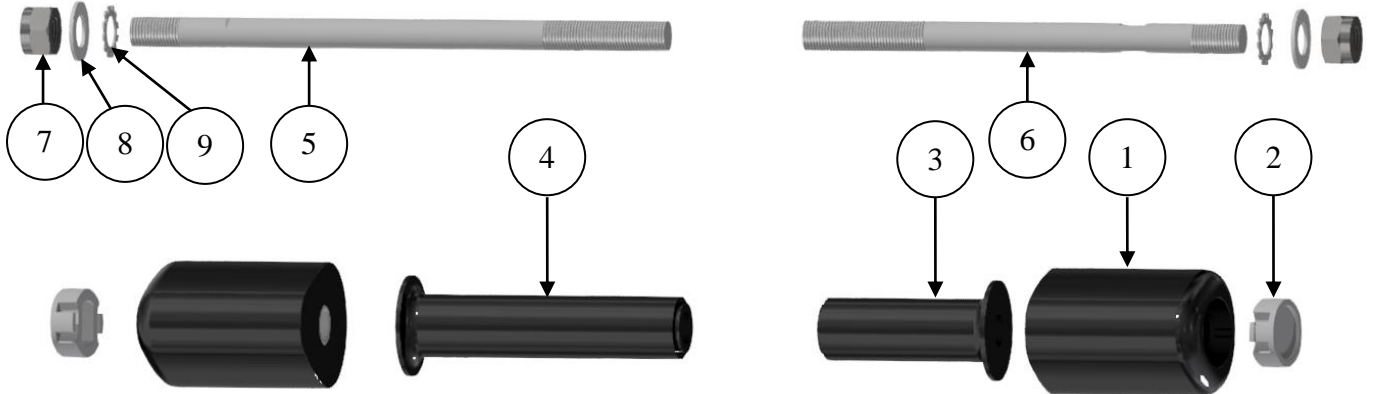
R&G Racing

Unit 1, Shelley's Lane, East Worldham, Alton, Hampshire, GU34 3AQ

Tel: +44 (0)1420 89007 Fax: +44 (0)1420 87301 www.rg-racing.com Email: info@rg-racing.com



VUE D'ENSEMBLE CÔTÉ GAUCHE & DROIT



PHOTOS DE MONTAGE

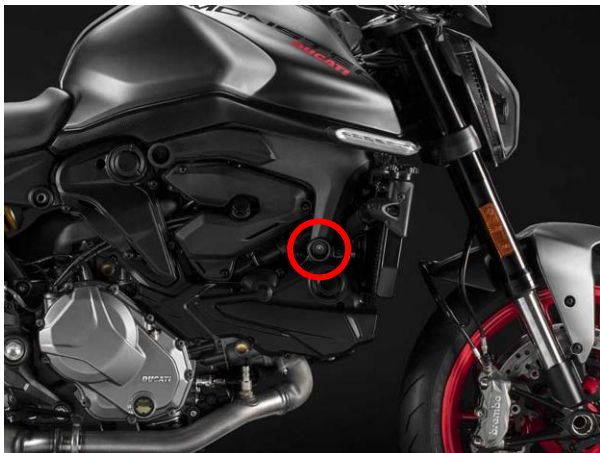


Photo 1

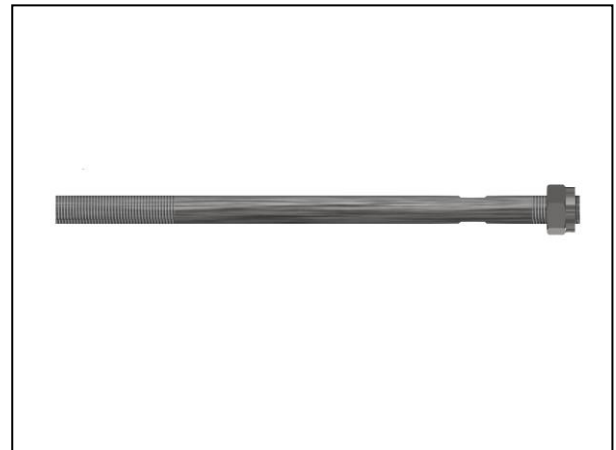


Photo 2



Photo 3



NOTICE DE MONTAGE

Avant de retirer les boulons du moteur, assurez-vous que la moto soit bien droite et soutenue par un support moteur ou un cric approprié placé sous le carter de la moto pour supporter le poids partiel du moteur, cela empêchera le moteur de bouger pendant le montage. **NE PAS ENLEVER PLUS D'UN BOULON DE MOTEUR EN SIMULTANÉ.**

PRÉPARATION:

- Placez un cric approprié sous le moteur dans une position centrale en utilisant un morceau de bois ou de plastique entre le cric et le moteur.
- Appliquez une très légère pression sur le dessous du moteur pour soutenir le moteur pendant le processus de montage.
- Assemblez les protections crash avant de retirer les boulons du moteur pour limiter la durée pendant laquelle le moteur est partiellement non soutenu.
- Visser les écrous (ARTICLE 7) sur l'extrémité de la barre moteur (ARTICLE 5/6) avec 20mm de filetage. Vous pouvez utiliser une clé de 10 mm pour maintenir la barre tout en fixant les écrous.
- Insérez la barre du moteur et l'écrou, avec les rondelles dans la protection latérale (ARTICLE 1), suivis des entretoises de protection (ARTICLE 3/4).

INSTALLATION:

- Retirez le boulon de fixation du moteur d'origine illustré sur la photo 1.
- Installez l'ensemble protection et boulon préalablement préparé dans le support du moteur. Vissez la barre de moteur M12 et l'écrou dans le filetage qui maintiendra l'ensemble en position.
REMARQUE : Pour éviter un filetage croisé, appliquez une pression vers l'avant sur le boulon et tournez dans le sens inverse des aiguilles d'une montre jusqu'à ce qu'un clic se fasse entendre, puis commencez à tourner dans le sens des aiguilles d'une montre et serrez.
- À l'aide d'une clé dynamométrique équipée d'une clé Douille 19mm, serrez la barre du moteur et l'écrou à 45 Nm. Vous devrez peut-être maintenir la protection en position pour l'empêcher de tourner pendant le serrage du boulon.
- Répétez le même processus de l'autre côté, en vous assurant que la protection soit orientée dans le bon sens. Notez que le côté gauche est plus long que le côté droit afin que les bobines soient positionnées de manière égale sur la moto.
- Une fois terminé, vérifiez les réglages de couple et la position/orientation des protections, puis poussez les capuchons de protection (ARTICLE2) en place, puis retirez le cric.

ISSUE 1 - 09/09/2021 (WW)

ISSUE 2 - 17/09/2021 - 8MM ALLEN TOOL CHANGED TO 19MM SOCKET - (WW)

ISSUE 3 - 28/09/2021 - NYLOC ERROR CORRECTED - (WW)

CONSUMER NOTICE

The catalogue description and any exhibition of samples are only broad indications of the Products and R&G may make design changes which do not diminish their performance or visual appeal and supplying them in such state shall conform to the order. The Buyer acknowledges no representation or warranty (other than as to title) has been given or will apply to the Products other than those in R&G's order or confirmation and the Buyer confirms it has chosen the Products as being of merchantable quality and suitable for its particular purposes. Where R&G fits the Products or undertakes other services it shall exercise reasonable skill and care and rectify any fault free of charge unless the workmanship has been disturbed. The Buyer is responsible for ensuring that the warranty on the motorcycle is not affected by the fitting of the Products. On return of any defective Products R&G shall at its option either supply a replacement or refund the purchase money but shall not be liable if the Products have been modified or used or maintained otherwise than in accordance with R&G's or manufacturer's instructions and good engineering practice or if the defect arises from accident or neglect. Other than identified above and subject to R&G not limiting its liability for causing death and personal injury, it shall not be liable for indirect or consequential loss and otherwise its liability shall be limited to the amounts paid by the Buyer for the Products or the fitting or service concerned. These terms do not affect the Buyer's statutory rights.

R&G RACING RETURNS POLICY (NON-FAULTY GOODS)

Returns must be pre-authorized (if not pre-authorized the return will be rejected). Goods may only be returned direct to us if they were purchased direct from us (customer must prove if necessary). Otherwise to be returned to original vendor. Goods must be in re-sellable condition, in the opinion of R&G Racing. All returns are subject to a 25% restocking and handling fee (25% of the gross value exc. P&P - at the prevailing price at time of purchase). The customer must pay any and all carriage charges. No returns of discontinued products, unless within 14 days of purchase. This policy does not affect your statutory rights and does not refer to faulty goods.

R&G Racing

Unit 1, Shelley's Lane, East Worldham, Alton, Hampshire, GU34 3AQ

Tel: +44 (0)1420 89007 Fax: +44 (0)1420 87301 www.rg-racing.com Email: info@rg-racing.com



MONTAGEANLEITUNG FÜR CP0526 AERO STURZPADS
DUCATI MONSTER 950 (PLUS) 2021-



ALLE KIT-TEILE SIND AUF DEN NACHFOLGENDEN SEITEN ABGEBILDET UND GEKENNZEICHNET.

DIE ABGEBILDETEN TEILE DIENEN LEDIGLICH ZUR ERKLÄRUNG.

ÜBERPRÜFEN SIE ZUERST, DASS ALLE TEILE VORHANDEN SIND.

LESEN SIE DIE MONTAGEANLEITUNG KOMPLETT DURCH, BEVOR SIE ANFANGEN.

**WENN SIE BEI DER MONTAGE DIESES PRODUKTES UNSICHER SIND, BITTE EINEN
UNSERER HÄNDLER KONTAKTIEREN ODER DAS KIT VON EINEM QUALIFIZIERTEN
ZWEIRAD-MECHANIKER MONTIEREN LASSEN.**

DIE VERPACKUNG DER TEILE STELLT NICHT DIE REIHENFOLGE DER MONTAGE DAR.

HINWEIS FÜR KITS MIT PLASTIKUNTERLEGSSCHEIBEN AN DEN SCHRAUBEN –
DIESE PLASTIK-UNTERLEGSSCHEIBEN WERDEN NICHT FÜR DEN EINBAU BENÖTIGT

**EINE DIGITALE VERSION DIESER MONTAGEANLEITUNG KANN AUF
FOLGENDER SEITE HERUNTERGELADEN WERDEN:**

WWW.RG-RACING.COM

R&G Racing

Unit 1, Shelley's Lane, East Worldham, Alton, Hampshire, GU34 3AQ

Tel: +44 (0)1420 89007 Fax: +44 (0)1420 87301 www.rg-racing.com Email: info@rg-racing.com



<u>SIE BENÖTIGEN FOLGENDES WERKZEUG</u>	<u>ALLGEM. ANZUGSDREHMOMENT</u>
<ul style="list-style-type: none"> • STECKSCHLÜSSELSATZ INKL. 15mm und 17mm STECKSCHLÜSSEL • DREHMOMENTSCHLÜSSEL (BIS 50Nm) • HEBER ODER MONTAGESTÄNDER 	M4 SCHRAUBE = 8Nm M5 SCHRAUBE = 12Nm M6 SCHRAUBE = 15Nm M8 SCHRAUBE = 20Nm M10 SCHRAUBE = 40Nm M12 SCHRAUBE = 40Nm

LIEFERUMFANG

ARTIKEL NR.	BESCHREIBUNG	MENGE
ARTIKEL 1	B0061 - AERO STURZPADS	2
ARTIKEL 2	BC0002 - STURZPAD-SCHUTZKAPPEN (BEIDE SEITEN)	2
ARTIKEL 3	S1357 - DISTANZHALTER STURZPAD RECHTE SEITE	1
ARTIKEL 4	S1358 - DISTANZHALTER STURZPAD LINKE SEITE	1
ARTIKEL 5	EB105 220MM VERBINDUNGSSTANGE (LINKE SEITE)	1
ARTIKEL 6	EB106 180MM VERBINDUNGSSTANGE (RECHTE SEITE)	1
ARTIKEL 7	M12 SELBSTSICHERNDE MUTTER	2
ARTIKEL 8	LW0001 ZAHNSCHEIBE	2
ARTIKEL 9	M12 UNTERLEGSCHIEBE	2

AERO-STURZPAD ORIENTIERUNG



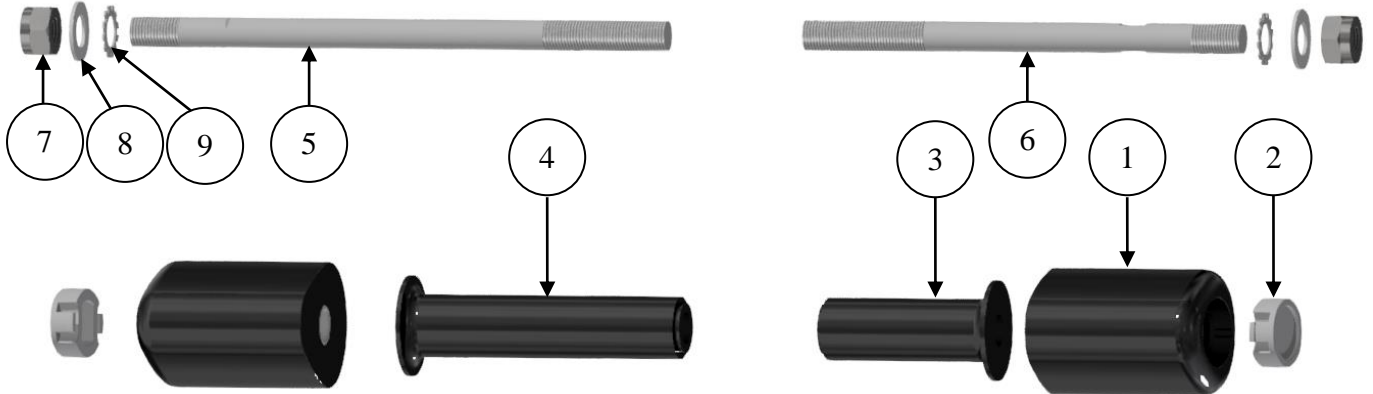
R&G Racing

Unit 1, Shelley's Lane, East Worldham, Alton, Hampshire, GU34 3AQ

Tel: +44 (0)1420 89007 Fax: +44 (0)1420 87301 www.rg-racing.com Email: info@rg-racing.com



LINKE & RECHTE SEITE EXPLOSIONSZEICHNUNG - ZUSAMMENBAU



MONTAGE ABILDUNGEN

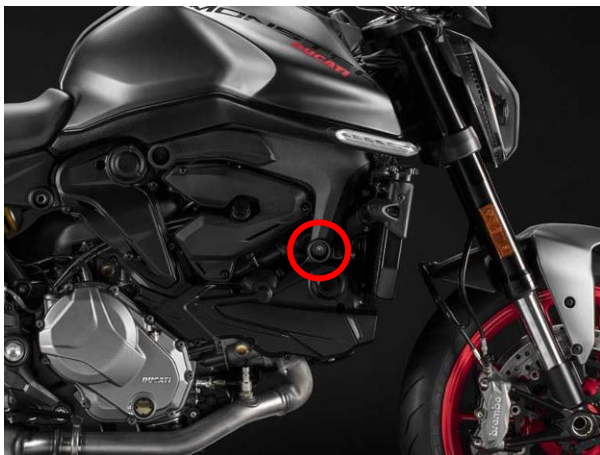


Abbildung 1

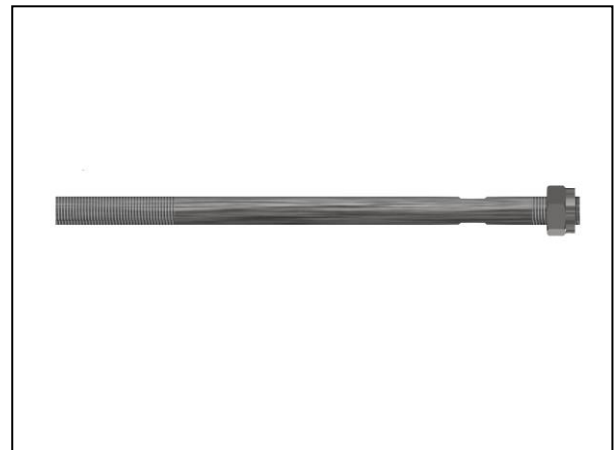


Abbildung 2



Abbildung 3



MONTAGEANLEITUNG

Bevor Sie die Schrauben für den Motor entfernen, stellen Sie sicher, dass das Motorrad aufrecht steht und der Motor mit einem geeigneten Ständer/Heber unterhalb der Ölwanne gestützt wird. Dies verhindert, dass der Motor sich bei der Entfernung von Motorschrauben bewegt. **WÄHREND DER INSTALLATION DÜRFEN DIE SCHRAUBEN FÜR DEN MOTOR NUR EINZELN UND NIE GLEICHZEITIG ENTFERNT WERDEN.**

VORBEREITUNG:

- Einen passenden Motorradheber oder Montageständer mittig unter den Motor stellen mit einem Stück Holz oder Kunststoff zwischen dem Motor und dem Ständer.
- Etwas Druck an der Unterseite des Motors anwenden, um den Motor während der Montage zu stützen

Die Sturz pads zusammenbauen, bevor Sie die Motorschrauben entfernen, sodass der Motor nur für eine kurze Zeit nicht vollständig gestützt ist.

- Die selbstsichernden Muttern (**ARTIKEL 7**) mit 20mm Gewinde am jeweiligen Ende der zwei Verbindungsstangen (**ARTIKEL 5/6**) anbringen. Sie können einen 10mm Schraubenschlüssel benutzen, um die Verbindungsstange dabei zu halten.
- Die Verbindungsstangen jeweils mit Mutter und Unterlegscheiben (**ARTIKEL 1**) gefolgt von den Distanzhaltern für die Sturz pads (**ARTIKEL 3/4**) in die Aero Sturz pads einsetzen.

MONTAGE:

- Entfernen Sie die Motorschraube wie in **Abbildung 1** abgebildet.
- Die Sturz pad-Einheit, die Sie vorher zusammengebaut haben, in die Montagehalterung einsetzen. Die M12 Verbindungsstange und Mutter in das Einschraubgewinde eindrehen, welche die Einheit festhalten wird.

HINWEIS: Um zu vermeiden, dass die Schraube sich verkantet, etwas Druck anwenden und die Schraube entgegen dem Uhrzeiger drehen bis Sie einen Klick hören, dann die Schraube rechtsherum drehen und befestigen.

- Benutzen Sie einen Drehmomentschlüssel mit einem 19mm Sockel montiert, um die Verbindungsstange und Mutter mit 45 NM zu befestigen. Eventuell müssen Sie das Sturz pad in Position halten, um zu verhindern, dass es sich während des Festziehens dreht.
- Wiederholen Sie diese Schritte an der anderen Seite des Motorrades und stellen Sie sicher, dass die Sturz pads ordnungsgemäß ausgerichtet sind. Bitte beachten Sie, dass die linke Seite länger ist als die rechte Seite, sodass die Sturz pads gleich positioniert sind am Motorrad.
- Wenn alles montiert ist, überprüfen Sie erneut die Drehmoment-Einstellungen und die Position/Orientierung der Sturz pads. Die Sturz pad-Kappen (**ARTIKEL 2**) anbringen und anschließend den Heber entfernen.

AUSGABE 1 - 09/09/2021 (WW)

CONSUMER NOTICE

The catalogue description and any exhibition of samples are only broad indications of the Products and R&G may make design changes which do not diminish their performance or visual appeal and supplying them in such state shall conform to the order. The Buyer acknowledges no representation or warranty (other than as to title) has been given or will apply to the Products other than those in R&G's order or confirmation and the Buyer confirms it has chosen the Products as being of merchantable quality and suitable for its particular purposes. Where R&G fits the Products or undertakes other services it shall exercise reasonable skill and care and rectify any fault free of charge unless the workmanship has been disturbed. The Buyer is responsible for ensuring that the warranty on the motorcycle is not affected by the fitting of the Products. On return of any defective Products R&G shall at its option either supply a replacement or refund the purchase money but shall not be liable if the Products have been modified or used or maintained otherwise than in accordance with R&G's or manufacturer's instructions and good engineering practice or if the defect arises from accident or neglect. Other than identified above and subject to R&G not limiting its liability for causing death and personal injury, it shall not be liable for indirect or consequential loss and otherwise its liability shall be limited to the amounts paid by the Buyer for the Products or the fitting or service concerned. These terms do not affect the Buyer's statutory rights.

R&G RACING RETURNS POLICY (NON-FAULTY GOODS)

Returns must be pre-authorized (if not pre-authorized the return will be rejected). Goods may only be returned direct to us if they were purchased direct from us (customer must prove if necessary). Otherwise to be returned to original vendor. Goods must be in re-sellable condition, in the opinion of R&G Racing. All returns are subject to a 25% restocking and handling fee (25% of the gross value exc. P&P - at the prevailing price at time of purchase). The customer must pay any and all carriage charges. No returns of discontinued products, unless within 14 days of purchase. This policy does not affect your statutory rights and does not refer to faulty goods.

R&G Racing

Unit 1, Shelley's Lane, East Worldham, Alton, Hampshire, GU34 3AQ

Tel: +44 (0)1420 89007 Fax: +44 (0)1420 87301 www.rg-racing.com Email: info@rg-racing.com