



**FITTING INSTRUCTIONS FOR CP0522 AERO CRASH PROTECTORS**  
**HONDA CB125R 2021-**



**THIS KIT CONTAINS THE ITEMS PICTURED AND LABELLED OVER PAGE.**

SOME PARTS MAY BE SHOWN FOR CLARITY OF INSTRUCTIONS ONLY.

DO NOT PROCEED UNTIL YOU ARE SURE ALL PARTS ARE PRESENT.

**PLEASE READ ALL INSTRUCTIONS BEFORE PROCEEDING.**

**IF IN ANY DOUBT WHEN FITTING OUR PRODUCTS, CONSULT ONE OF OUR DEALERS  
OR HAVE FITTED BY A QUALIFIED TECHNICIAN.**

PLEASE NOTE THAT THE WAY THE KIT IS PACKED DOES NOT NECESSARILY REPRESENT THE WAY OF  
MOUNTING TO THE BIKE.

IN THE EVENT OF RUBBER WASHERS BEING USED TO HOLD COMPONENTS ONTO BOLTS,  
THESE RUBBER WASHERS CAN BE THROWN AWAY.

**DIGITAL COPIES OF THESE INSTRUCTIONS ARE AVAILABLE FROM:**

[WWW.RG-RACING.COM](http://WWW.RG-RACING.COM)



<b><u>TOOLS REQUIRED</u></b>	<b><u>GENERAL TORQUE SETTINGS</u></b>
<ul style="list-style-type: none"> <li>• SOCKET &amp; WRENCH SET INCLUDING 13mm TO 17mm SOCKETS.</li> <li>• TORQUE WRENCH (UP TO 50Nm)</li> <li>• SUITABLE SUPPORT JACK</li> </ul>	<p>M4 BOLT = 8Nm  M5 BOLT = 12Nm  M6 BOLT = 15Nm  M8 BOLT = 20Nm  M10 BOLT = 40Nm  M12 BOLT = 40Nm</p>

### **LEGEND**

<b>ITEM NO.</b>	<b>DESCRIPTION</b>	<b>QTY</b>
ITEM 1	B0431 AERO BOBBINS (BOTH SIDES)	2
ITEM 2	BC0002 BOBBIN CAPS (BOTH SIDES)	2
ITEM 3	S1134 TWO Ø SPACER 57.6mm LONG (BLACK) (BOTH SIDES)	2
ITEM 4	EB102 (M10x375mm) ENGINE BAR	1
ITEM 5	M10x1.25 NYLOC NUTS (BOTH SIDES)	2
ITEM 6	M10 WASHERS 19mm OD	2
ITEM 7	LW0001 LOCKING WASHERS (BOTH SIDES)	2

### **AERO-STYLE CRASH PROTECTOR ORIENTATION**



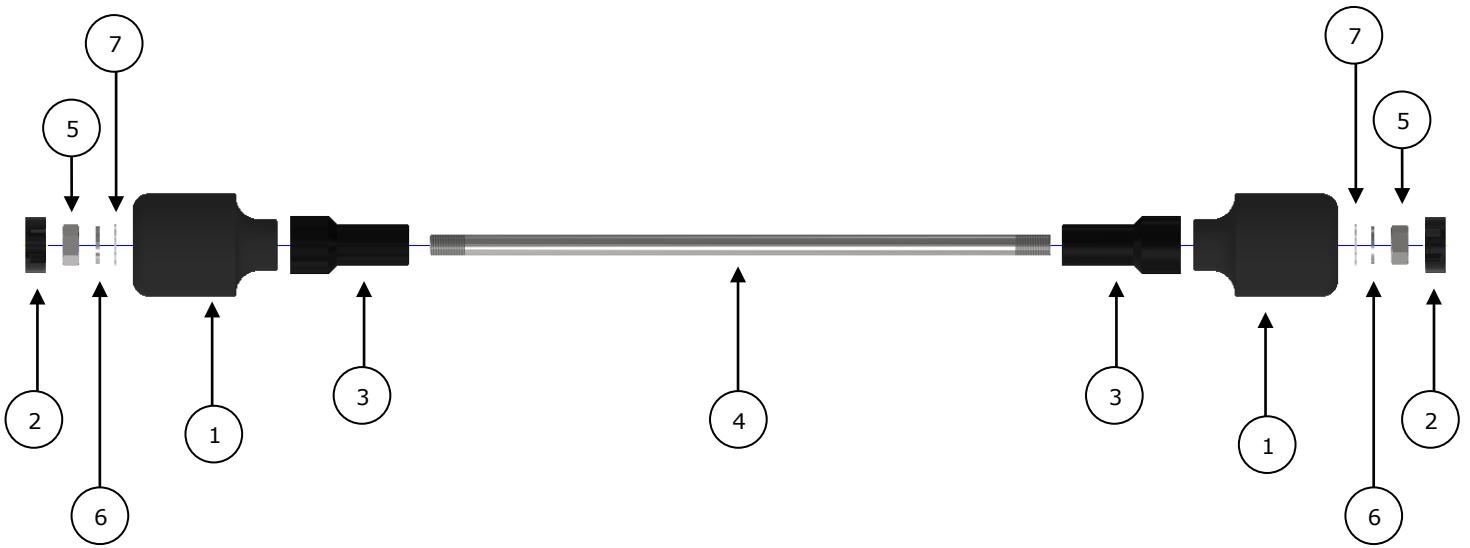
R&G Racing

Unit 1, Shelley's Lane, East Worldham, Alton, Hampshire, GU34 3AQ

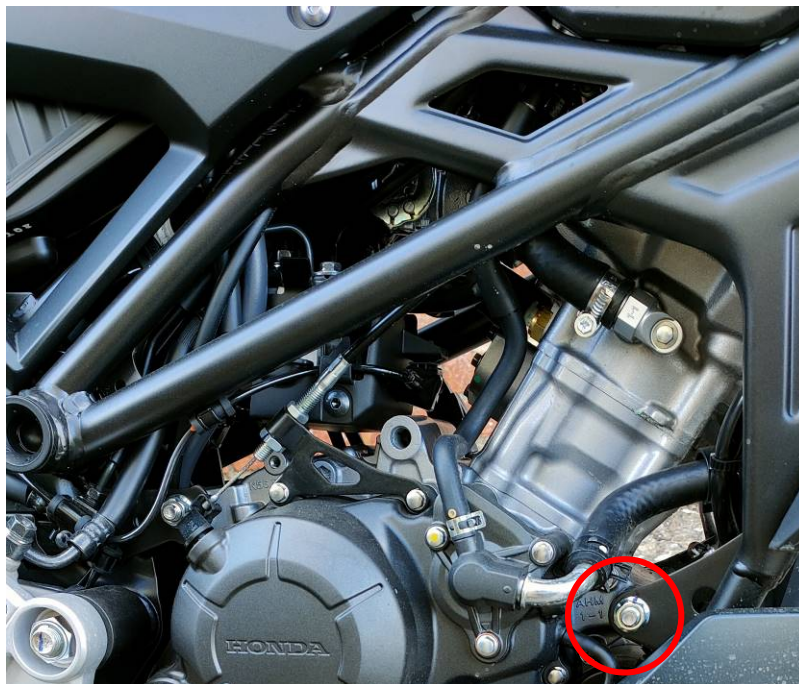
Tel: +44 (0)1420 89007 Fax: +44 (0)1420 87301 [www.rg-racing.com](http://www.rg-racing.com) Email: [info@rg-racing.com](mailto:info@rg-racing.com)



**EXPLODED ASSEMBLY VIEW**



**FITTING PICTURES**



Picture 1



## **FITTING INSTRUCTIONS**

**Before removing engine bolts, ensure the bike is upright and supported by a suitable engine stand or jack placed under the sump of the motorbike to support the partial weight of the engine, this will prevent the engine from moving during fitting.**

### **PREPARATION:**

- Place a suitable jack beneath the engine in a central position using a piece of wood or plastic between the jack and engine.
- Apply very light pressure to the underside of the engine to support the engine during the fitment process.

**Assemble the crash protectors before removing the engine bolts to limit the amount of time the engine is partially un-supported.**

- Place one of the nyloc nuts (**ITEM 5**) on the engine bar (**ITEM 4**), followed by a penny washer (**ITEM 6**) and shake proof washer (**ITEM 7**).
- Insert the engine bar (**ITEM 4**) with washers into the aero bobbin (**ITEM 1**) followed a spacer (**ITEM 3**), as shown in **Picture 2**.

### **INSTALLATION:**

- Remove the OEM engine mounting nut highlighted in **Picture 1**.
- Using the partially assembled engine bar (**ITEM 4**), push out the OEM engine mounting bolt until the inner face of the spacer (**ITEM 3**) is touching the frame.

**NOTE: To avoid cross threading apply forward pressure to the bolt and rotate counter-clockwise until a click is heard then begin to turn clockwise & tighten.**

- Now to assemble the LHS, slide the remaining spacer (**ITEM 3**) onto the engine bar (**ITEM 4**), followed by the remaining aero bobbin (**ITEM 1**), next the locking washer (**ITEM 7**) and lastly the penny washer (**ITEM 6**).
- To secure the bobbin in place, wind on the remaining nyloc nut (ITEM Using a torque wrench, tighten the bolt to 45 Nm. You may need to hold the bobbin in position to prevent it turning while tightening the bolt.
- Once completed, double check torque settings & the position/orientation of the bobbins then push the bobbin caps (**ITEM 2**) into place then remove the jack.

ISSUE 1 - 16/08/2021 (AO)



### **CONSUMER NOTICE**

The catalogue description and any exhibition of samples are only broad indications of the Products and R&G may make design changes which do not diminish their performance or visual appeal and supplying them in such state shall conform to the order. The Buyer acknowledges no representation or warranty (other than as to title) has been given or will apply to the Products other than those in R&G's order or confirmation and the Buyer confirms it has chosen the Products as being of merchantable quality and suitable for its particular purposes. Where R&G fits the Products or undertakes other services it shall exercise reasonable skill and care and rectify any fault free of charge unless the workmanship has been disturbed. The Buyer is responsible for ensuring that the warranty on the motorcycle is not affected by the fitting of the Products. On return of any defective Products R&G shall at its option either supply a replacement or refund the purchase money but shall not be liable if the Products have been modified or used or maintained otherwise than in accordance with R&G's or manufacturer's instructions and good engineering practice or if the defect arises from accident or neglect. Other than identified above and subject to R&G not limiting its liability for causing death and personal injury, it shall not be liable for indirect or consequential loss and otherwise its liability shall be limited to the amounts paid by the Buyer for the Products or the fitting or service concerned. These terms do not affect the Buyer's statutory rights.

### **R&G RACING RETURNS POLICY (NON-FAULTY GOODS)**

Returns must be pre-authorized (if not pre-authorized the return will be rejected). Goods may only be returned direct to us if they were purchased direct from us (customer must prove if necessary). Otherwise to be returned to original vendor. Goods must be in re-sellable condition, in the opinion of R&G Racing. All returns are subject to a 25% restocking and handling fee (25% of the gross value exc. P&P – at the prevailing price at time of purchase). The customer must pay any and all carriage charges. No returns of discontinued products, unless within 14 days of purchase. This policy does not affect your statutory rights and does not refer to faulty goods.

R&G Racing

Unit 1, Shelley's Lane, East Worldham, Alton, Hampshire, GU34 3AQ

Tel: +44 (0)1420 89007 Fax: +44 (0)1420 87301 [www.rg-racing.com](http://www.rg-racing.com) Email: [info@rg-racing.com](mailto:info@rg-racing.com)



**NOTICE DE MONTAGE POUR CP0522 PROTECTIONS CRASH**  
**HONDA CB125R 2021-**



**CE KIT CONTIENT LES ARTICLES ILLUSTRÉS ET ÉTIQUETES SUR LA PAGE.**

CERTAINES PARTIES PEUVENT ÊTRE PRÉSENTES UNIQUEMENT POUR LA CLARTÉ DES INSTRUCTIONS.

NE PAS PROCÉDER AU MONTAGE TANT QUE VOUS N'ÊTES PAS SÛR QUE TOUTES LES PIÈCES SOIENT PRÉSENTES.

**VEUILLEZ LIRE TOUTES LES INSTRUCTIONS AVANT DE CONTINUER.**

**EN CAS DE DOUTE LORS DU MONTAGE DE NOS PRODUITS, CONSULTEZ UN DE NOS REVENDEURS OU FAITES APPEL À UN TECHNICIEN QUALIFIÉ.**

VEUILLEZ NOTER QUE LA FAÇON DONT LE KIT EST EMBALLÉ NE REPRÉSENTE PAS NECESSAIREMENT LA MANIÈRE DE LE MONTER SUR LA MOTO.

SI DES RONDELLES EN CAOUTCHOUC SONT UTILISÉES POUR MAINTENIR LES COMPOSANTS SUR LES BOULONS, ELLES PEUVENT ÊTRE JETÉES.

**NOTICE DISPONIBLE AU TÉLÉCHARGEMENT SUR : [WWW.RG-RACING.COM](http://WWW.RG-RACING.COM)**





<b><u>OUTILS REQUIS</u></b>	<b><u>VALEURS DE SERRAGE</u></b>
<ul style="list-style-type: none"> <li>• CLÉ À CLIQUET + DOUILLES 13mm À 17mm</li> <li>• CLÉ DYNAMOMÉTRIQUE (À 50Nm)</li> <li>• RISE ADAPTÉE POUR SUPPORTER LE MOTEUR</li> </ul>	M4 BOULON = 8Nm M5 BOULON = 12Nm M6 BOULON = 15Nm M8 BOULON = 20Nm M10 BOULON = 40Nm M12 BOULON = 40Nm

### **LÉGENDE**

<b>ARTICLE NO.</b>	<b>DESCRIPTION</b>	<b>QTÉ</b>
ARTICLE 1	B0431 PROTECTIONS CRASH (DES 2 CÔTÉS)	2
ARTICLE 2	BC0002 CAPUCHONS DE PROTECTION CRASH (DES 2 CÔTÉS)	2
ARTICLE 3	S1134 x2 Ø ENTRETOISE 57.6mm DE LONG (NOIR) (DES 2 CÔTÉS)	2
ARTICLE 4	EB102 (M10x375mm) BARRE MOTEUR	1
ARTICLE 5	M10x1.25 ÉCROUS (DES 2 CÔTÉS)	2
ARTICLE 6	M10 RONDELLES 19mm OD	2
ARTICLE 7	LW0001 RONDELLES DE BLOCAGE (DES 2 CÔTÉS)	2

### **ORIENTATION DE LA PROTECTION CRASH**



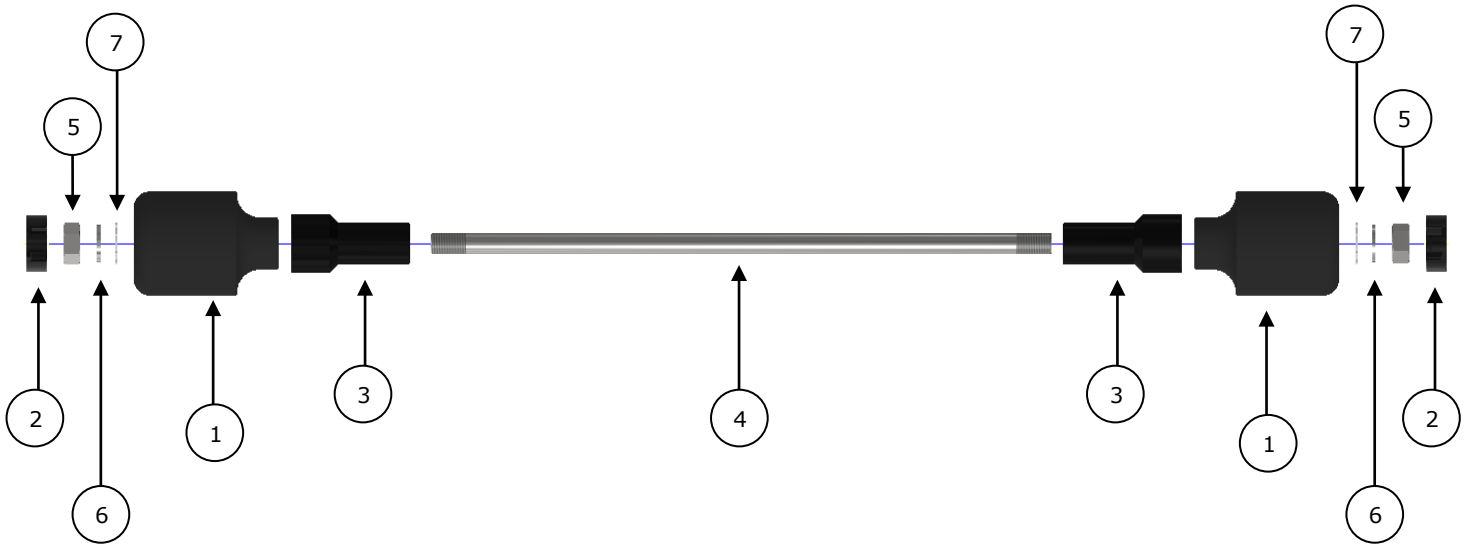
R&G Racing

Unit 1, Shelley's Lane, East Worldham, Alton, Hampshire, GU34 3AQ

Tel: +44 (0)1420 89007 Fax: +44 (0)1420 87301 [www.rg-racing.com](http://www.rg-racing.com) Email: [info@rg-racing.com](mailto:info@rg-racing.com)



**VUE D'ENSEMBLE**



**PHOTOS DE MONTAGE**

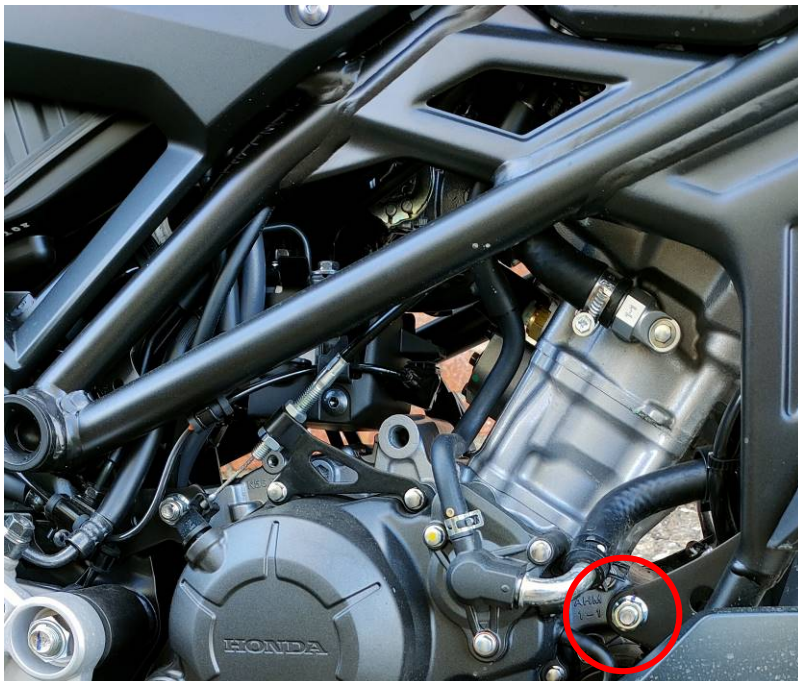


Photo 1





## **NOTICE DE MONTAGE**

**Avant de retirer les boulons du moteur, assurez-vous que la moto soit droite et soutenue par un support moteur ou un cric approprié placé sous le carter de la moto pour supporter le poids partiel du moteur, cela empêchera le moteur de bouger pendant le montage.**

### **PRÉPARATION:**

- Placez un cric approprié sous le moteur dans une position centrale en utilisant un morceau de bois ou de plastique entre le cric et le moteur.
- Appliquez une très légère pression sur le dessous du moteur pour soutenir le moteur pendant le processus de montage.

**Assemblez les protections crash avant de retirer les boulons du moteur pour limiter la durée pendant laquelle le moteur est partiellement non soutenue.**

- Placer un des écrous (ARTICLE 5) sur la barre du moteur (ARTICLE 4), suivi d'une rondelle (ARTICLE 6) et d'une rondelle anti-vibration (ARTICLE 7).
- Insérez la barre moteur (ARTICLE 4) avec les rondelles dans la protection crash (ARTICLE 1) suivie d'une entretoise (ARTICLE 3), comme indiqué sur la photo 2.

### **INSTALLATION:**

- Retirez l'écrou de fixation du moteur d'origine mis en évidence sur la photo 1.
- À l'aide de la barre de moteur partiellement assemblée (ARTICLE 4), poussez le boulon de fixation du moteur d'origine jusqu'à ce que la face intérieure de l'entretoise (ARTICLE 3) touche le cadre.

**NOTE: To avoid cross threading apply forward pressure to the bolt and rotate counter-clockwise until a click is heard then begin to turn clockwise & tighten.**

- Maintenant pour assembler le côté gauche, faites glisser l'entretoise restante (ARTICLE 3) sur la barre moteur (ARTICLE 4), suivie de la bobine aérodynamique restante (ARTICLE 1), à côté de la rondelle de blocage (ARTICLE 7) et enfin de la rondelle (ARTICLE 6).
- Pour fixer la protection en place, enroulez l'écrou restant (ARTICLE 5) à l'aide d'une clé dynamométrique, serrez le boulon à 45 Nm. Vous devrez peut-être maintenir la protection en position pour l'empêcher de tourner pendant le serrage du boulon.
- Une fois terminé, vérifiez les réglages de couple et la position/orientation des protections, puis poussez les capuchons de protection (ARTICLE 2) en place puis retirez le cric.

ISSUE 1 - 16/08/2021 (AO)



### **CONSUMER NOTICE**

The catalogue description and any exhibition of samples are only broad indications of the Products and R&G may make design changes which do not diminish their performance or visual appeal and supplying them in such state shall conform to the order. The Buyer acknowledges no representation or warranty (other than as to title) has been given or will apply to the Products other than those in R&G's order or confirmation and the Buyer confirms it has chosen the Products as being of merchantable quality and suitable for its particular purposes. Where R&G fits the Products or undertakes other services it shall exercise reasonable skill and care and rectify any fault free of charge unless the workmanship has been disturbed. The Buyer is responsible for ensuring that the warranty on the motorcycle is not affected by the fitting of the Products. On return of any defective Products R&G shall at its option either supply a replacement or refund the purchase money but shall not be liable if the Products have been modified or used or maintained otherwise than in accordance with R&G's or manufacturer's instructions and good engineering practice or if the defect arises from accident or neglect. Other than identified above and subject to R&G not limiting its liability for causing death and personal injury, it shall not be liable for indirect or consequential loss and otherwise its liability shall be limited to the amounts paid by the Buyer for the Products or the fitting or service concerned. These terms do not affect the Buyer's statutory rights.

### **R&G RACING RETURNS POLICY (NON-FAULTY GOODS)**

Returns must be pre-authorized (if not pre-authorized the return will be rejected). Goods may only be returned direct to us if they were purchased direct from us (customer must prove if necessary). Otherwise to be returned to original vendor. Goods must be in re-sellable condition, in the opinion of R&G Racing. All returns are subject to a 25% restocking and handling fee (25% of the gross value exc. P&P – at the prevailing price at time of purchase). The customer must pay any and all carriage charges. No returns of discontinued products, unless within 14 days of purchase. This policy does not affect your statutory rights and does not refer to faulty goods.

R&G Racing

Unit 1, Shelley's Lane, East Worldham, Alton, Hampshire, GU34 3AQ

Tel: +44 (0)1420 89007 Fax: +44 (0)1420 87301 [www.rg-racing.com](http://www.rg-racing.com) Email: [info@rg-racing.com](mailto:info@rg-racing.com)



**MONTAGEANLEITUNG FÜR CP0522 STURZPADS**  
**HONDA CB125R 2021-**



**ALLE KIT-TEILE SIND AUF DEN NACHFOLGENDEN SEITEN ABGEBILDET UND GEKENNZEICHNET.**

DIE ABGEBILDETEN TEILE DIENEN LEDIGLICH ZUR ERKLÄRUNG.

ÜBERPRÜFEN SIE ZUERST, DASS ALLE TEILE VORHANDEN SIND.

**LESEN SIE DIE MONTAGEANLEITUNG KOMPLETT DURCH, BEVOR SIE ANFANGEN.**

**WENN SIE BEI DER MONTAGE DIESES PRODUKTES UNSICHER SIND, BITTE EINEN UNSERER HÄNDLER KONTAKTIEREN ODER DAS KIT VON EINEM QUALIFIZIERTEN ZWEIRAD-MECHANIKER MONTIEREN LASSEN.**

DIE VERPACKUNG DER TEILE STELLT NICHT DIE REIHENFOLGE DER MONTAGE DAR.

HINWEIS FÜR KITS MIT PLASTIKUNTERLEGSSCHEIBEN AN DEN SCHRAUBEN –  
DIESE PLASTIK-UNTERLEGSSCHEIBEN WERDEN NICHT FÜR DEN EINBAU BENÖTIGT!

**EINE DIGITALE VERSION DIESER MONTAGEANLEITUNG KANN AUF FOLGENDER SEITE HERUNTERGELADEN WERDEN:**

[WWW.RG-RACING.COM](http://WWW.RG-RACING.COM)

R&G Racing

Unit 1, Shelley's Lane, East Worldham, Alton, Hampshire, GU34 3AQ

Tel: +44 (0)1420 89007 Fax: +44 (0)1420 87301 [www.rg-racing.com](http://www.rg-racing.com) Email: [info@rg-racing.com](mailto:info@rg-racing.com)



<b><u>SIE BENÖTIGEN FOLGENDES WERKZEUG</u></b>	<b><u>ALLGEM. ANZUGSDREHMOMENT</u></b>
<ul style="list-style-type: none"> <li>SATZ STECKSCHLÜSSEL INKL. 13mm BIS 17mm STECKSCHLÜSSEL</li> <li>DREHMOMENTSCHLÜSSEL (BIS 50Nm)</li> <li>MONTAGESTÄNDER / HEBER</li> </ul>	M4 SCHRAUBE = 8Nm M5 SCHRAUBE = 12Nm M6 SCHRAUBE = 15Nm M8 SCHRAUBE = 20Nm M10 SCHRAUBE = 40Nm M12 SCHRAUBE = 40Nm

### **LIEFERUMFANG**

<b>ARTIKEL NR.</b>	<b>BESCHREIBUNG</b>	<b>MENGE</b>
ARTIKEL 1	B0431 AERO STURZPADS (BEIDE SEITEN)	2
ARTIKEL 2	BC0002 STURZPAD-KAPPEN (BEIDE SEITEN)	2
ARTIKEL 3	S1134 ZWEI Ø DISTANHALTER 57,6mm LÄNGE (SCHWARZ) (BEIDE SEITEN)	2
ARTIKEL 4	EB102 (M10x375mm) VERBINDUNGSSTANGE	1
ARTIKEL 5	M10x1.25 SELBSTSICHERNDE MUTTER (BEIDE SEITEN)	2
ARTIKEL 6	M10 UNTERLEGSCHIEBE 19mm OD	2
ARTIKEL 7	LW0001 ZAHNSCHIEBE (BEIDE SEITEN)	2

### **AERO STURZPAD - ORIENTIERUNG**



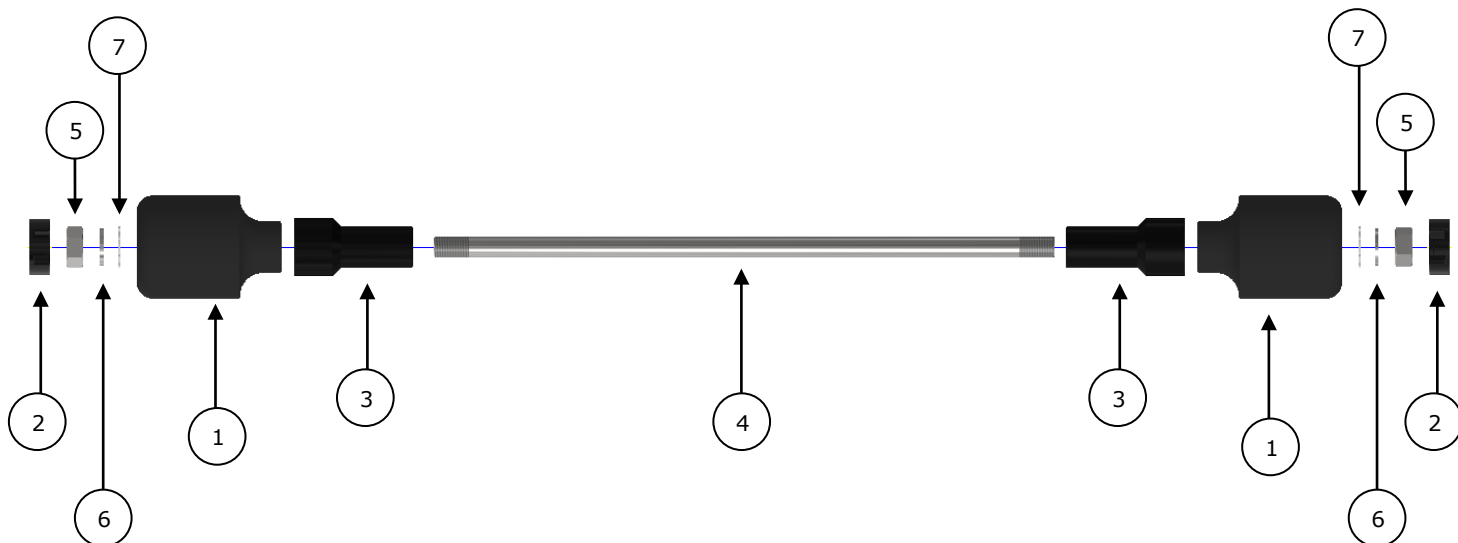
R&G Racing

Unit 1, Shelley's Lane, East Worldham, Alton, Hampshire, GU34 3AQ

Tel: +44 (0)1420 89007 Fax: +44 (0)1420 87301 [www.rg-racing.com](http://www.rg-racing.com) Email: [info@rg-racing.com](mailto:info@rg-racing.com)



## EXPLOSIONSZEICHNUNG - ZUSAMMENBAU



## MONTAGE - ABBILDUNGEN

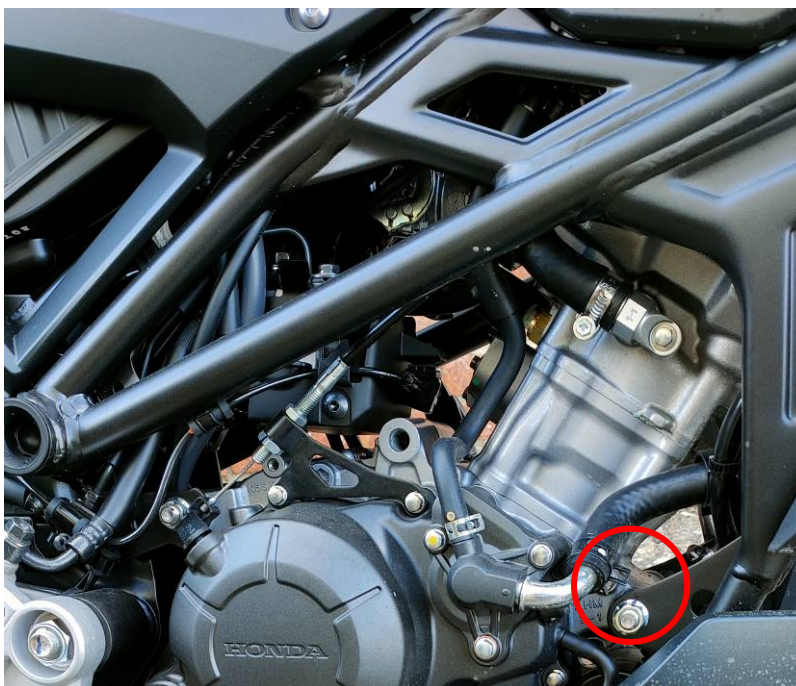


Abbildung 1

## MONTAGEANLEITUNG

Bevor Sie die Schrauben für den Motor entfernen, stellen Sie sicher, dass das Motorrad aufrecht steht und der Motor mit einem geeigneten Ständer/Heber unterhalb der Ölwanne gestützt wird. Dies verhindert, dass der Motor sich bei der Entfernung von Motorschrauben bewegt.



### **VORBEREITUNG:**

- Stellen Sie einen passenden Motorradheber oder Montageständer mittig unter den Motor (mit einem Stück Holz oder Kunststoff zwischen dem Motor und dem Ständer).
- Ein kleines bisschen Druck an der Unterseite des Motors anwenden, um den Motor während der Montage zu stützen.

**Die Sturz pads zusammenbauen, bevor Sie die Motorschrauben entfernen, sodass der Motor nur für eine kurze Zeit nicht vollständig gestützt ist.**

- Eine selbstsichernde Mutter (**ARTIKEL 5**) gefolgt von einer Unterlegscheibe (**ARTIKEL 6**) und danach eine Zahnscheibe (**ARTIKEL 7**) an der Verbindungsstange (**ARTIKEL 4**) anbringen.
- Die Verbindungsstange (**ARTIKEL 4**) mit den Unterlegscheiben gefolgt vom Distanzhalter (**ARTIKEL 3**) in das Sturzpad (**ARTIKEL 1**) einführen.

### **MONTAGE:**

- Entfernen Sie die original Befestigungsmutter, die in (**Abbildung 1**) gekennzeichnet ist.
- Benutzen Sie die zum Teil zusammengebaute Verbindungsstange (**ARTIKEL 4**), um die original Montageschraube rauszuschieben, bis die innere Fläche des Distanzhalters (**ARTIKEL 3**) den Rahmen berührt.

**HINWEIS: Um zu vermeiden, dass die Schraube sich verkantet, etwas Druck nach vorne anwenden und die Schraube entgegen dem Uhrzeiger drehen bis Sie einen Klick hören, dann die Schraube rechtsherum drehen und befestigen.**

- Jetzt die linke Seite zusammenbauen: Zuerst den übrigen Distanzhalter (**ARTIKEL 3**) an der Verbindungsstange (**ARTIKEL 4**) gefolgt vom übrigen Aero Sturzpad (**ARTIKEL 1**) montieren. Danach die Zahnscheibe montieren (**ARTIKEL 7**) und anschließend die Unterlegscheibe (**ARTIKEL 6**) anbringen.
- Um das Sturzpad in Position zu befestigen, die übrige selbstsichernde Mutter (**ARTIKEL 5**) montieren und mit einem Drehmomentschlüssel die Schraube mit 45 NM festziehen. Eventuell müssen Sie das Sturzpad in Position festhalten, um zu vermeiden, dass es sich dreht während Sie die Schrauben befestigen.
- Wenn alles montiert ist, überprüfen Sie erneut die Drehmoment-Einstellungen und die Position/Orientierung der Sturz pads. Die Sturzpad-Kappen (**ARTIKEL 2**) anbringen und anschließend den Heber entfernen.

AUSGABE 1 - 16/08/2021 (AO)

#### **CONSUMER NOTICE**

The catalogue description and any exhibition of samples are only broad indications of the Products and R&G may make design changes which do not diminish their performance or visual appeal and supplying them in such state shall conform to the order. The Buyer acknowledges no representation or warranty (other than as to title) has been given or will apply to the Products other than those in R&G's order or confirmation and the Buyer confirms it has chosen the Products as being of merchantable quality and suitable for its particular purposes. Where R&G fits the Products or undertakes other services it shall exercise reasonable skill and care and rectify any fault free of charge unless the workmanship has been disturbed. The Buyer is responsible for ensuring that the warranty on the motorcycle is not affected by the fitting of the Products. On return of any defective Products R&G shall at its option either supply a replacement or refund the purchase money but shall not be liable if the Products have been modified or used or maintained otherwise than in accordance with R&G's or manufacturer's instructions and good engineering practice or if the defect arises from accident or neglect. Other than identified above and subject to R&G not limiting its liability for causing death and personal injury, it shall not be liable for indirect or consequential loss and otherwise its liability

R&G Racing

Unit 1, Shelley's Lane, East Worldham, Alton, Hampshire, GU34 3AQ

Tel: +44 (0)1420 89007 Fax: +44 (0)1420 87301 [www.rg-racing.com](http://www.rg-racing.com) Email: [info@rg-racing.com](mailto:info@rg-racing.com)





shall be limited to the amounts paid by the Buyer for the Products or the fitting or service concerned. These terms do not affect the Buyer's statutory rights.

**R&G RACING RETURNS POLICY (NON-FAULTY GOODS)**

Returns must be pre-authorized (if not pre-authorized the return will be rejected). Goods may only be returned direct to us if they were purchased direct from us (customer must prove if necessary). Otherwise to be returned to original vendor. Goods must be in re-sellable condition, in the opinion of R&G Racing. All returns are subject to a 25% restocking and handling fee (25% of the gross value exc. P&P – at the prevailing price at time of purchase). The customer must pay any and all carriage charges. No returns of discontinued products, unless within 14 days of purchase. This policy does not affect your statutory rights and does not refer to faulty goods.

R&G Racing

Unit 1, Shelley's Lane, East Worldham, Alton, Hampshire, GU34 3AQ

Tel: +44 (0)1420 89007 Fax: +44 (0)1420 87301 [www.rg-racing.com](http://www.rg-racing.com) Email: [info@rg-racing.com](mailto:info@rg-racing.com)