

ORACLE LIGHTING

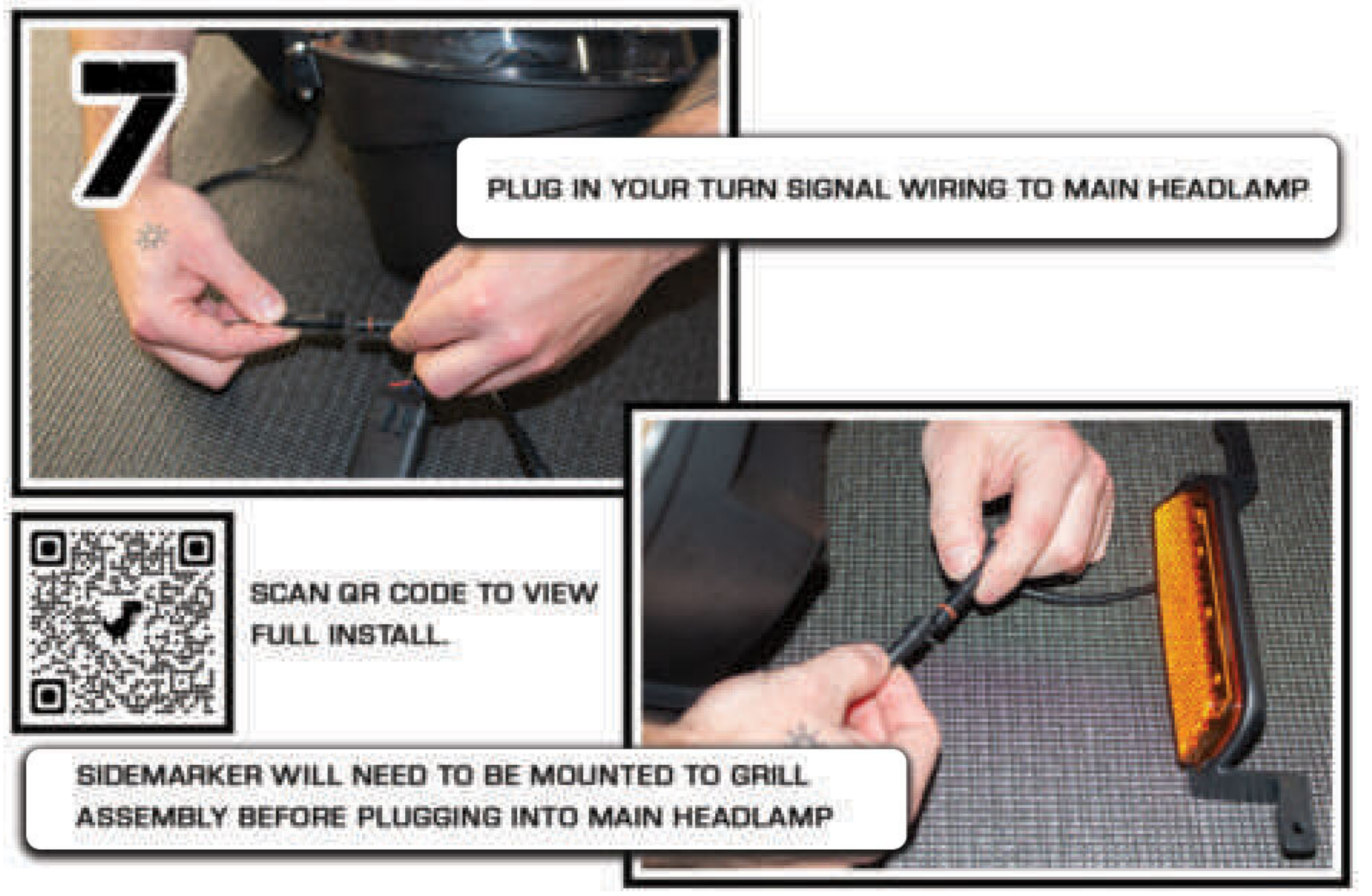
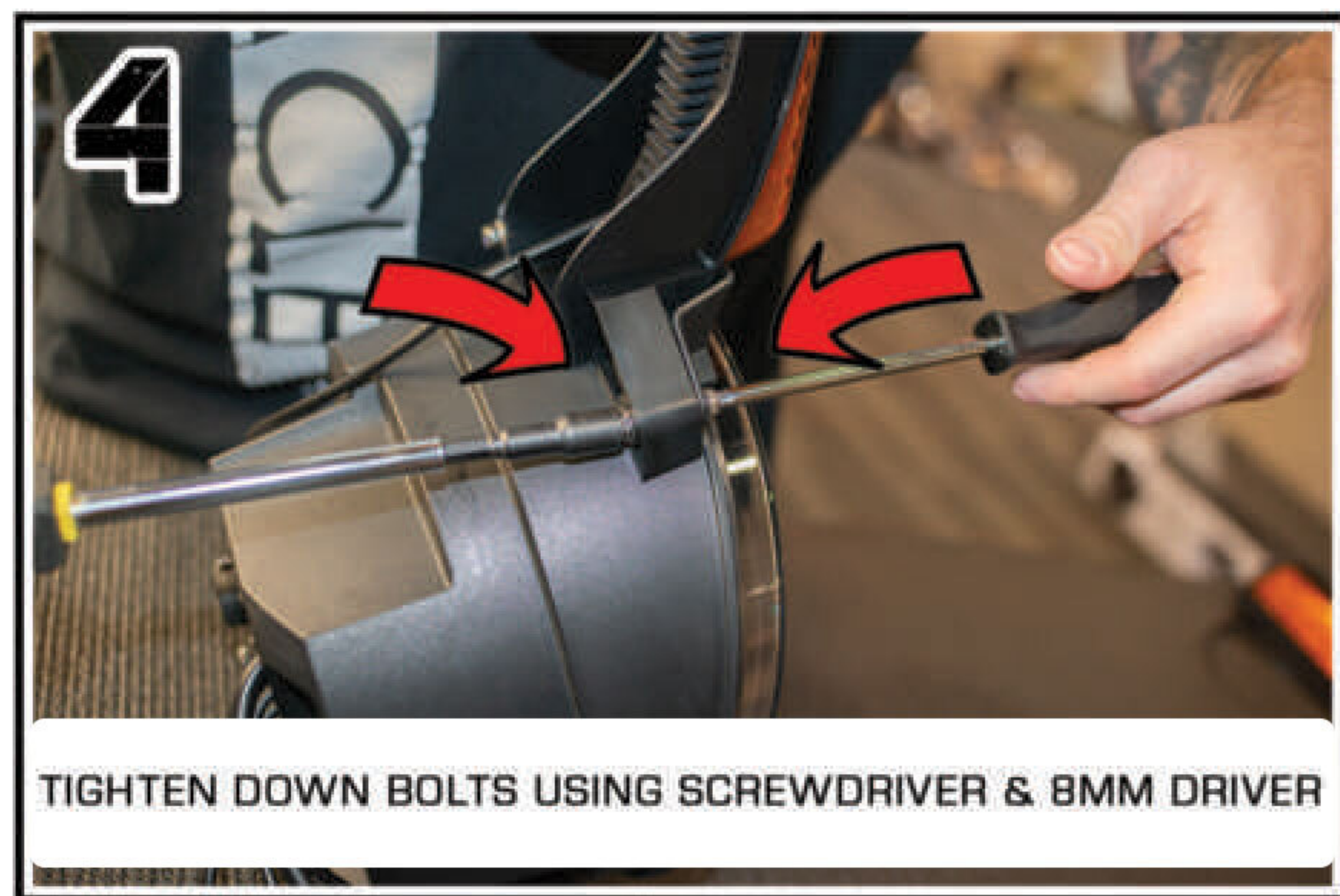
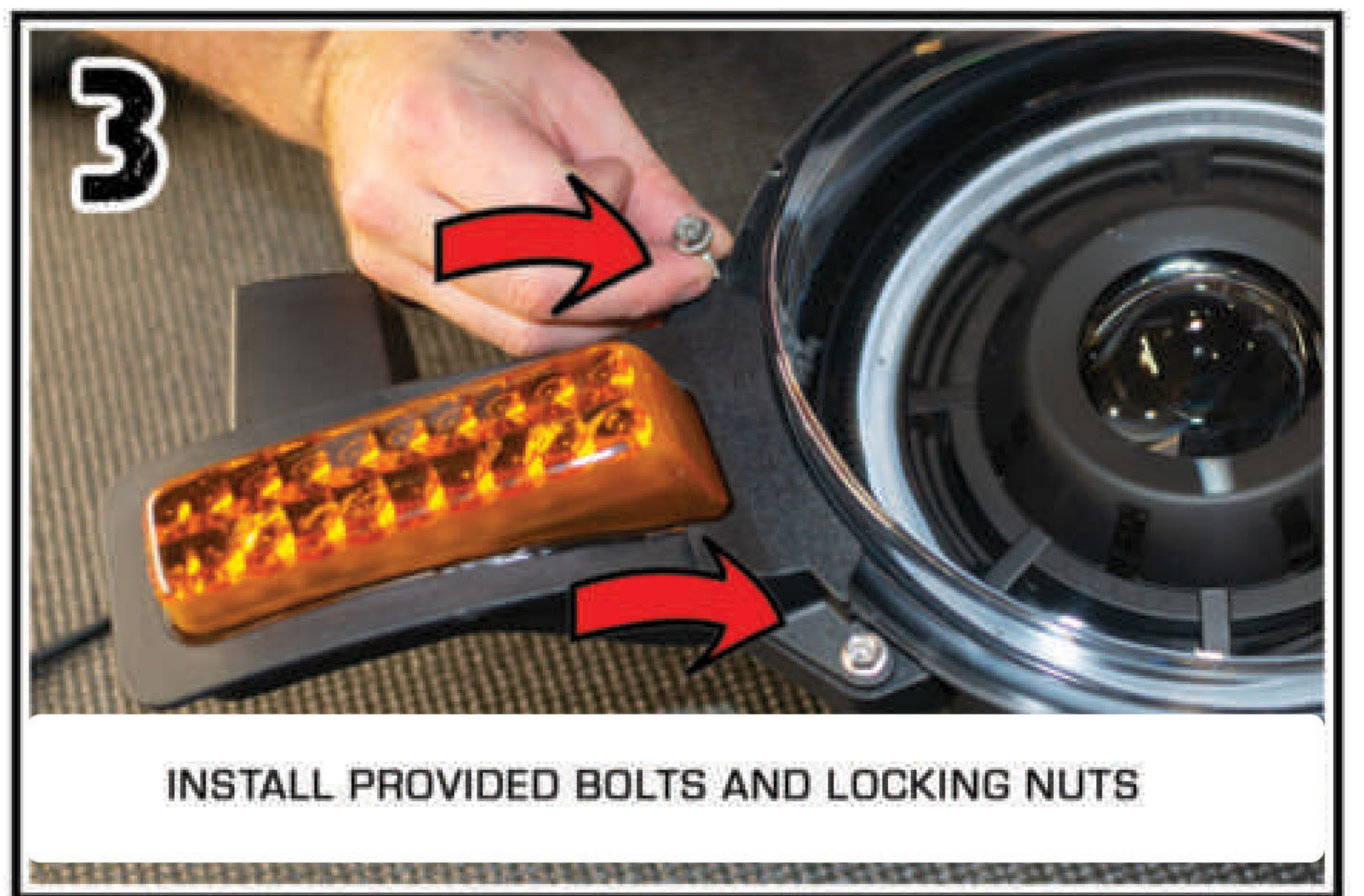
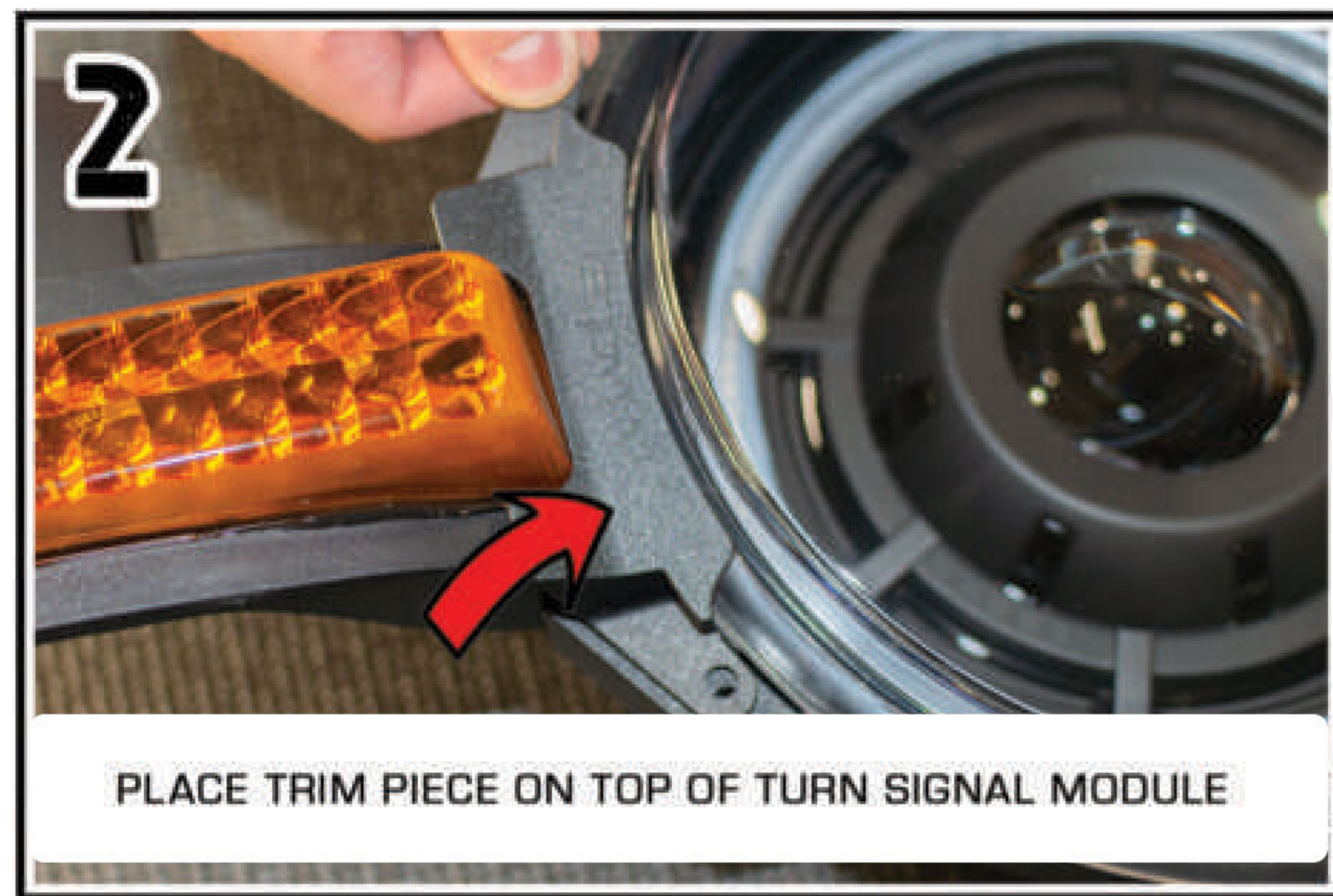
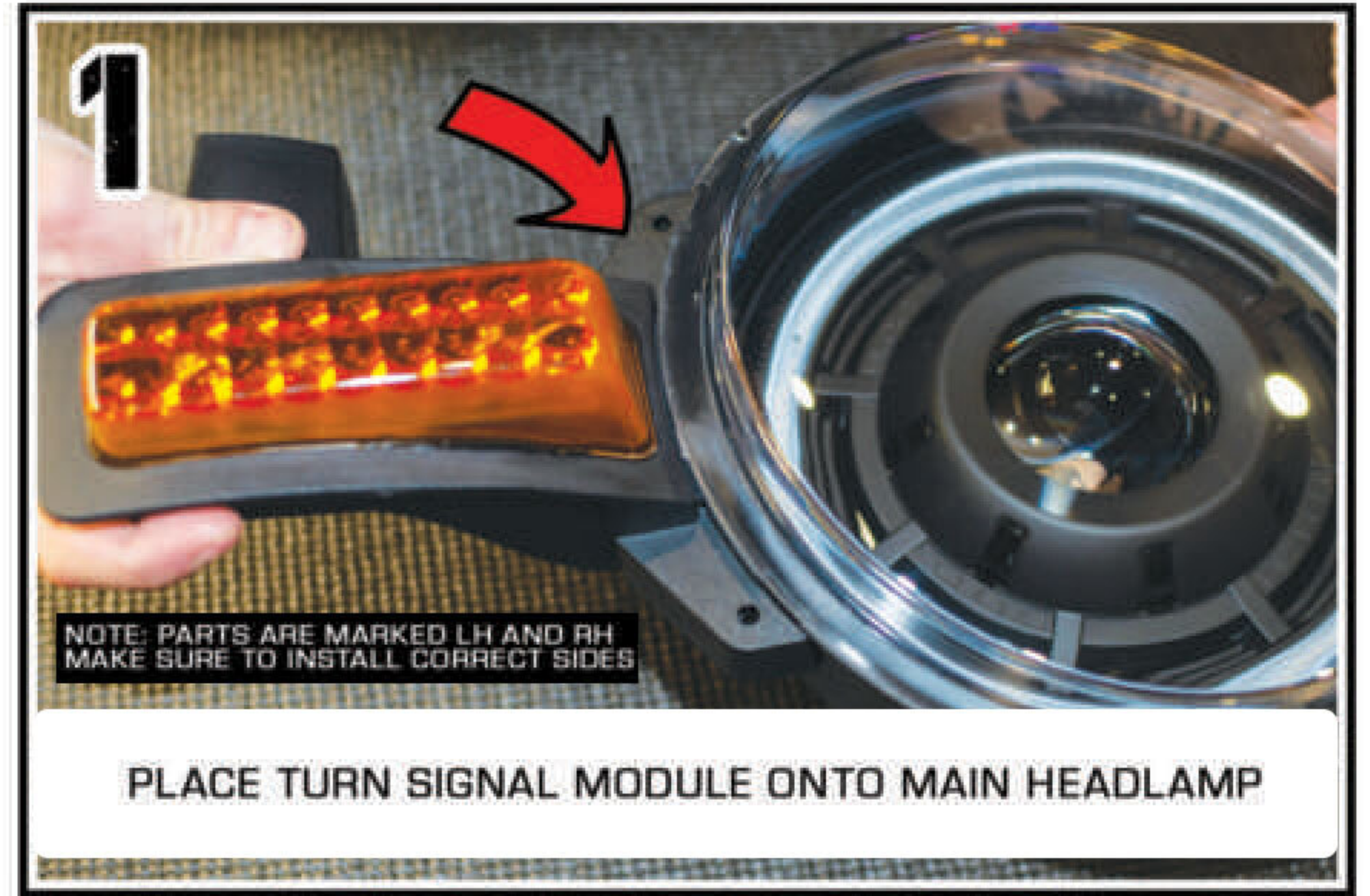
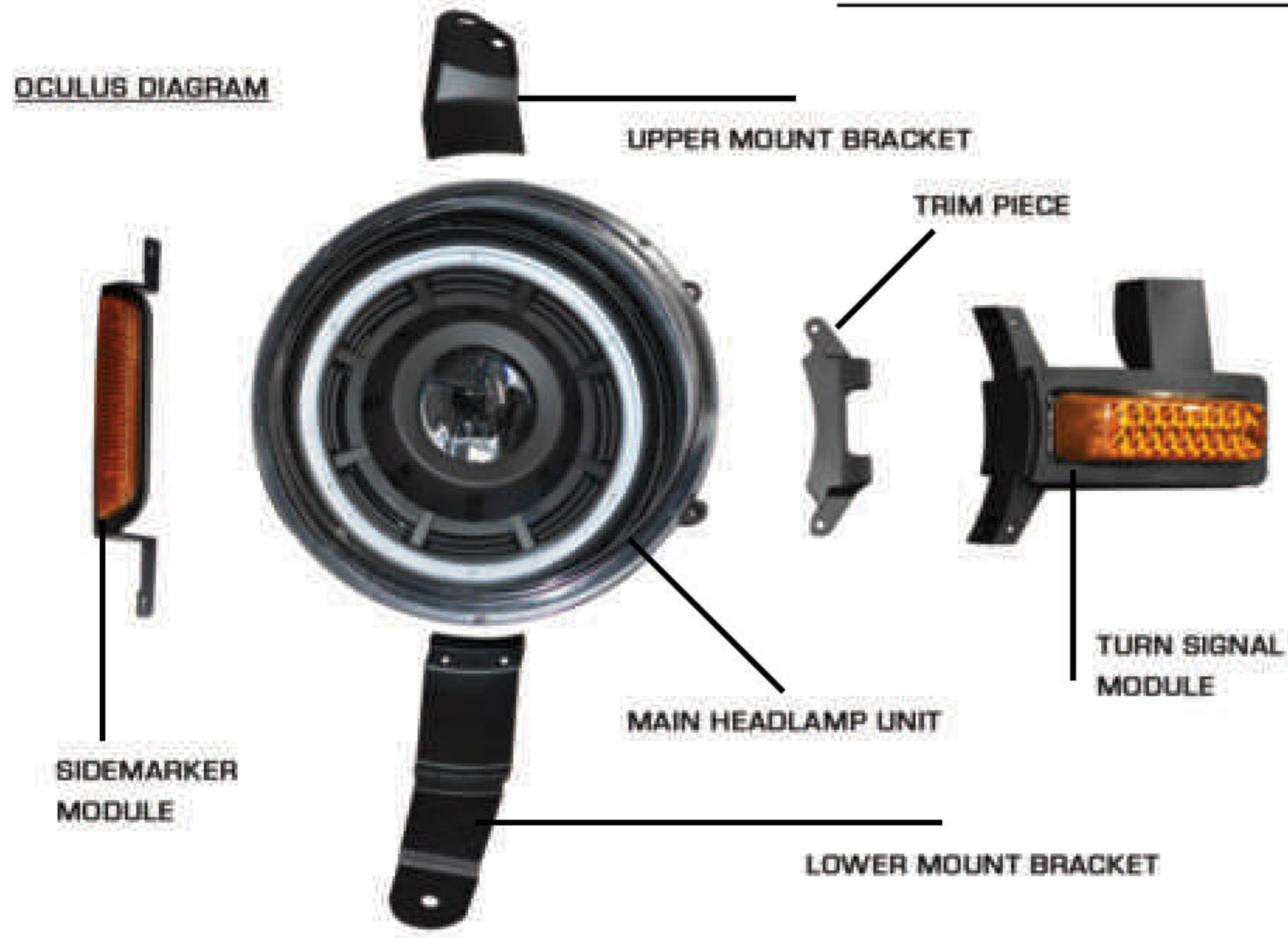
OCULUS FOR BRONCO

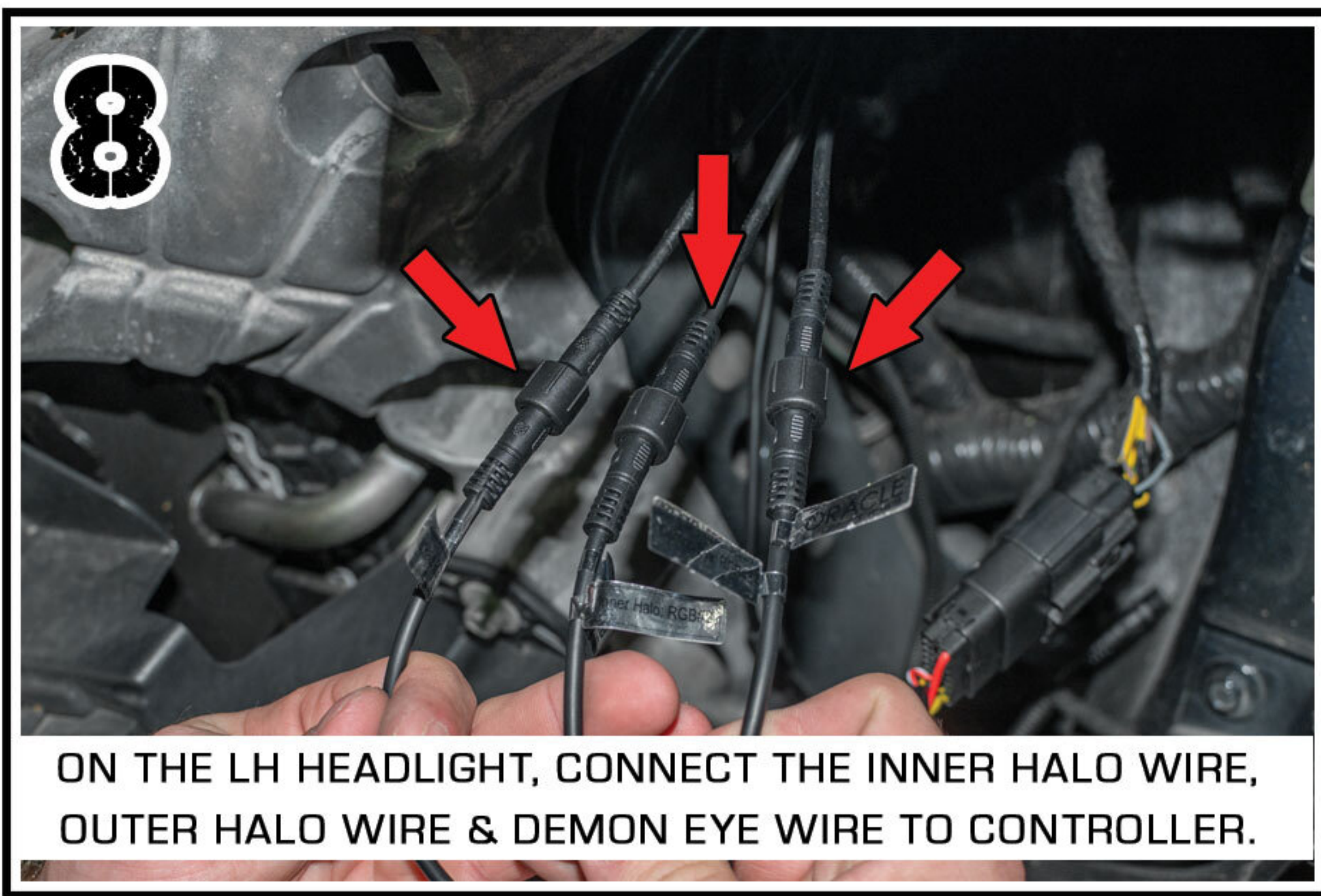
ORACLE PART #5886

HEADLIGHT ASSEMBLY GUIDE

TOOLS NEEDED:
 PHILLIPS HEAD SCREWDRIVER
 8MM NUT DRIVER

OCULUS DIAGRAM

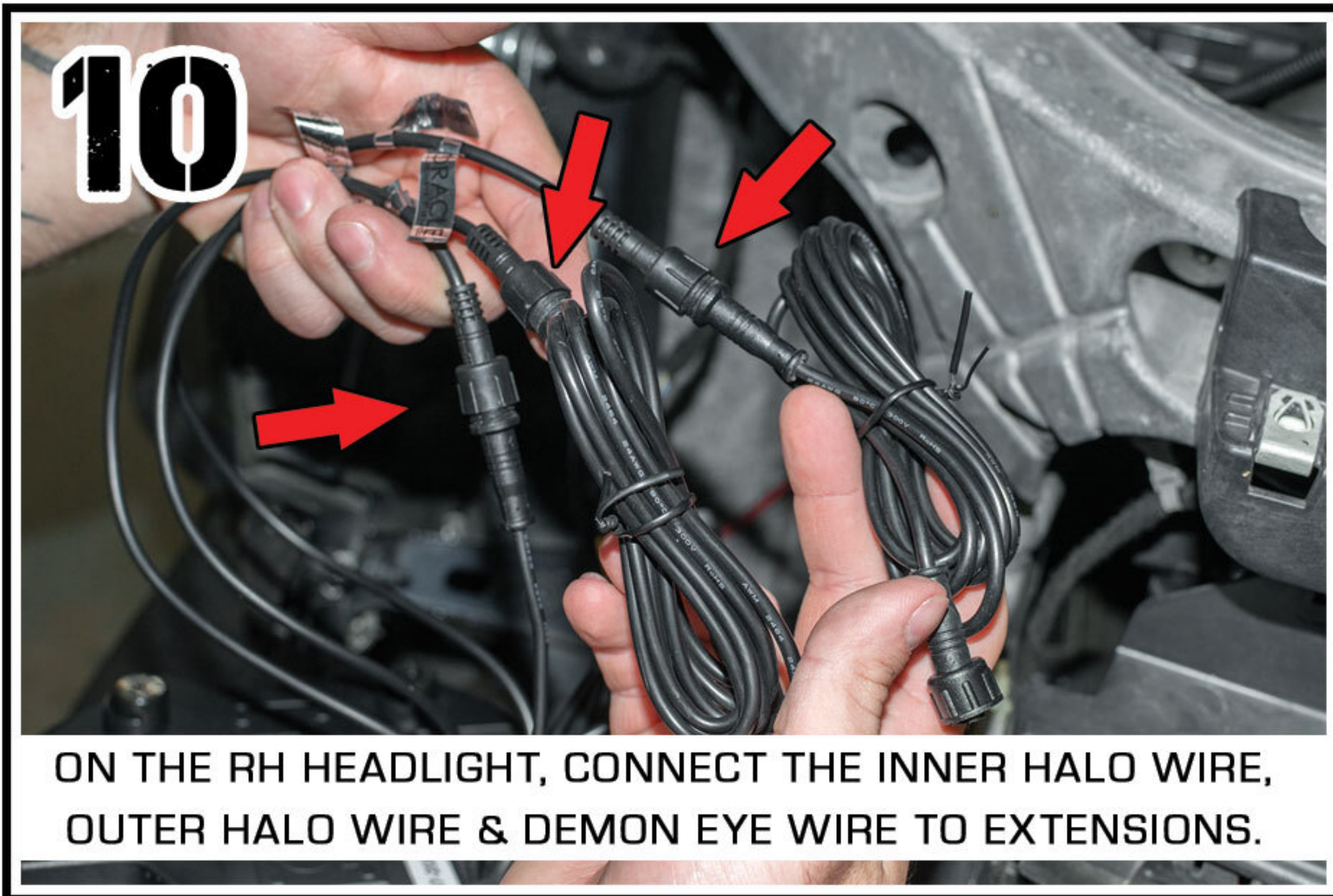




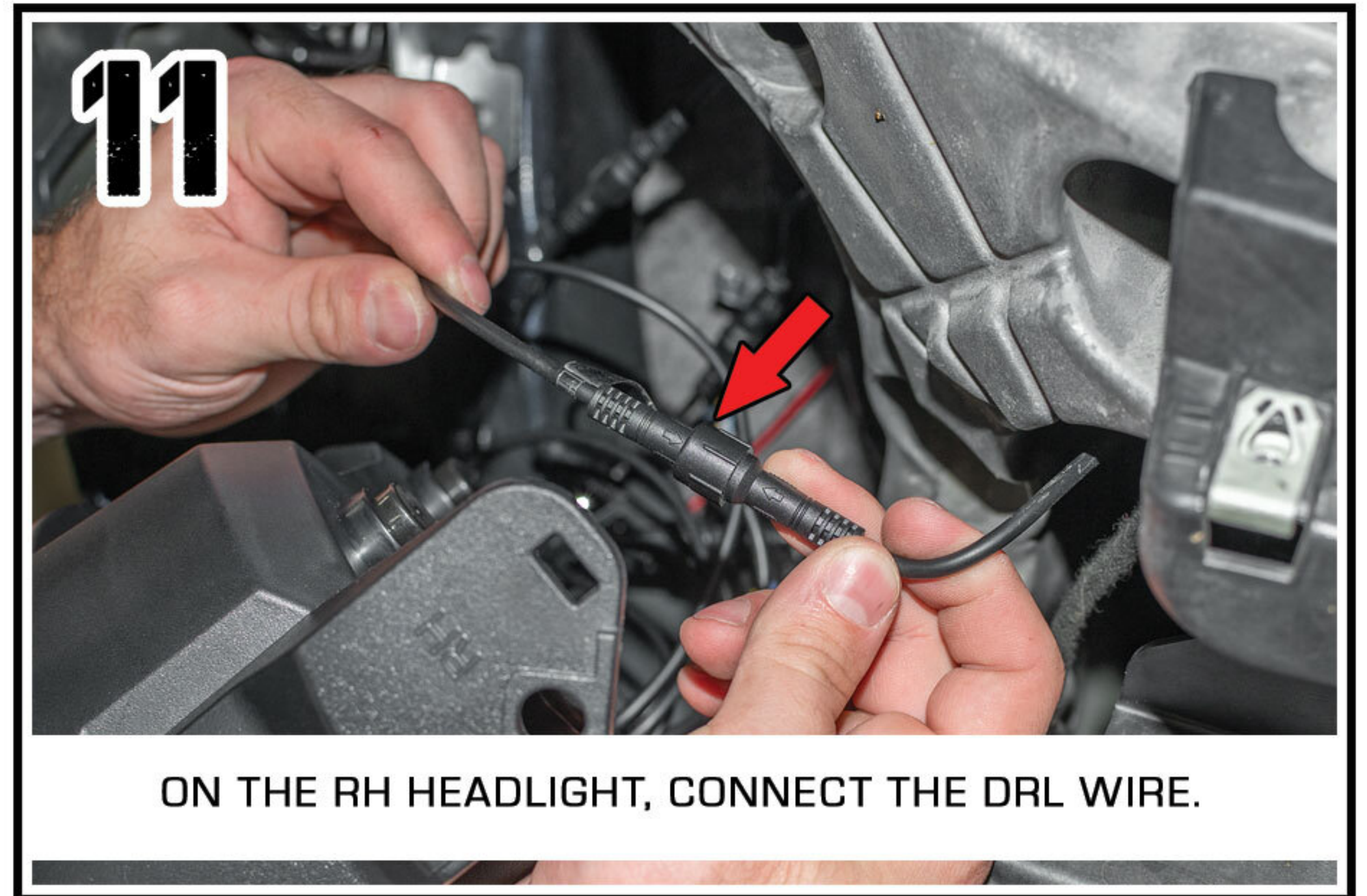
ON THE LH HEADLIGHT, CONNECT THE INNER HALO WIRE, OUTER HALO WIRE & DEMON EYE WIRE TO CONTROLLER.



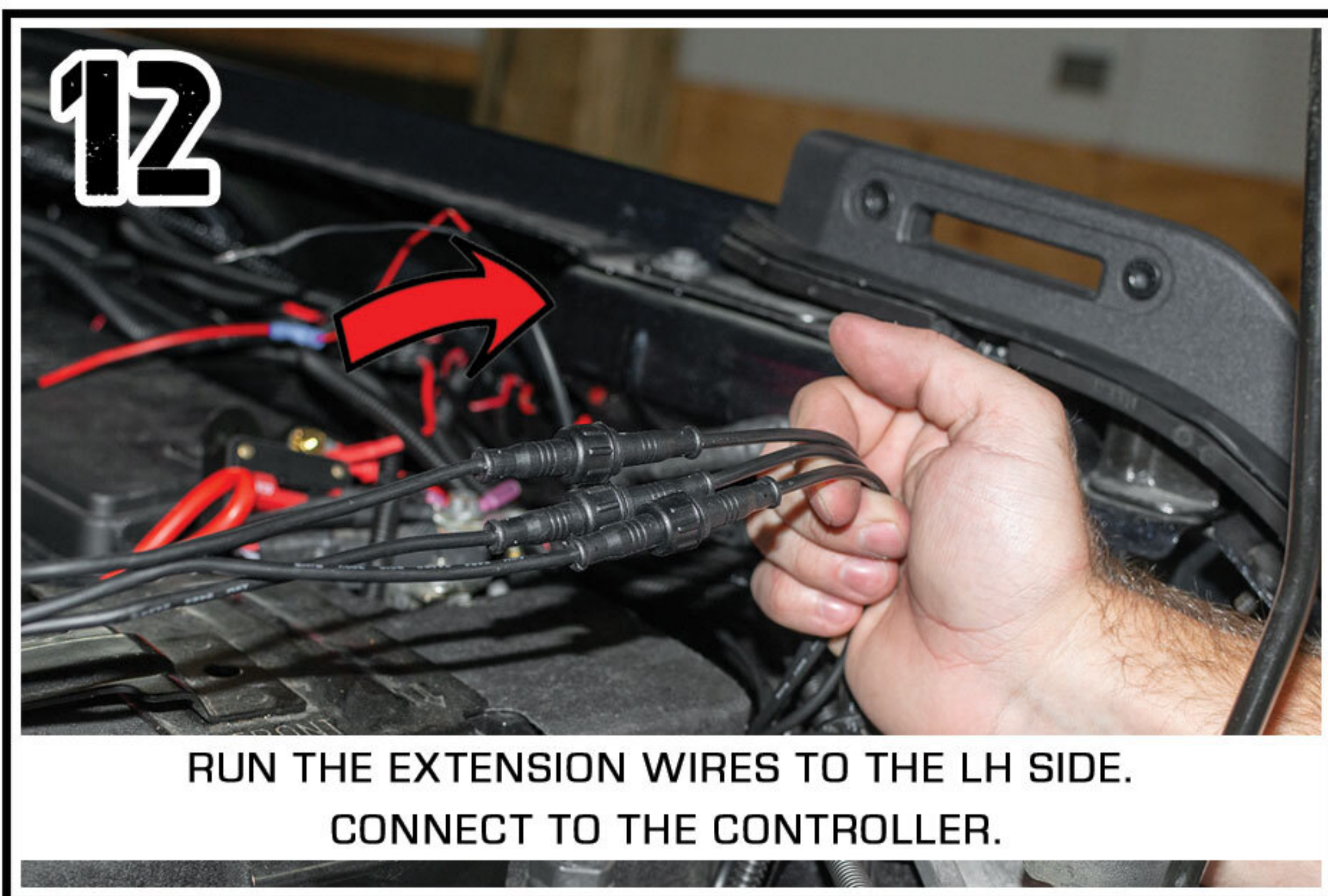
ON THE LH HEADLIGHT, CONNECT THE DRL WIRE.



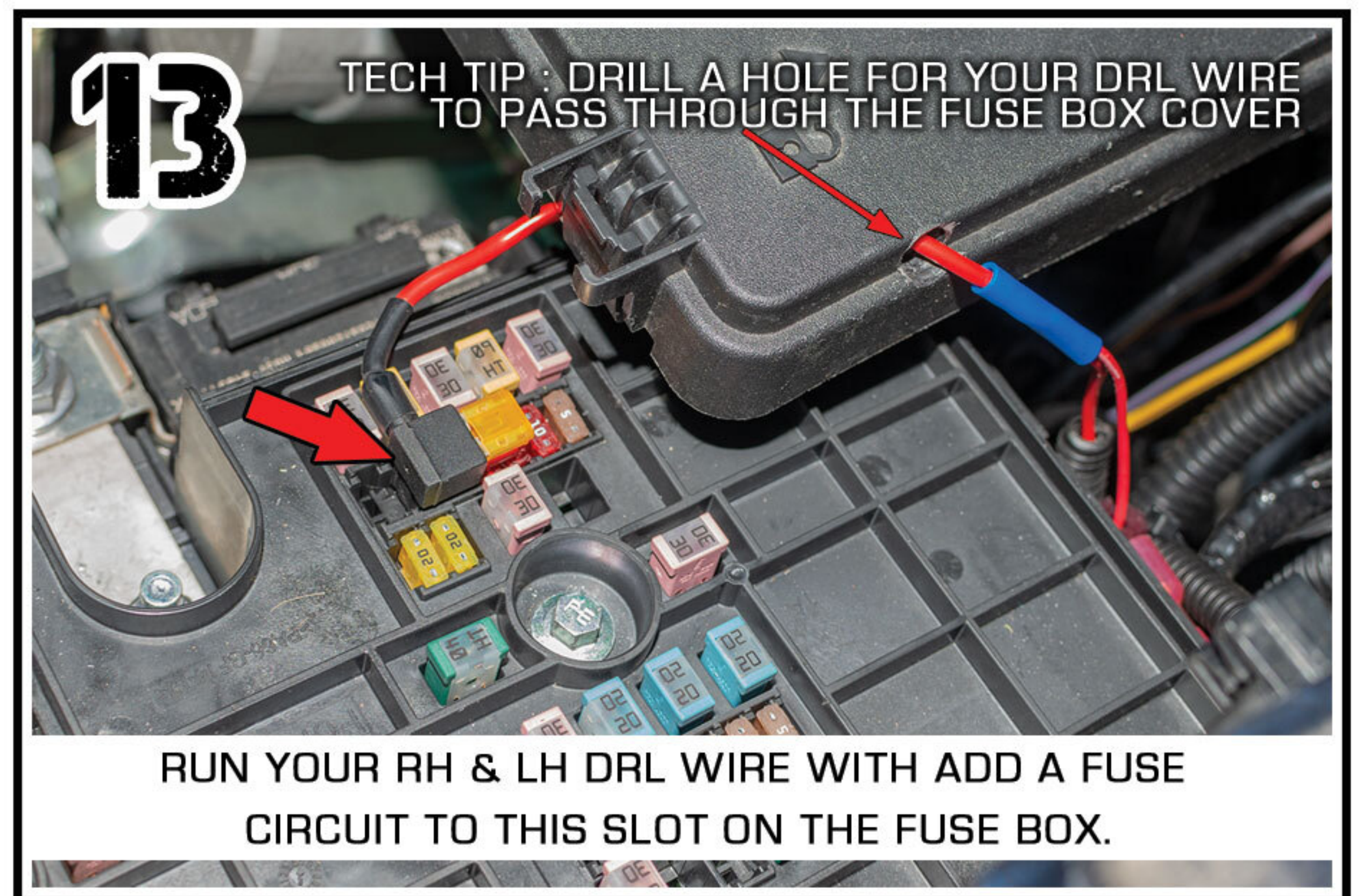
ON THE RH HEADLIGHT, CONNECT THE INNER HALO WIRE, OUTER HALO WIRE & DEMON EYE WIRE TO EXTENSIONS.



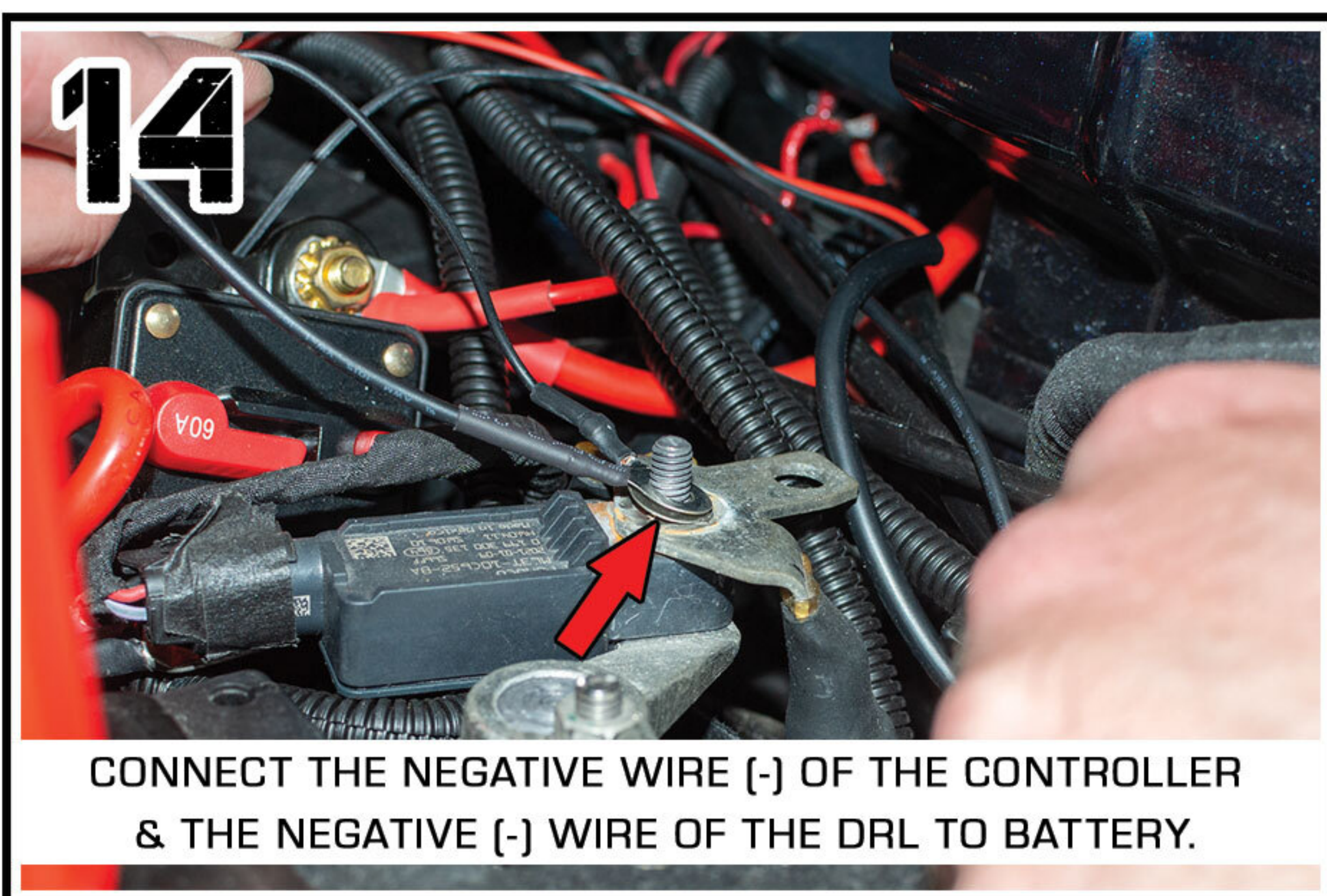
ON THE RH HEADLIGHT, CONNECT THE DRL WIRE.



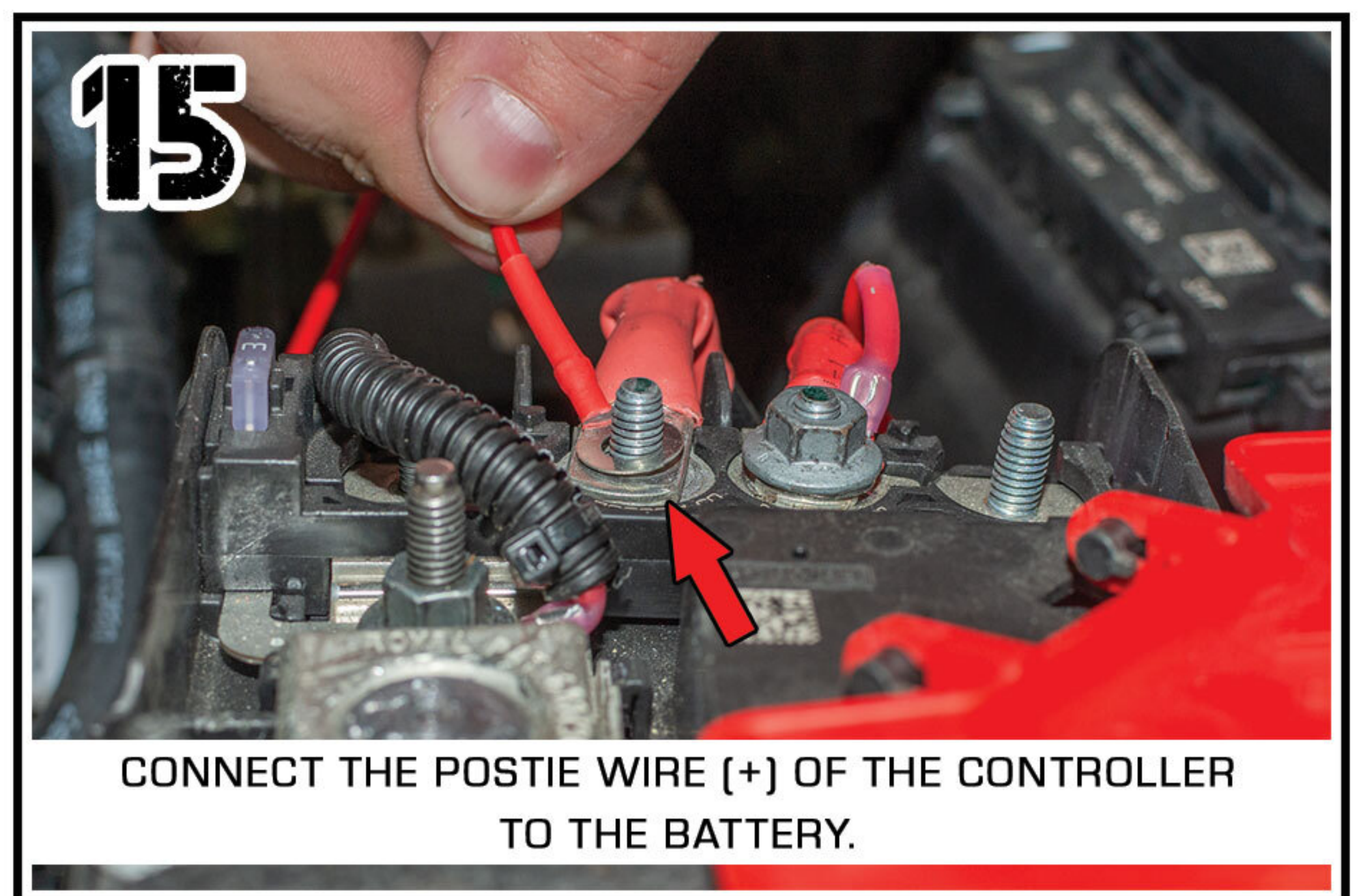
RUN THE EXTENSION WIRES TO THE LH SIDE. CONNECT TO THE CONTROLLER.



RUN YOUR RH & LH DRL WIRE WITH ADD A FUSE CIRCUIT TO THIS SLOT ON THE FUSE BOX.



CONNECT THE NEGATIVE WIRE (-) OF THE CONTROLLER & THE NEGATIVE (-) WIRE OF THE DRL TO BATTERY.



CONNECT THE POSTIE WIRE (+) OF THE CONTROLLER TO THE BATTERY.

DOWNLOAD COLORSHIFT® PRO APP FROM YOUR APP STORE

CONNECT TO THE APP TO CONTROL YOUR ORACLE LIGHTS



ORACLE LIGHTING

BC2 BLUETOOTH COLORSHIFT® CONTROLLER WIRING GUIDE



GET IT ON
Google Play



Download on the
App Store

DOWNLOAD "COLORSHIFT PRO" APP

