



Scan QR Code to Watch Installation Video

Thank you for purchasing a National Cycle product. Read these instructions carefully and thoroughly before beginning work. Dealers, if installing this product for a customer, please give them this manual upon completion. It contains information needed to properly maintain and use this product.

Description:	Adventure Luggage Rack	Model:	2019-Current Honda® CB500X
Part Number:	P9304	Installation Time:	20-30 min.

P9304 PARTS LIST

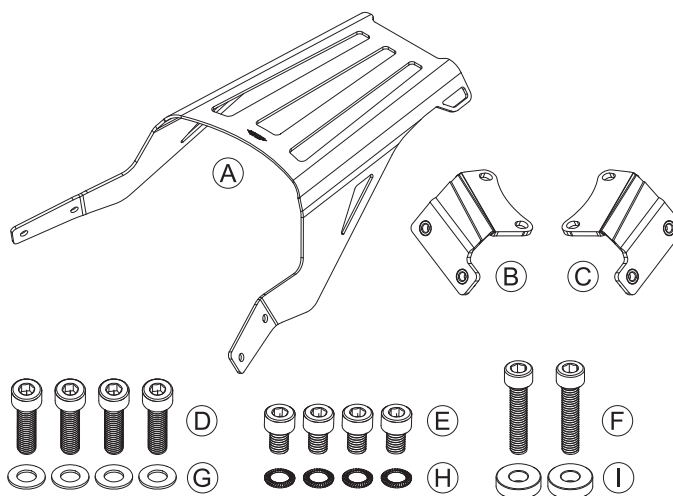
ITEM	PART NO.	DESCRIPTION	QUANTITY
A	37-374496-000	Luggage Rack, Black	1
B	37-374498-000	Mounting Bracket, Left, Black	1
C	37-374497-000	Mounting Bracket, Right, Black	1

BAG#1344

D	51-515734-000	Hex Screw, M8x30mm, Stainless	4
E	51-515712-000	Hex Screw, M8x1.25x12mm, Stainless	4
F	51-515331-000	Hex Screw, M6-1.0 x 30mm	2
G	49-490317-000	Washer, Flat, Stainless	4
H	49-492793-000	Spring Lock Washer, Serrated, Zinc Plated	4
I	49-495341-000	Spacer, Front, Aluminum	2

TOOLS REQUIRED FOR ASSEMBLY

5mm Allen Wrench	12mm Socket
6mm Allen Wrench	Ratchet Wrench with 6" Extension
	Small Phillips Screwdriver



ATTENTION: Special notes and cautionary measures which can prevent damage to the accessory or vehicle.



NOTE: Tips for facilitation of operation, control and adjustment, as well as maintenance work.

PREPARATION

Carefully unpack your new accessory, sort the parts, and make sure you have everything required to complete the assembly.



Figure 1

STEP 1: PREPARATION

Figure 1

Park your bike on its sidestand with plenty of room to work around the rear end.

Unlock and remove the motorcycle's seat, and set it aside.

Once the seat is removed, you will have access to the fasteners that secure the motorcycle's left and right grab rails.

STEP 1: PREPARATION; CONT'D

Figure 2

Beginning on the left side of the bike, loosen the plastic Body Screw with a small Phillips Screwdriver and push it out from underneath. Set it aside, as this part will be reinstalled later.


 **NOTE:** Be careful removing this Body Screw so that it does not fall inside the bike's side panel.

Figure 3

Using a 12mm Socket, remove the two bolts securing the rear part of the Grab Rail. These bolts will NOT be reinstalled.

Figure 4

Using a 5mm Allen Key, remove the screw securing the front part of the Grab Rail. This bolt will NOT be reinstalled.

Figure 5

Remove the left side Grab Rail and set it aside.


 **Repeat the procedure outlined in Figures 2-5 on the right side of the motorcycle.**

Figure 6

Identify the Luggage Rack Mounting Brackets. The Left Mounting Bracket (B) and Right Mounting Bracket (C) are situated as shown.

The extended tabs for the Luggage Rack will point toward the rear of the bike.



Figure 2

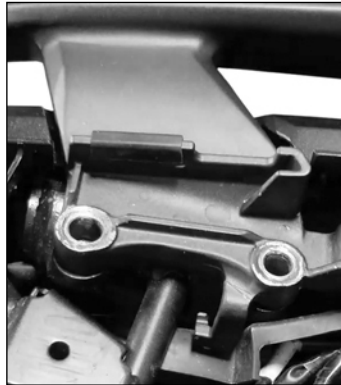


Figure 3



Figure 4



Figure 5

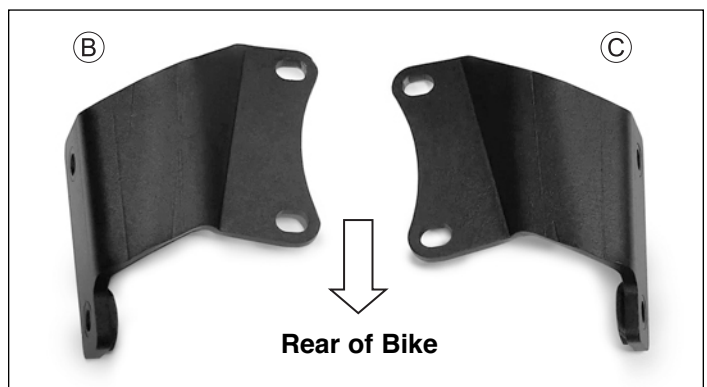


Figure 6

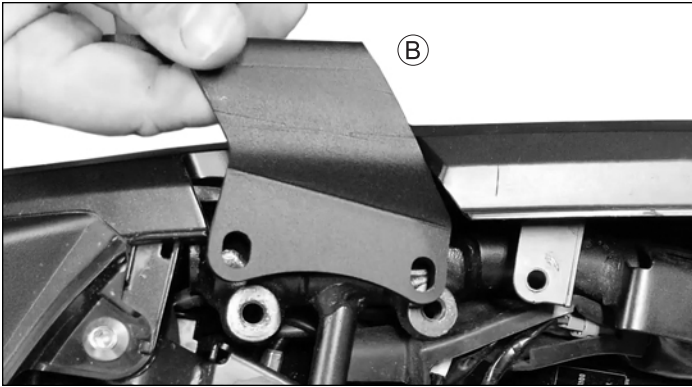


Figure 7



Figure 8



Figure 9



Figure 11

STEP 2: INSTALLATION

Figures 7-8

Place the Left Mount Bracket (B) on top of the frame rail and over the mounting points for the left side Grab Rail.

Reposition the left side Grab Rail to its original position and place the rear mounting points on top of the Left Mount Bracket.

Figure 9

Insert two M8x30 Hex Screws (D) and Flat Washers (G) into the left rear Grab Rail Mount points as shown, but just finger tight.

Figures 10-11

Replace the plastic Body Screw removed in *Step1: Figure 2*. Simply push it in until it bottoms out.

Figure 12

Lift the front mount point of the left side Grab Rail and place the Front Spacer (I) beneath the mount point as shown.



Figure 10

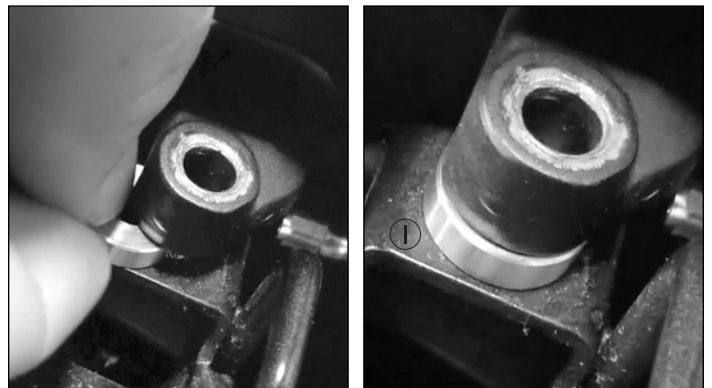


Figure 12



Figure 13



Figure 14



Figure 15



Figure 17

STEP 2: INSTALLATION; CONT'D

Figures 13-14


Insert one M6-1.0 x 30mm Hex Screw (F) into the front mount point of the Grab Rail and securely tighten with a 5mm Hex Key.

With a 6mm Hex Key, securely tighten the two M8x30 Hex Screws (D) securing the rear of the Grab Rail and the Left Mount Bracket (B).

Figures 15-16

Slide the front of the Luggage Rack over the bottom tabs of the Mounting Brackets (B/C) and under the tab extending down from the Grab Rail as shown.

Insert two M8x30mm Hex Screws (E) and Serrated Spring Lock Washers (H) through the Luggage Rack and into the Mounting Bracket and finger tighten.

 Repeat the procedure outlined in Figure 16 on the right side of the motorcycle.

Figures 17-18

With a 6mm Hex Key, securely tighten the M8x30mm Hex Screws (E) on both the left and right side of the motorcycle.



Figure 16



Figure 18



Figure 19



Figure 20

STEP 2: INSTALLATION; CONT'D

Figure 19

Double-check all underseat fasteners for tightness and then reinstall the motorcycle's seat and lock into place.

Figure 20

The installation is now complete.

Test ride for function and performance, and enjoy your new P9304 Extreme Adventure Gear Luggage Rack!

WARNING

Never operate your vehicle with loose accessory mounting hardware. Check the hardware for tightness regularly.

Motorcycles are built with enough frame rigidity to withstand the moderate loads imposed on them by the foreseeable addition of an accessory(ies). If an accessory(ies) adversely affects your vehicle's stability, immediately remove the accessory(ies). Do not operate a vehicle that exhibits unsafe handling traits.

Have experienced service personnel correct any problem before driving with the accessory(ies) installed. For further questions concerning handling problems associated with an accessory(ies), contact your dealer, motorcycle manufacturer, or accessory manufacturer.

Load capacity: 10 lbs. (4.5kg). Do not exceed limits.

Do not block taillight or brake light with your gear or luggage.

