

# INSTALLATION INSTRUCTIONS

2018+ BMW F850GS-GSA  
2020+ BMW F900XR-R

HeliBars Handlebar Relocation Adapters  
Part # HR05148

***IMPORTANT:  
PLEASE GIVE CUSTOMER ENCLOSED INFORMATION!***



Thank you for your purchase of our HeliBars®. They are designed to increase your long distance comfort and improve the handling of your sport motorcycle, and we feel confident you will enjoy them.

### **HeliBars INSTALLATION**

**IMPROPER INSTALLATION COULD RESULT IN SERIOUS INJURY OR DEATH.  
HAVE A QUALIFIED MECHANIC INSTALL YOUR HeliBars.**

**IF WE HAVE NOT INCLUDED SPECIFIC INSTRUCTIONS FOR YOUR  
MOTORCYCLE, THEN THE INSTALLATION IS SIMPLY A REVERSAL OF THE  
DISASSEMBLY PROCESS. \*\*NOTE THE LOCATION OF LINES AND CABLES. BE  
SURE TO CLEAN THE FORK TUBES BEFORE INSTALLATION!!**

**!! CAUTION !! MAKE SURE THE HeliBars ARE FULLY SEATED. TIGHTEN  
BAR END DAMPER WEIGHTS FIRMLY. AFTER INSTALLATION, MOVE BARS  
LOCK TO LOCK AND CHECK CLEARANCE OF: 1. CABLES 2. HYDRAULIC  
LINES 3. WIRES 4. FAIRING 5. FUEL TANK. TORQUE ALL HARDWARE TO  
MANUFACTURER'S SPECIFICATIONS.**

**IF YOU HAVE INSTALLATION QUESTIONS, PLEASE CALL 1-800-859-4642.**

**HELI MODIFIED, INC. ASSUMES NO LIABILITY FOR ANY INJURY OR LOSS OF  
PROPERTY WHICH MAY RESULT FROM IMPROPER INSTALLATION OR USE OF  
ANY HeliBars.**



# WARRANTY / RETURN POLICY

We make every effort to build a quality product so you can fully enjoy your riding experience. Thank you for your order.

HeliBars® may be returned for defects in materials and workmanship within one year from the date of shipment to the original purchaser, in which event the purchaser may receive a replacement set of HeliBars.

If within thirty (30) days of the shipping date you are not satisfied for any reason, you can return the HeliBars. Return policy is valid for original purchaser only. If HeliBars are purchased from a vendor other than Heli Modified, Inc., customer must contact vendor where purchased regarding returns. Refund will be extended to original purchaser only. There are no other warranties which extend beyond this.

Conditions of this 30 day return policy:

1. Bars must not be used as a tie down point. (See attached 'Trailer Instructions').
2. Bars cannot be damaged, dented, or altered in any way.
3. Bars cannot be overtorqued.
4. Refund will be for product purchase price only, and credited to original purchaser only.
5. Product must be returned with all original equipment, documents and in original packaging. There must be no physical damage caused by the customer or by carrier.
6. A Return Authorization Number must be obtained from us before you return the product.

We reserve the right to charge a re-stocking fee of up to 25% if the above criteria are not met.

**THERE ARE NO FURTHER EXPRESS OR IMPLIED WARRANTIES INCLUDING, BUT NOT LIMITED TO, IMPLIED WARRANTIES OF MERCHANTABILITY OR FITNESS FOR A PARTICULAR PURPOSE. By accepting this product, the consumer agrees to arbitrate and litigate any controversy in the State of Maine, and under the laws of the State of Maine.**

**HELI MODIFIED INC. ASSUMES NO LIABILITY FOR ANY INJURY OR LOSS OF PROPERTY WHICH RESULT FROM IMPROPER INSTALLATION OR USE OF ANY HELI BARS. ALL HELI MODIFIED, INC. PRODUCTS SHOULD BE INSTALLED BY A QUALIFIED MECHANIC. IMPROPER INSTALLATION MAY CAUSE DEATH OR INJURY.**

**Ride Safe and Enjoy!**





**2018+ BMW F850GS-GSA  
2020+ BMW F900XR-R**

**Installation Instructions – Part # HR05148**

**1 1/8” (28.6mm) Taller, 1 1/8” (28.6mm) Rearward**

---

**WARNING: IMPROPER INSTALLATION COULD RESULT IN SERIOUS INJURY OR DEATH.  
HAVE A QUALIFIED MECHANIC INSTALL YOUR HELIBARS®.**

**TOOLS REQUIRED:** Torx T20, T30, T40, 13mm open end box wrench, 13mm socket and torque wrench.

**COVER FUEL TANK AND SIDES OF FAIRING WITH PROTECTIVE MATERIAL.**

1. Cover tank and dash with protective shop rags. If equipped remove GPS or it's cover. Use a T25 Torx to remove the 4 Torx head screws as shown in **(Photo #1)**. Remove the screws and spacers. Cover the GPS mount with a rag and place it on the fairing in front of the throttle.
2. Loosen and remove top clamp and pinch bolts. **CAUTION** hold onto handlebar as you loosen bolts so it doesn't fall back onto fuel tank. **(Photo #2)** Place a thicker rag behind the top triple clamp as shown in **(Photo #3)** to protect handlebar and tank.
3. Place the Tour Performance Adapter where the stock bars mounted and install the 2 (two) 8mm x 25mm socket head cap screws into the forward two mounting holes. Use a 6mm Allen hex socket. (See **Photo #4 & 5**) Turn the screws in by hand until they bottom out. Then turn the screws back out 1/4 turn (counter clockwise).
4. Install the button head screws in the two rear holes until they bottom out. Then turn the screws back out 1/2 turn (counter clockwise). **(Photo #6)** Use a 5mm Allen hex socket.
5. Using your 6mm hex socket torque the two forward mounting screws to **16 ft. lbs.** **(Photo #7)**. Using a 5mm hex socket torque the two button head screws to **12 ft. lbs.** (See **Photo #8**)
6. Lift up handlebars and carefully place the tube into the adapter mounts **(Photo #9)**. Move it Left or Right to center the bars and install the top clamp with the two forward bolts. Turn the bolts in until they bottom and then back off 1/4 turn. (See **Photo #10**). Install and rotate the rear two bolts 2 or three turns in. They may feel a little snug. Rotate the bars to the relative position desired and torque the forward 2 bolts to **16 ft. lbs.** **(Photo #11)** Sit on the machine and make final adjustment. Try to avoid rolling bars back excessively from

the stock angle. This could cause the clutch cable to stretch on right turn to the steering stop. When an ideal position is found torque the rear two pinch bolts to **14 ft. lbs.** Re-install the GPS mount (if equipped). (See **Photo #12**)

**!! CAUTION!! HARDWARE MUST BE TORQUED TO  
SPECIFIED VALUES.  
THEY MUST NOT BE OVERTORQUED.  
OVERTIGHTENED HARDWARE CAN LOSE INTEGRITY.**

**For questions regarding installation please call 1-800-859-4642.**

**HELI MODIFIED, INC ASSUMES NO LIABILITY FOR ANY INJURY OR LOSS OF  
PROPERTY WHICH MAY RESULT FROM IMPROPER INSTALLATION OR USE OF  
ANY HELIBARS PRODUCT.**





Photo # 2



Photo # 4



Photo # 1



Photo # 3





Photo # 6



Photo # 8



Photo # 5



Photo # 7





Photo # 10



Photo # 12



Photo # 9

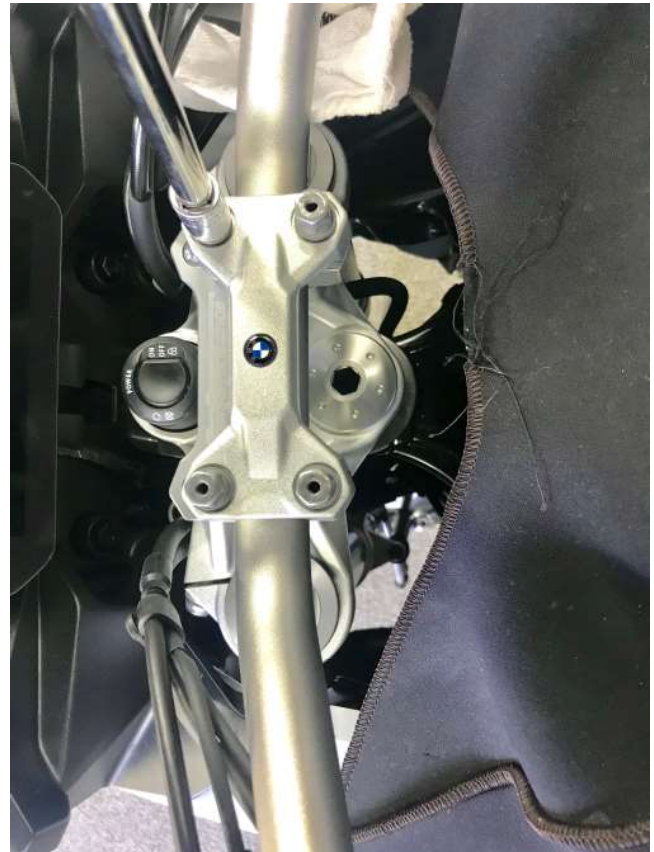


Photo # 11





## IMPORTANT INFORMATION ABOUT POWDER COATED HELIBARS

HeliBars® are finished with a polyester powder coating. The polyester is recommended for outdoor use because of its excellent UV resistant quality; if we were to use an epoxy it would tend to fade and chalk pretty quickly when exposed to sunlight and UV rays.

Care must be taken during installation because the finish can be scratched by the sharp surfaces of the controls and master cylinder clamps. When mounting the master cylinders to bars, do not let them move around the bars with the caps loose. Mount them in the proper position and hand tighten the screws until final adjustments are made; in this way you will lessen the possibility of scratching.

NOTE: Powder coat finish is not indestructible, there are chemicals which may react negatively when applied to finish. Brake fluid may cause deterioration of the finish. We do not recommend the use of acetone or similar chemicals for cleaning purposes. We would recommend the use of an over-the-counter adhesive remover (such as Goo Gone) for the removal of any extraneous material. Please read labels directions for any cleaning/polishing product before use. If you have any questions regarding the use of any over-counter-products with the HeliBars, please call us before applying them to the powder coated finish.

If care is taken during installation, your HeliBars will continue to look as good as when they were new. They will look great for years to come with a bit of wax and careful cleaning. Thank you for your purchase, ride safe and enjoy!

Sincerely,

Harry Eddy, President



# Trailing with HeliBars®

HeliBars clip ons and handlebars must not be used as the primary holding points for tie downs while trailering. *As with your stock bars* applying extreme force to the ends of the bars can bend the bars or rotate them on their mounts.

Use a wheel chock and pull the machine down and forward using soft ties or similar, attached to the lower triple clamp.

Bars should only be used as secondary attachment points to steady the motorcycle from lateral sway.

Failure to follow these guidelines can cause damage to the bars and the motorcycle, and may also void our warranty.

