



EVOTECH®
P E R F O R M A N C E

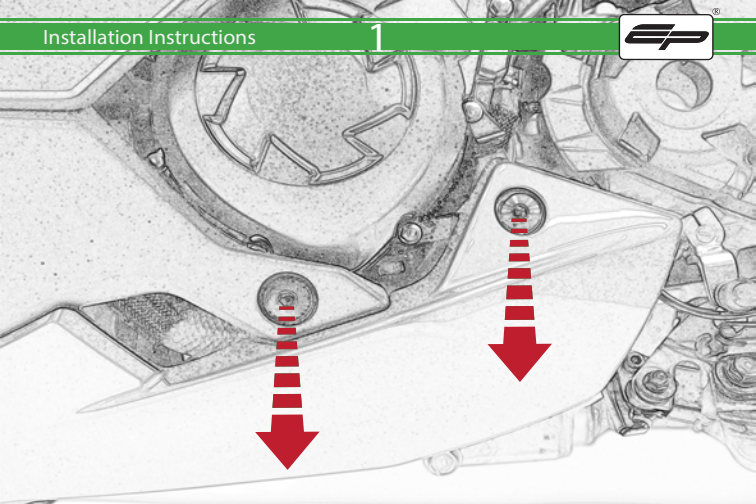
Kawasaki Ninja 1000 SX
Radiator Guard

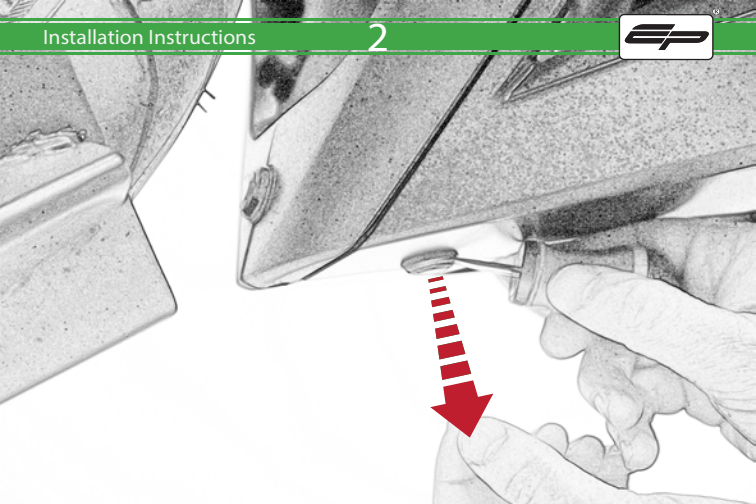
Installation Instructions

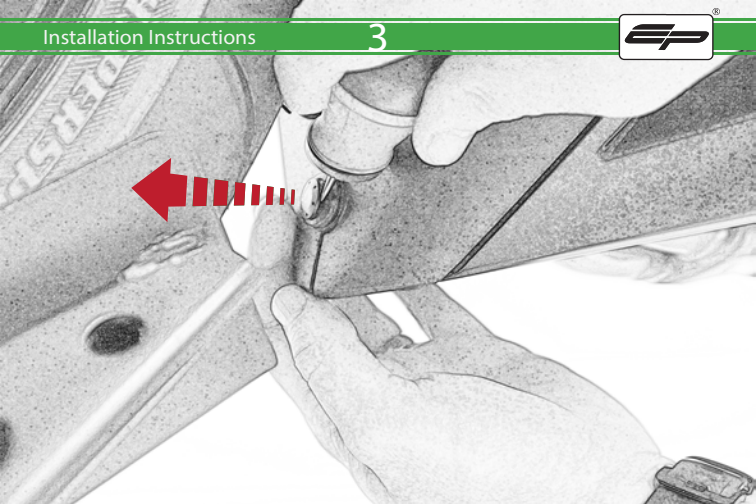


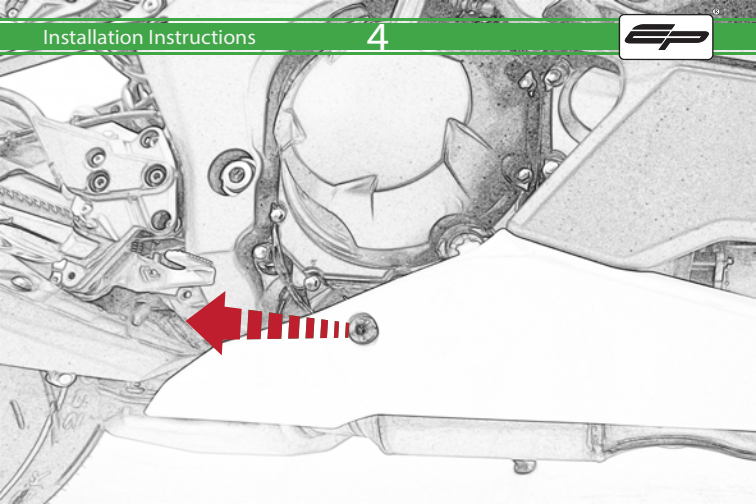
Kit Contents PRN015093

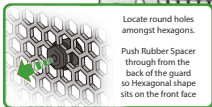
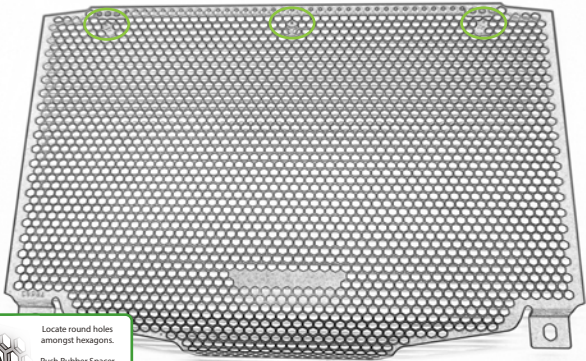
- (A) 2 x M6 x 10mm x 2
- (B) 2 x Lugnuts
- (C) 3 x Rubber Bungs





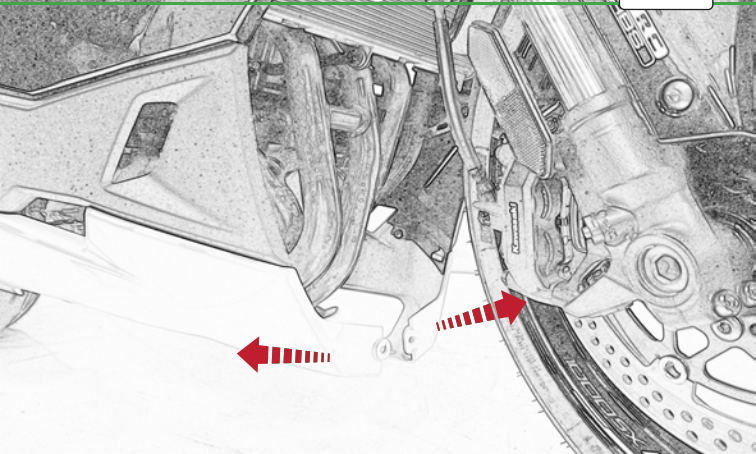


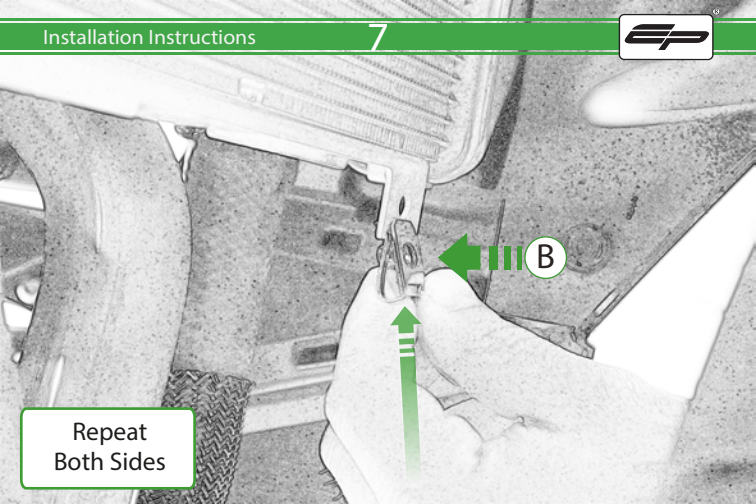




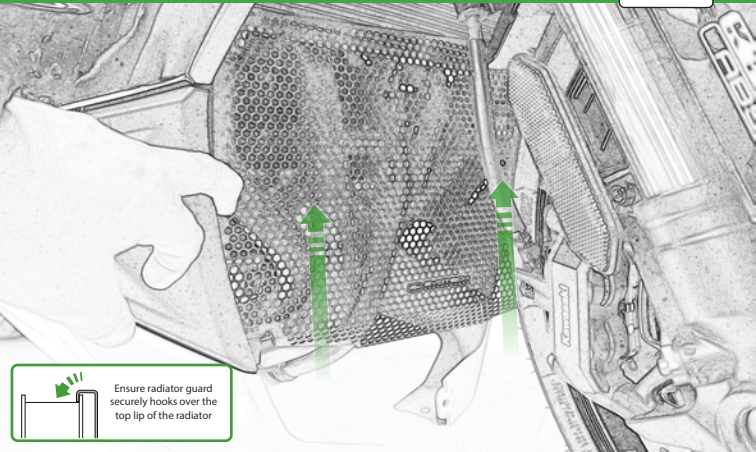
Locate round holes amongst hexagons.

Push Rubber Spacer through from the back of the guard so Hexagonal shape sits on the front face

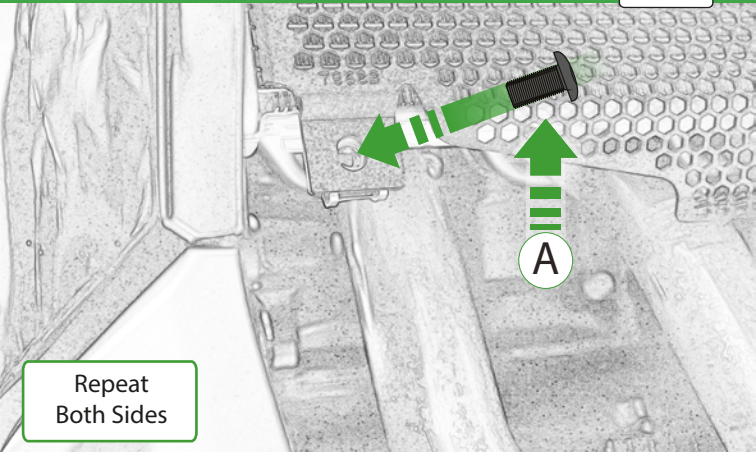




Repeat
Both Sides



Ensure radiator guard
securely hooks over the
top lip of the radiator



Repeat
Both Sides



Reverse Stages



5-1

EVOTECH[®]

P E R F O R M A N C E



ESSENTIAL CHECKS

It is recommended that periodic inspections are made to ensure that dirt and debris have not become trapped between the guard and the radiator/oil cooler. Such dirt and debris would reduce the cooling efficiency of the radiator/oil cooler. ®

It is recommended that periodic inspections are made to ensure that all fixings are fully tightend.



EVOTECH®
P E R F O R M A N C E

www.evotech-performance.com