



**EVOTECH**®  
P E R F O R M A N C E

[www.evotech-performance.com](http://www.evotech-performance.com)

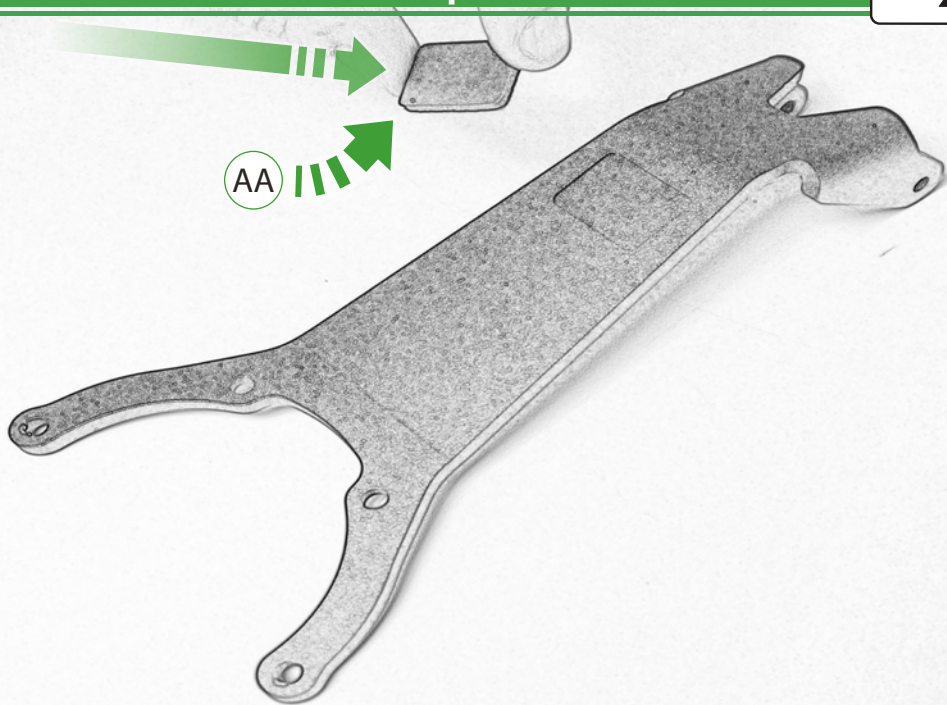
# MV Agusta Brutale 800 Quadlock Mount Installation Instruction

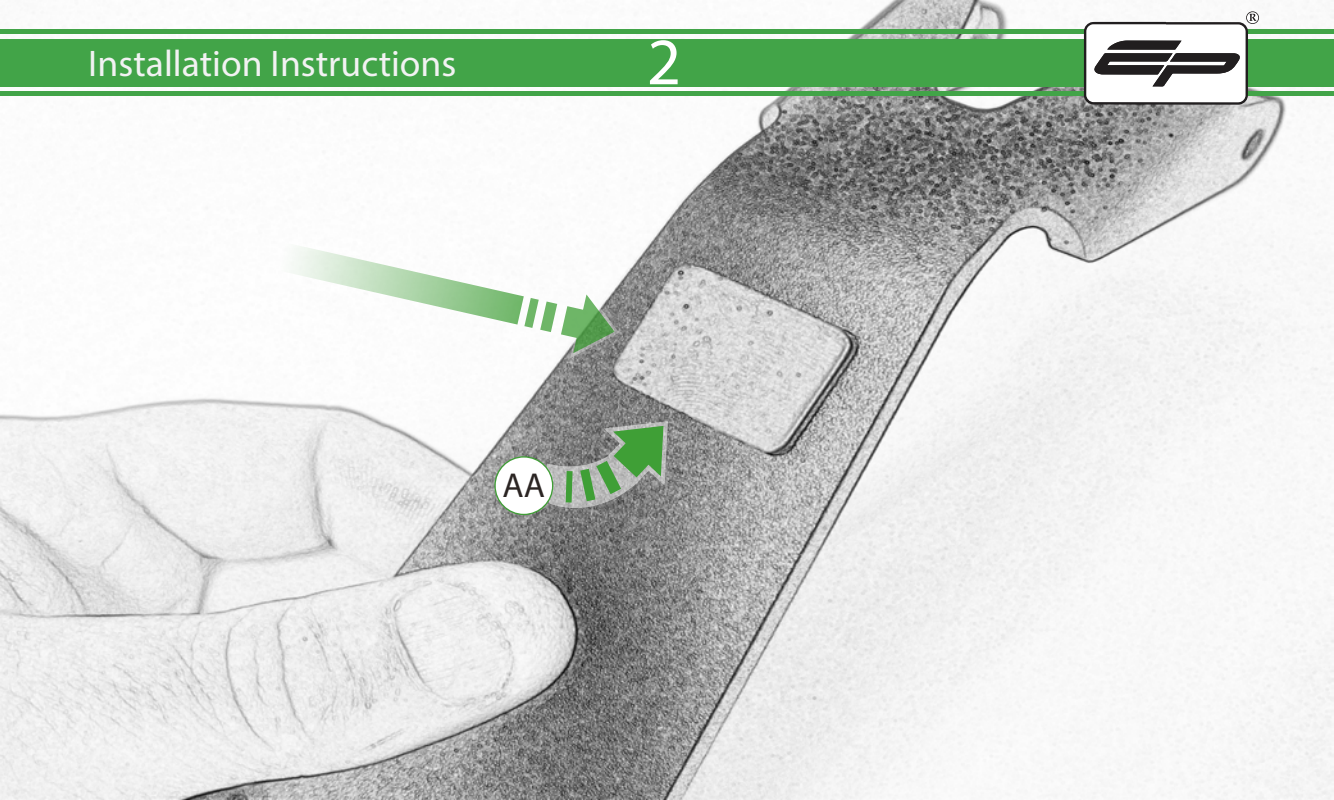


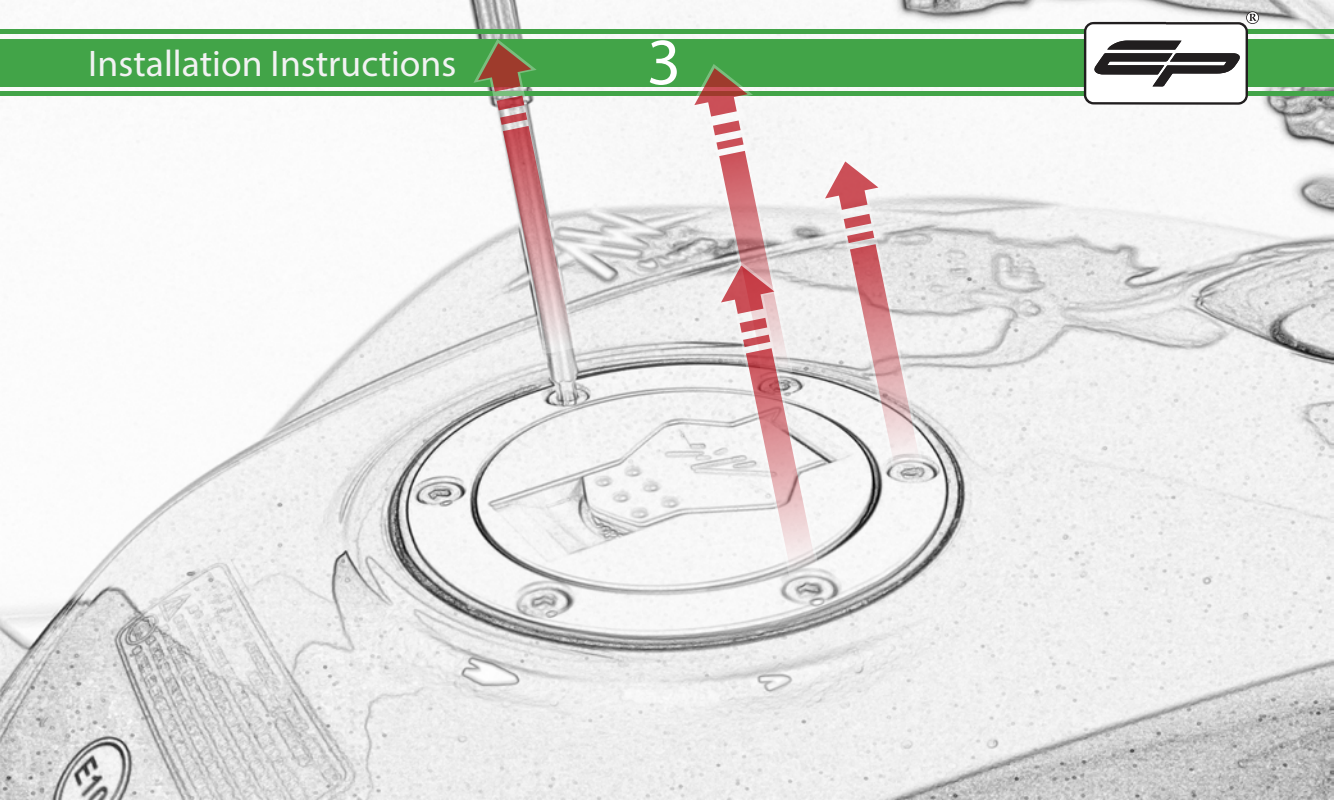
- Ⓐ 1 x Main Plate
- Ⓑ 1 x Pivot Plate
- Ⓒ 1 x Quad Lock Sub Bracket
- Ⓓ 1 x Quad Lock Mounting Bracket
- Ⓔ 2 x M5 x 8mm Black Button Head Bolts
- Ⓕ 2 x Locking Washer
- Ⓖ 2 x M5 Black Washer
- Ⓗ 2 x M5 X 12 Caphead
- ⒶⒶ 1 x Rubber Pad
- ⒷⒷ 2 x M5 x 45mm Black Button Head Bolts
- ⒸⒸ 2 x M5 x 25mm Black Button Head Bolts
- ⒹⒹ 4 x Spacers

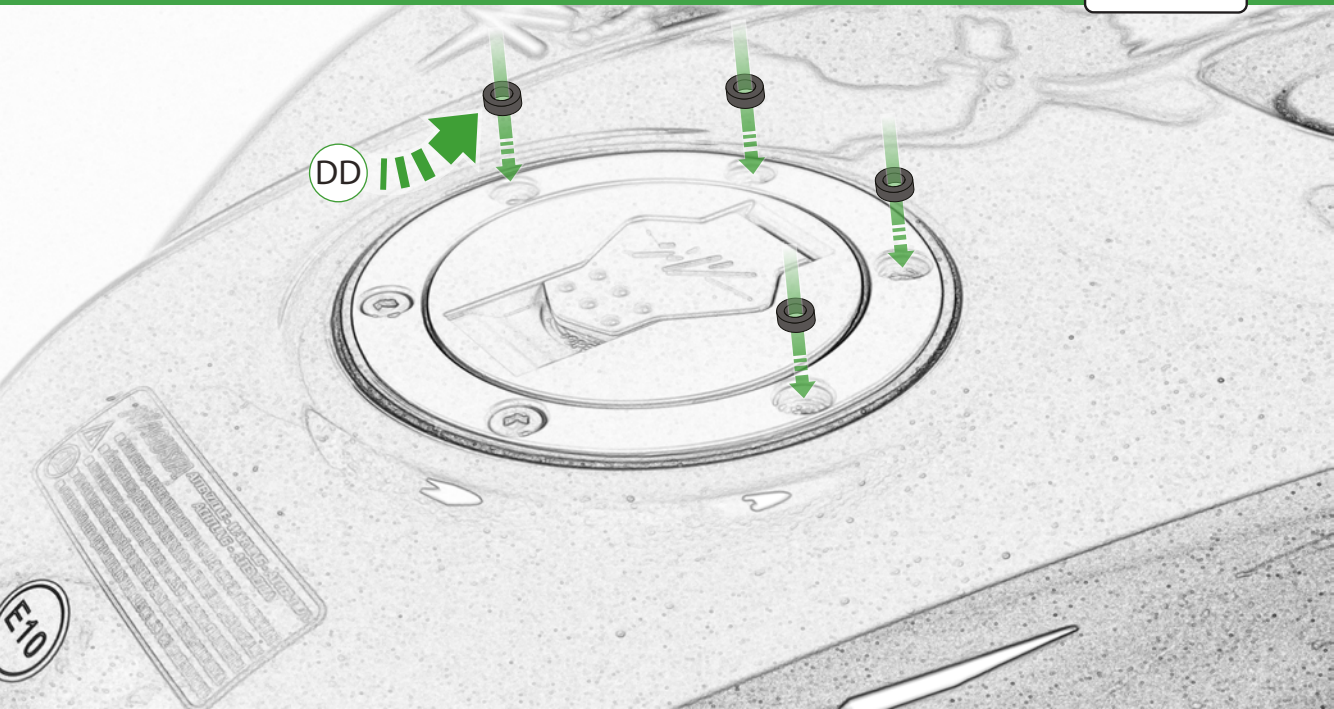
**EPTeCH**®

P E R F O R M A N C E

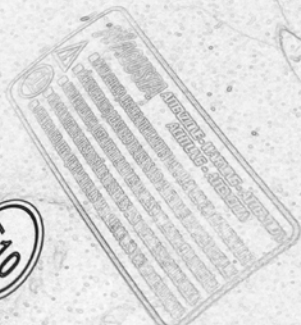






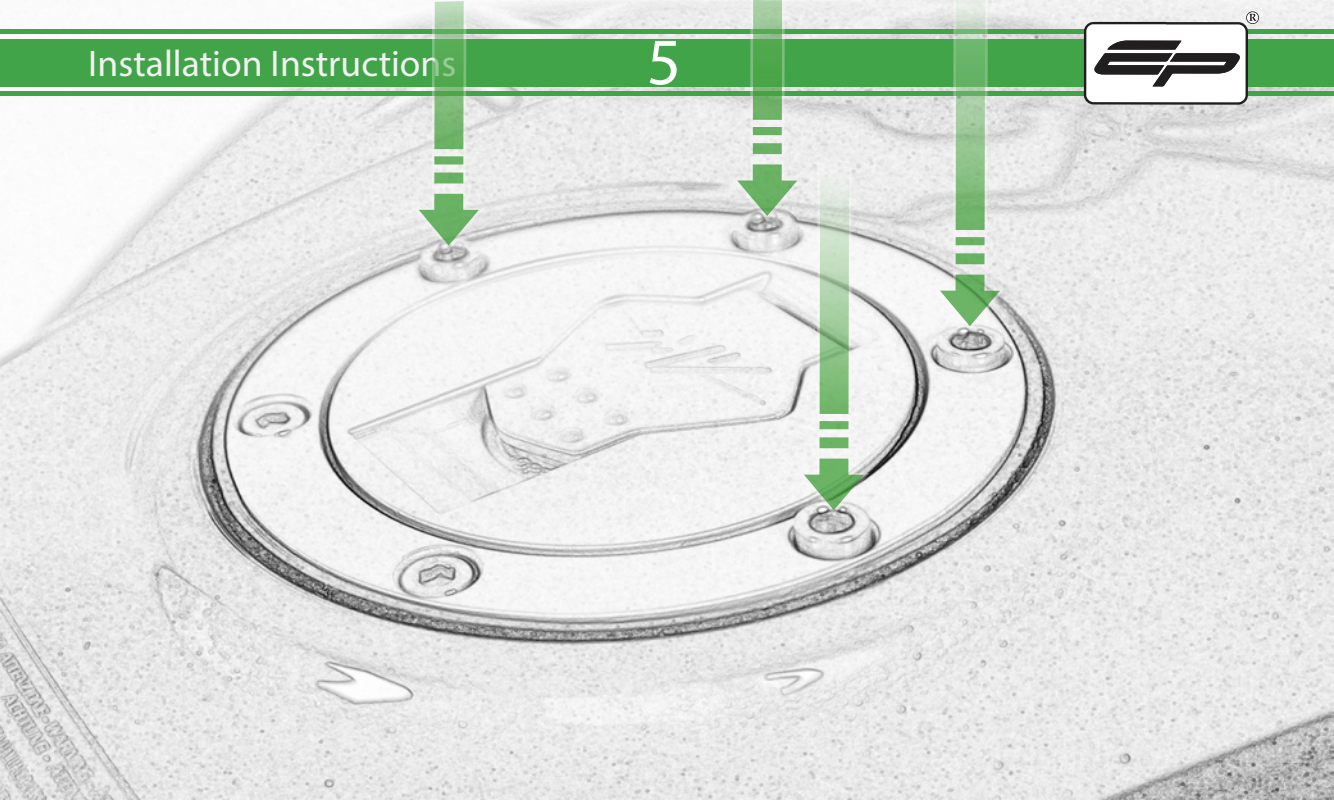


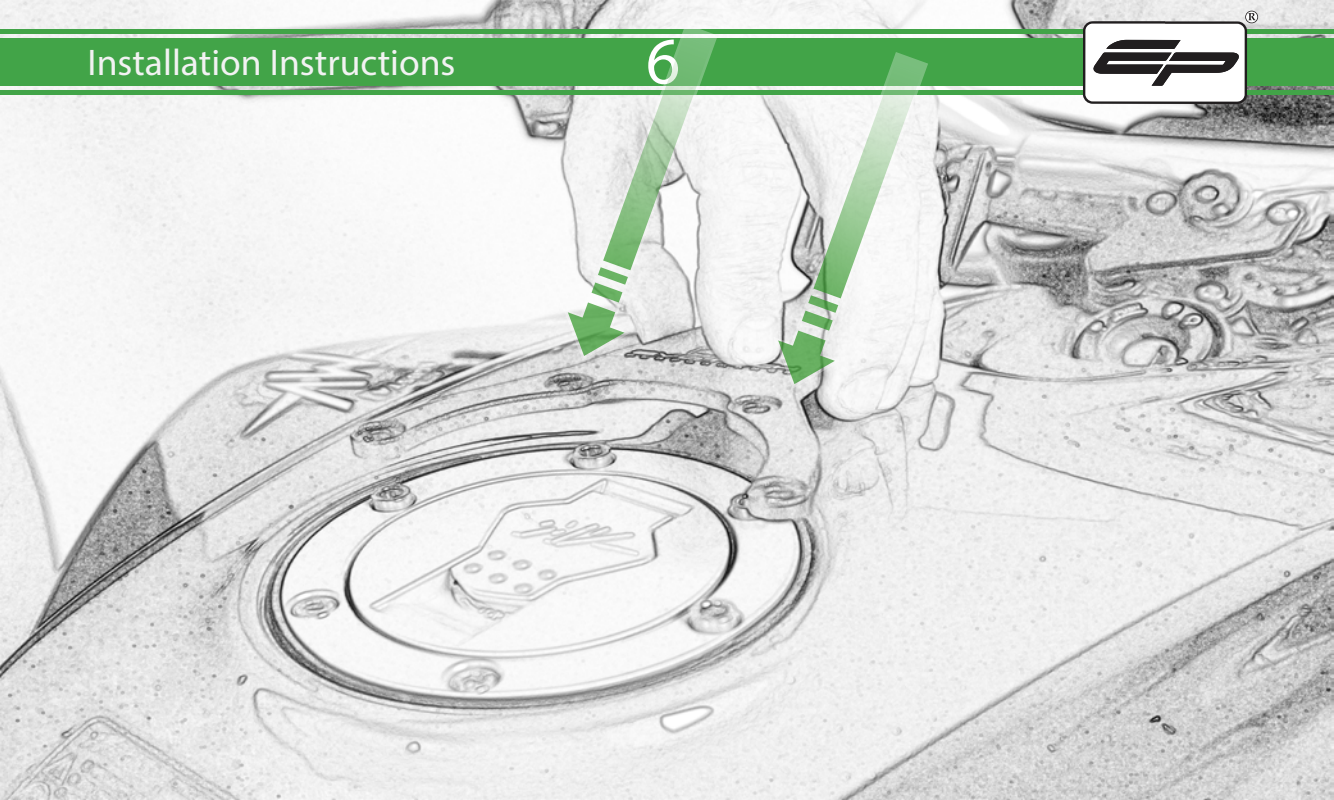
DD



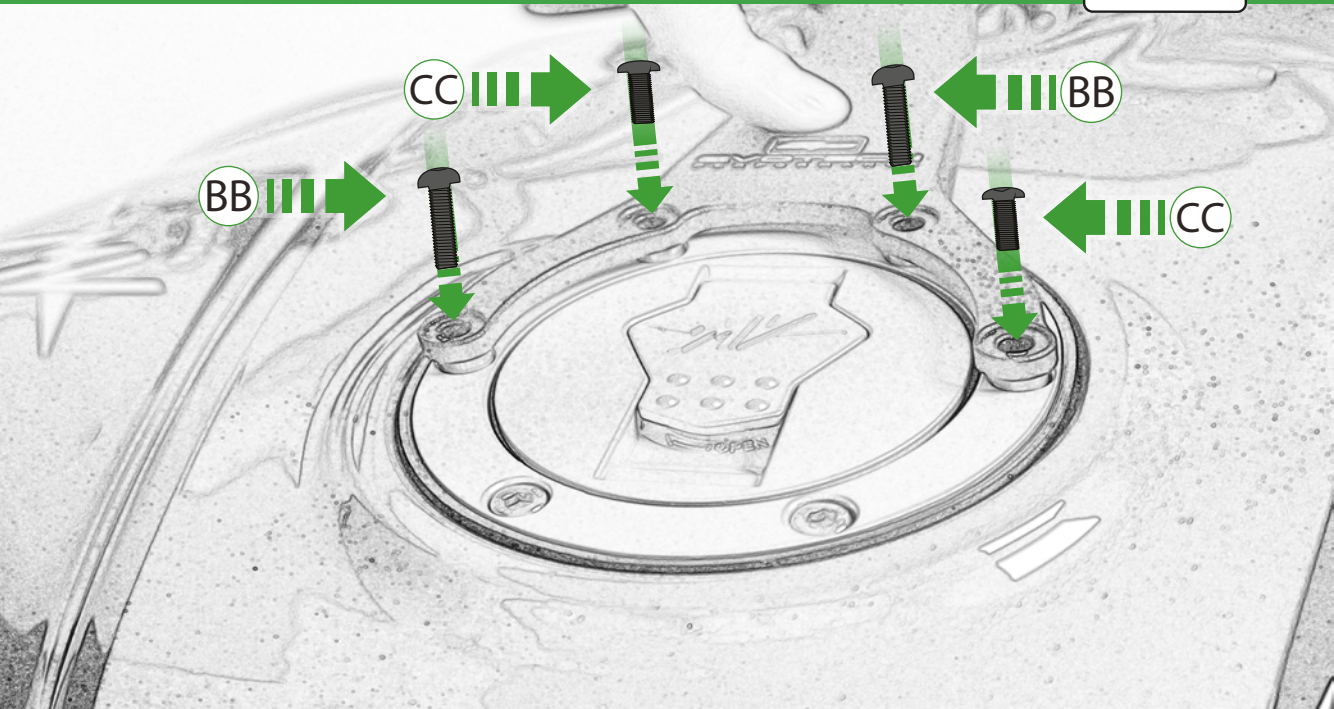
E10

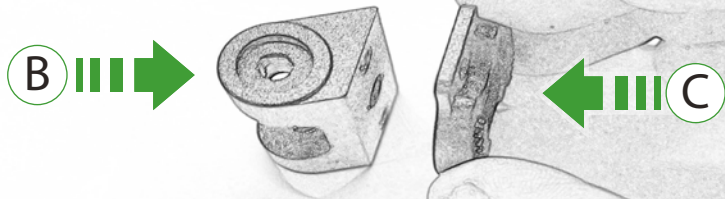


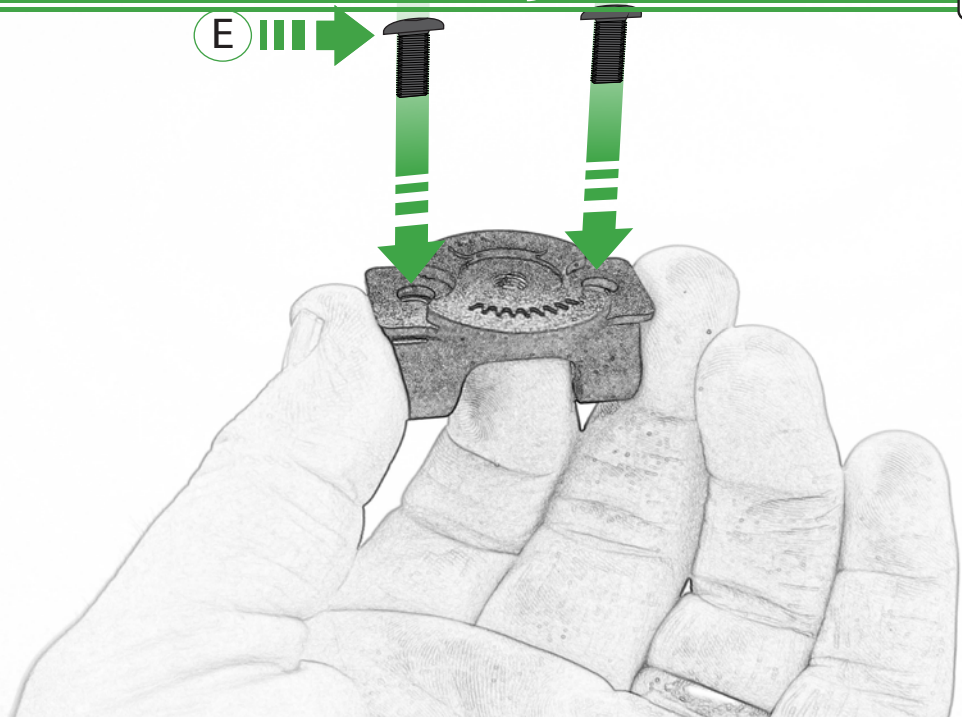


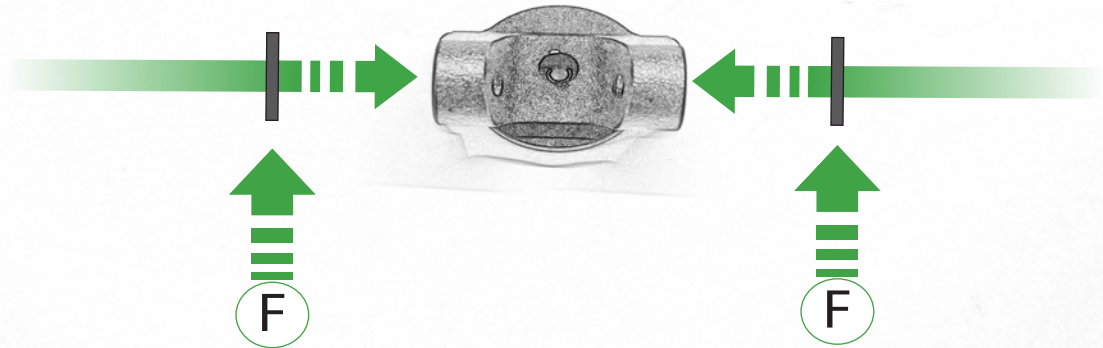


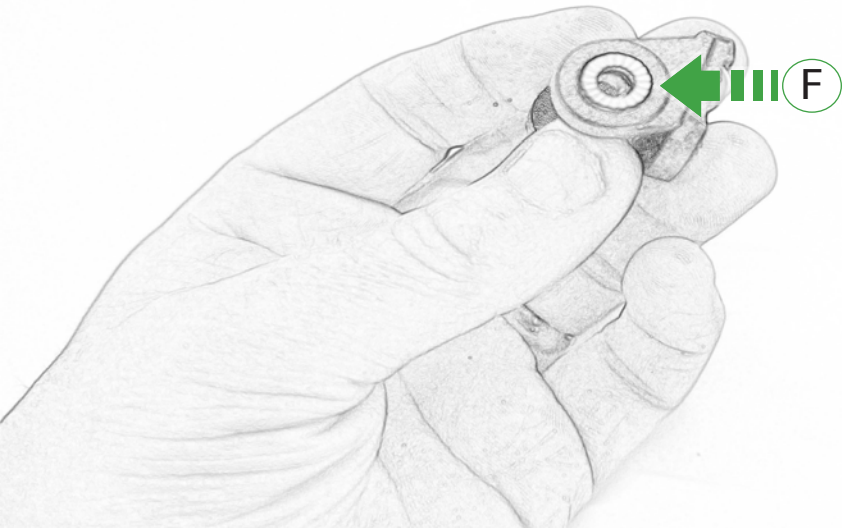


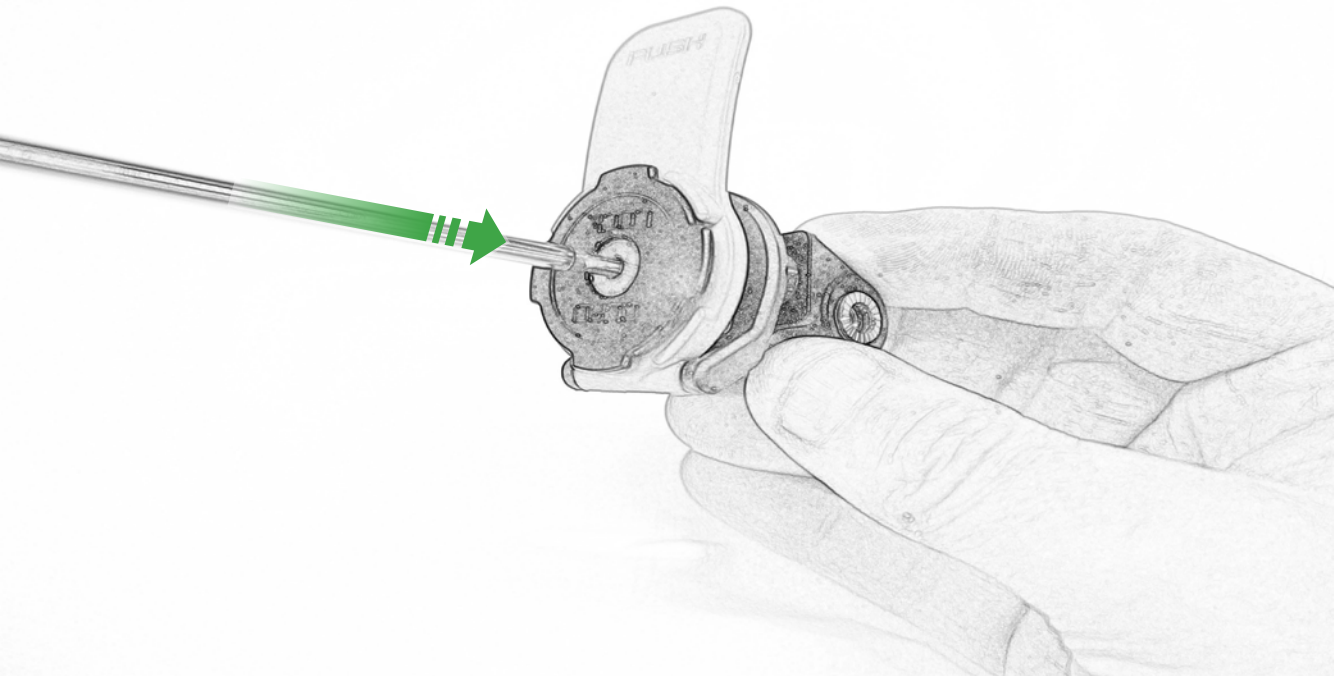




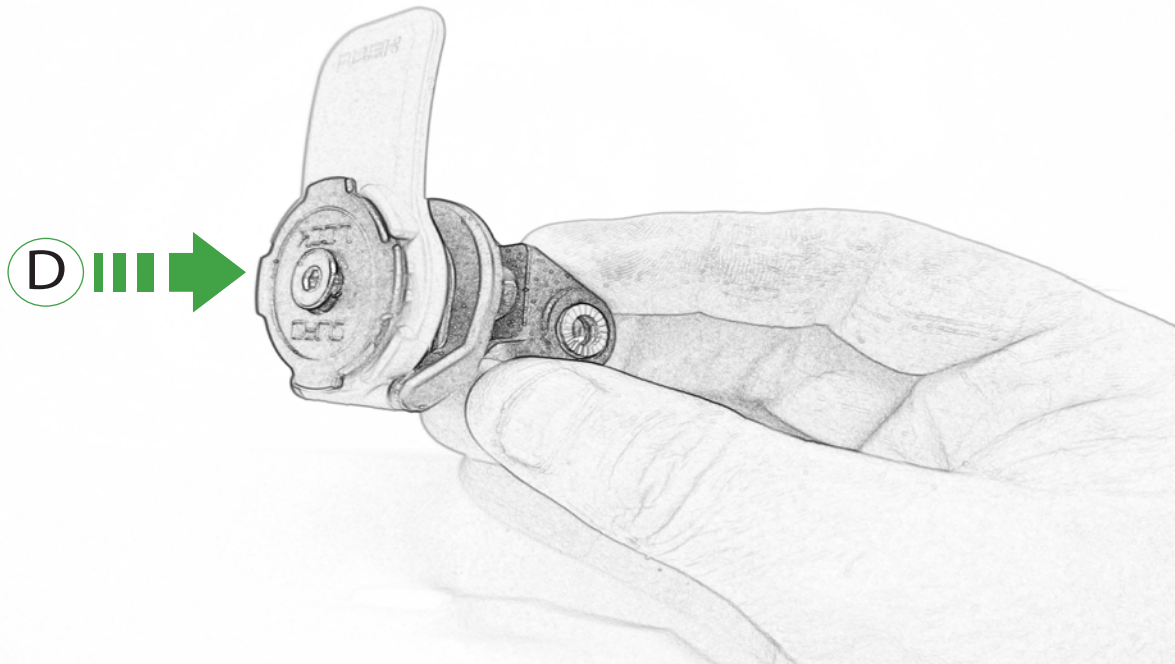


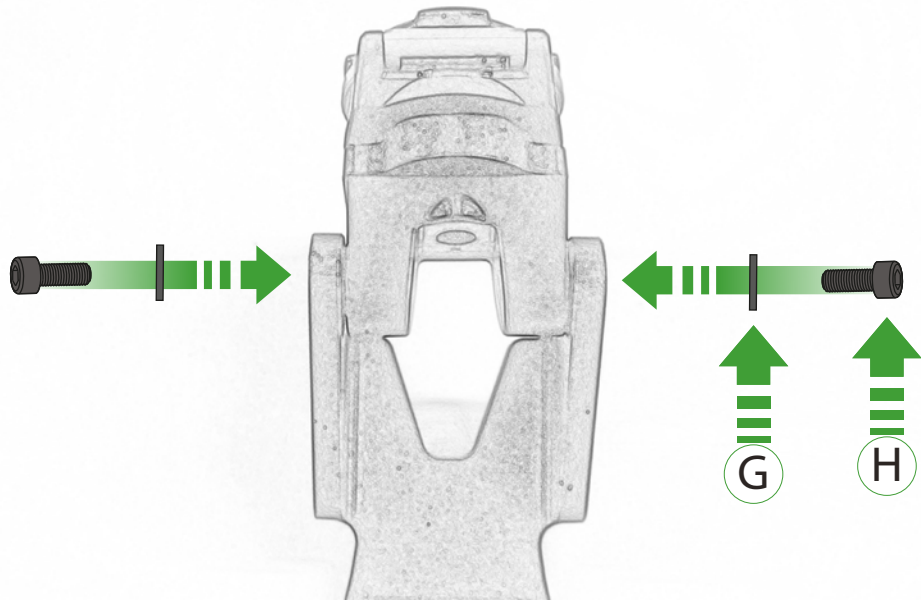














 **ESSENTIAL CHECKS**  <sup>®</sup>

It is recommended that periodic inspections are made to ensure that all bolts are tightened to the specified torque settings.

Should the bike be involved in an accident a thorough inspection should be made and any components that have taken an impact, no matter how small, be replaced

P E R F O R M A N C E <sup>®</sup>



**EVOTECH**®  
P E R F O R M A N C E

[www.evotech-performance.com](http://www.evotech-performance.com)