



**EVOTECH**®  
P E R F O R M A N C E

**Installation Instructions**

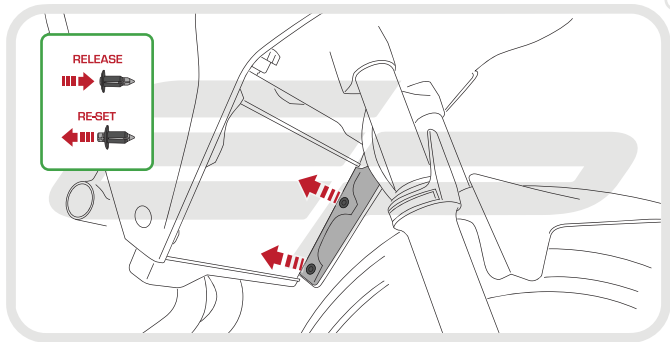


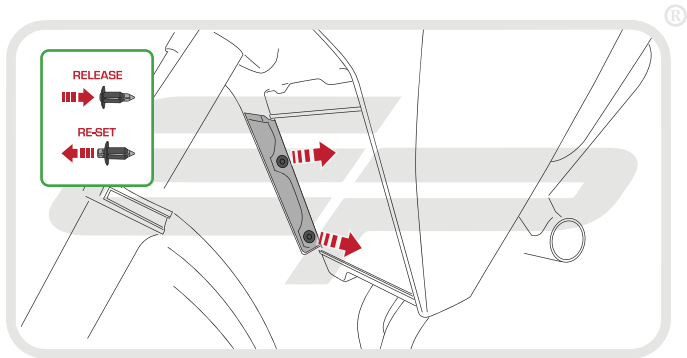
## YAMAHA TRACER 700 RADIATOR GUARD

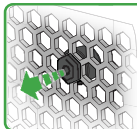
Product Reference - 13368

### Kit Contents

- Ⓐ 1 x Raditor Guard
- Ⓑ 6 x Rubber Spacers

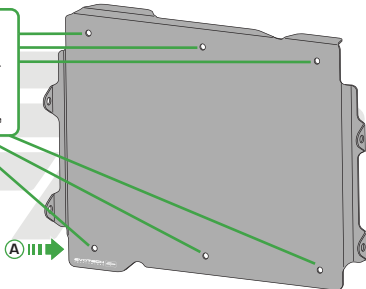


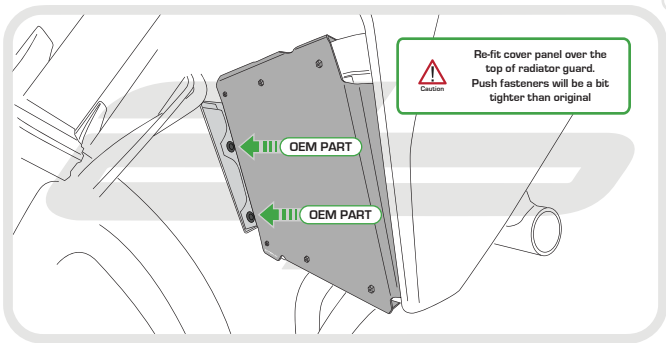


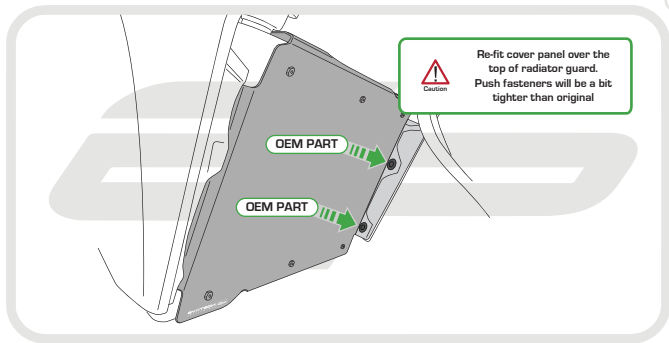


Locate round holes amongst hexagons.

Push Rubber Spacer through from the back of the guard so Hexagonal shape sits on the front face









### ESSENTIAL CHECKS

It is recommended that periodic inspections are made to ensure that dirt and debris have not become trapped between the guard and the radiator/oil cooler. Such dirt and debris would reduce the cooling efficiency of the radiator/oil cooler.

It is recommended that periodic inspections are made to ensure that all fixings are fully tightened.





**EVOTECH**®  
P E R F O R M A N C E

[www.evotech-performance.com](http://www.evotech-performance.com)