



EVOTECH®
P E R F O R M A N C E

Installation Instructions

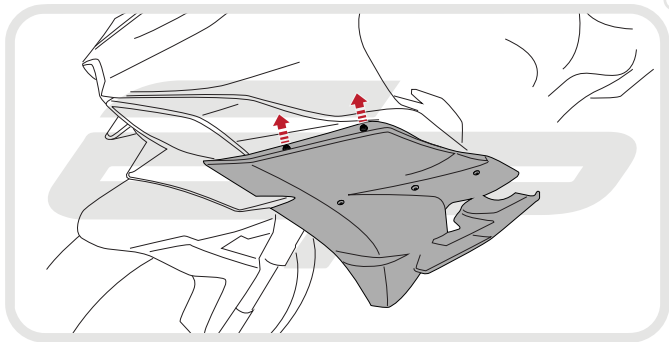


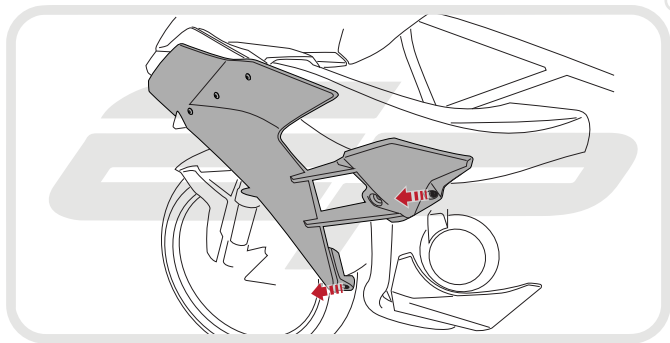
KAWASAKI H2 2015 RADIATOR GUARD

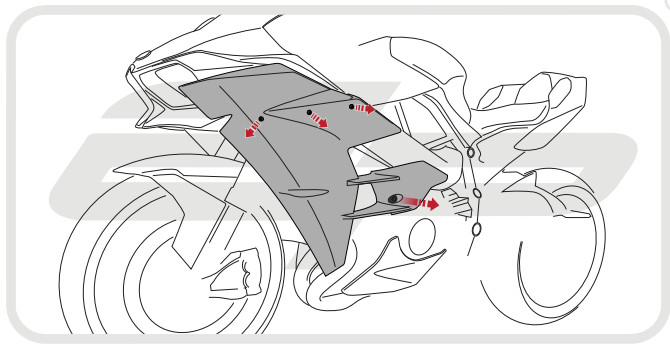
Product Reference - 12366

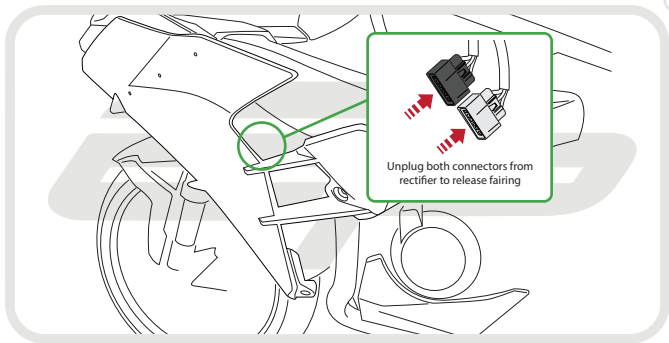
Kit Contents

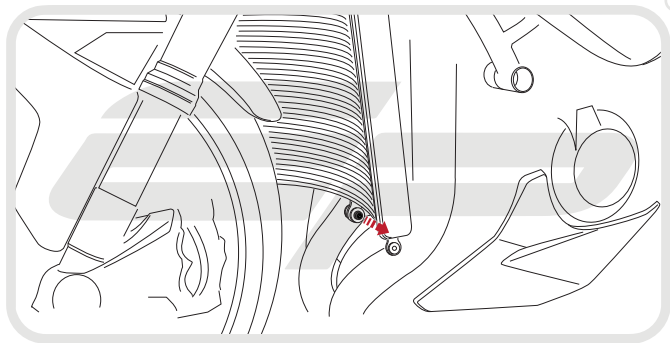
- Ⓐ 1 x Radiator Guard
- Ⓑ 8 x Neoprene Foam











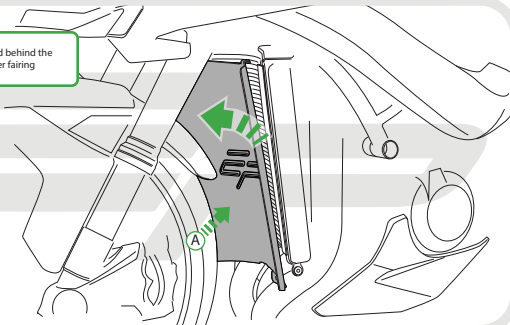


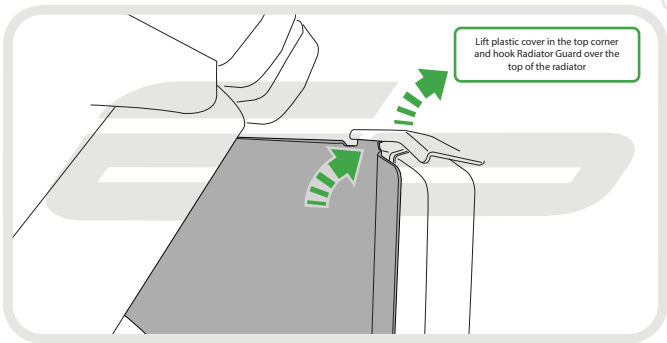
Cut Neoprene in half and
apply to both side of the header tanks



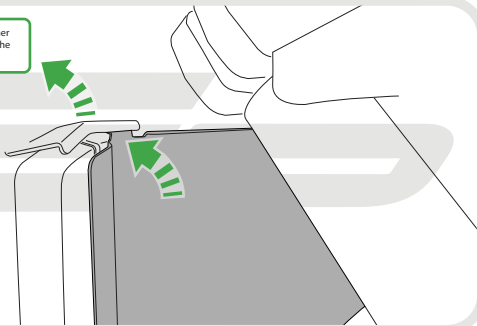
Repeat
Both Sides

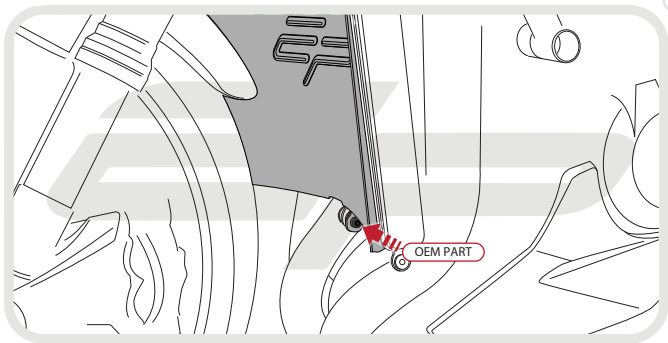
Tuck Radiator Guard behind the
right hand inner fairing





Lift plastic cover in the top corner
and hook Radiator Guard over the
top of the radiator







Reverse Stages

4 - 1



ESSENTIAL CHECKS

It is recommended that periodic inspections are made to ensure that dirt and debris have not become trapped between the guard and the radiator/oil cooler. Such dirt and debris would reduce the cooling efficiency of the radiator/oil cooler.

It is recommended that periodic inspections are made to ensure that all fixings are fully tightend.



EVOTECH®
P E R F O R M A N C E

www.evotech-performance.com