

Part Number: HD-ST-6-S(E)
HD-ST-6-TP, HD-ST-6-50S



Description: Heated & Non Heated Classic Solo Saddle

Fitment: 2006 Harley-Davidson Softail

Revision: 1

Tools Required	Parts List
<p>7/16" socket or combination wrench 1/2" socket or combination wrench 7/16 open wrench 10mm socket and driver wrench 5/32 Allen wrench</p>	<p>FRONT SADDLE: 1 #A00627 Front mounting bracket 1 #A00702 Rear mounting bracket 1 1/4 x 20 x 1/2" hex head bolt 1 1/4 x 20 flat washers 2 Keys</p> <p>REAR SADDLE: 2 #P10114 Latch pin 2 #P00545 Nylon caps 1 HD fender nut with nylock c-clip 2 Keys</p> <p>ELECTRIC OPTION: #FACC-05 Small Fuse Adapter #Ph-CB-HL Wiring Harness 3 Zip Ties</p>

NOTE: We recommend the use of Loctite® or similar thread lock compound when assembling parts on your motorcycle.

1. Your new Corbin solo saddle installs a bit different than your stock seat in order to use a new key-lock system. Bracket installation is a one-time deal, then your new saddle will go on and off with the included keys.
2. Start by removing your stock seat and belt strap. Remove the stock 5/16 x 1" bolts that's securing the oil tank. Install the front bracket using the stock bolts (*Figure 1*). Tighten to 8 ft. lbs. and don't forget to use Loctite®.
3. Install the rear mounting bracket by using the supplied 1/4 x 20 x 1/2 hex head bolt and washer (*Figure 2*). Tighten to 8 ft. lbs. and use Loctite®.

NOTE: If your bike has a bigger ignition module (on carburetor bikes) or ECU, the rear mounting bracket WILL fit the same as if you had the smaller module.



FIG 1

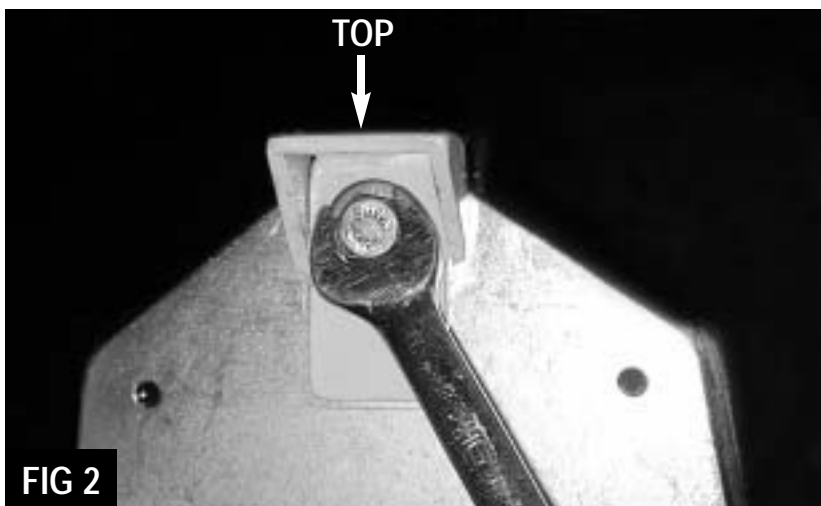


FIG 2

4. If you are installing a NON-heated seat, skip to step 13.

5. Disconnect the battery negative terminal.

6. Open the fuse box top cover. Remove the fuse from the ACCESSORIES position and insert the fuse into the adapter on the pigtail. (Figure 3)

7. Insert fuse adapter into the ACCESSORIES position of the fuse box. (Figure 4)

8. Attach the ground wire to the battery negative with a 10mm open wrench. Tighten the negative post securing the ground. (Figure 5)

9. Recover the fuse box with the stock fuse box cover.

10. Wind up the pigtail leaving approximately 5" of wiring to connect to the saddle. Tie the rest with the provided zip ties to the bikes wiring harness.

11. Be sure the ignition is turned off and you may now plug the pigtail into the wiring under the Corbin saddle.

12. Your heated seat is ready for a test drive. The heater is controlled by the switch along the side of the saddle. There is a low position and a high position and temperature will be controlled by an internal thermostat. Heat will only operate when motorcycle ignition is ON and takes a couple minutes to warm up.

NOTE: Heater controller shuts off automatically after 1 hour. Turn switch off and on to restart for another hour.

13. To install your solo saddle, slide the rear tongue into the rear mounting bracket you just installed and align it with the front latch. Push down on the front until you hear two clicks.

NOTE: If your saddle has too much play, you can adjust the rear mounting bracket on the saddle by using a 5/32 Allen wrench (Figure 6).



FIG 3



FIG 4



FIG 5



FIG 6

14. Once secured in place, simply insert the key and turn clockwise to disengage the lock and remove. If the saddle does not release, push down on the nose of the saddle to take pressure off the lock mechanism and then turn the key. Now pull up the nose of the saddle and remove.

15. To install the pillion seat, install the supplied latch pins with nylon caps into the last two holes in the fender (Figure 7). Tighten the latch pins snugly and use Loctite®.

NOTE: If your bike has only one fender nut, we supplied an extra H-D fender nut to use in the second fender hole.

NOTE: If the fender hole is hard to access, try threading a wire through the fender, hook the wire onto the fender nut and pull it up through the hole in the fender. (Figure 8)

16. Now you are ready to install your rear pillion saddle. To do this, slide the pillion onto the rear latch pin (Figure 9), push it back to align with the front latch pin and push down until you hear one click.

NOTE: If the rear or front mounting brackets doesn't want to latch, put a washer under the rear nylon cap.



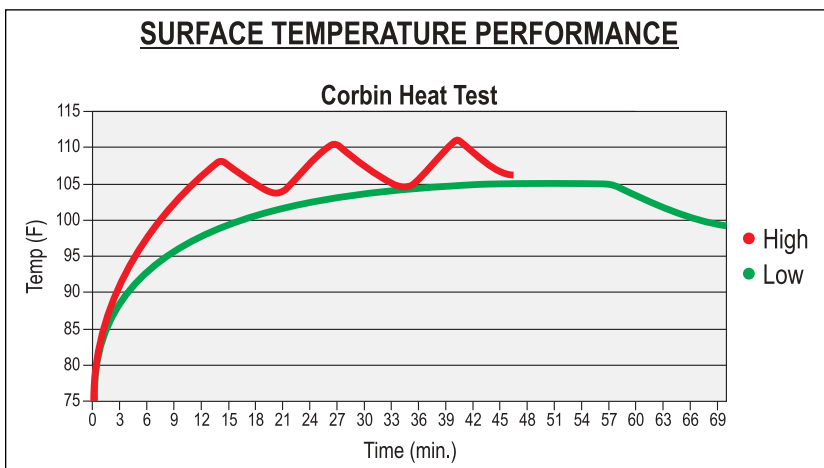
FIG 7



FIG 8



FIG 9



Questions? Give us a holler...
800-223-4332
tech@corbin.com