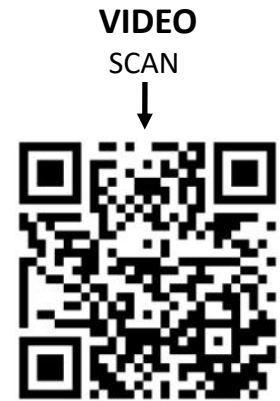


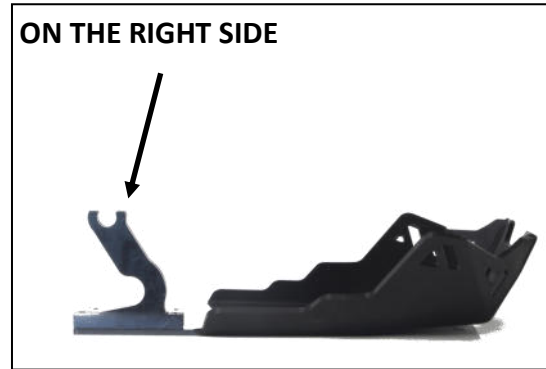


- | | |
|-----------------------------|------------------------------|
| 4 NE01-02-003 - Tfhc 6x25mm | 1 PM01-04-213 |
| 11 NE01-03-001 - M6 Washers | 1 PM01-04-214 |
| 11 NE01-04-003 - Em6f | 1 PM01-04-215 |
| 2 NE01-01-005 - Tbhc 8x35mm | 1 PM01-04-216 |
| 5 NE01-03-002 - M8 Wahsers | 1 PM01-04-217 |
| 3 NE01-02-006 - Tfhc 6x40mm | 1 PM01-14-001 |
| 3 NE01-01-014 - Tbhc 8x50mm | 1 NE04-01-184 (Grey sticker) |
| 4 NE01-02-005 - Tfhc 6x35mm | |

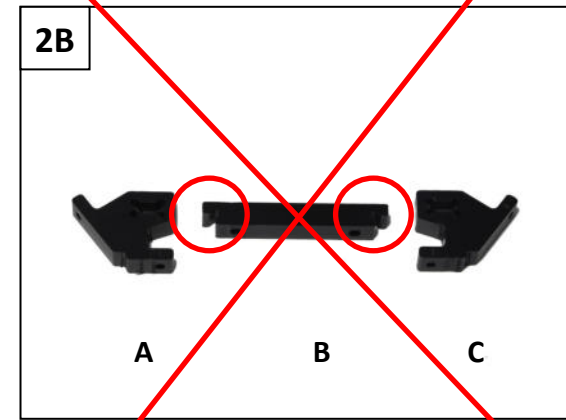
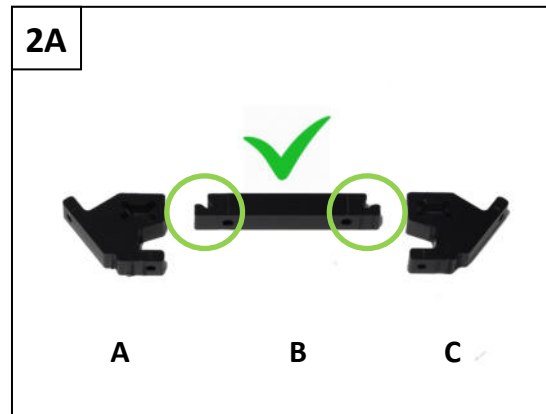
AX1600
Adventure Skid Plate
BMW GS1250

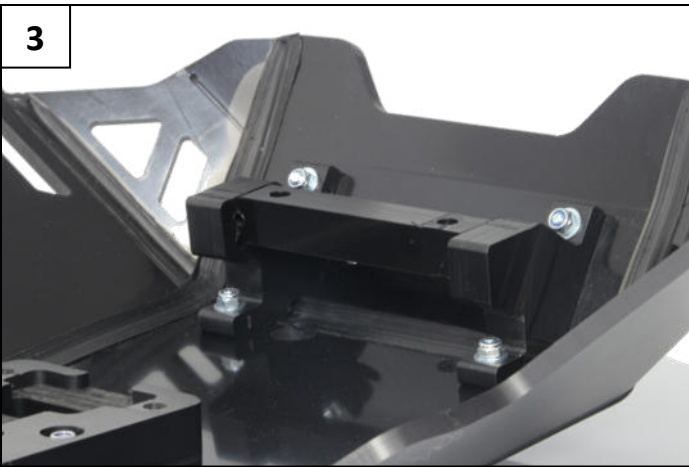


IMPORTANT ! Make sure to respect the way to place each of the plastic mounts exactly like the following pictures



IMPORTANT ! The « B » part has to be placed like picture « **2A** », not like picture « **2B** »





3
4 Tfhc 6x25mm + 4 Em6f + 4 M6 Washers



4.1
Fix the plastic block on the skid plate with 3 Tfhc 6x40mm + 3 Em6f + 3 M6 Washers



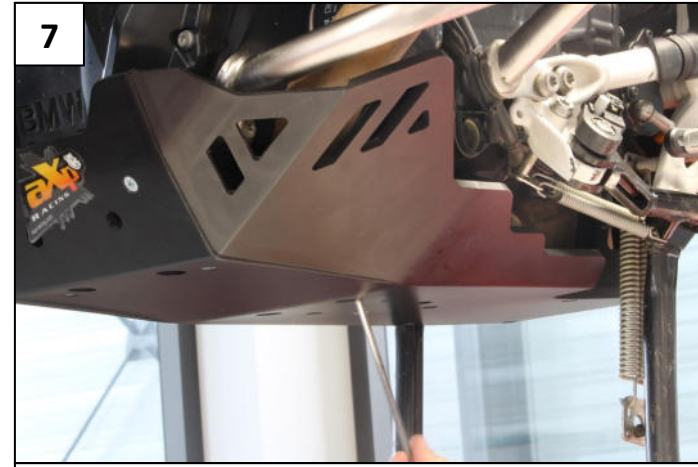
4.2
Fix the plastic block on the skid plate with 3 Tfhc 6x40mm + 3 Em6f + 3 M6 Washers



5
Fit the rear mount around the frame rear tube



6
Place the front Tbhc 8x35mm screws with M8 Washers



7
Place the 3 Tbhc 8x50mm screws in the middle of the skid plate with M8 Washers and tight everything

YOU CAN FIND MORE CONTENT ON OUR SOCIAL MEDIA AND FIND TUTORIAL VIDEOS ON YOUTUBE

