



AIRFRAME *HELMET*

INSTRUCTION MANUAL



WWW.RIDEICON.COM

AIRFRAME *INTRODUCTION*

The Icon Airframe helmet represents the pinnacle in modern helmet design. The helmet is equipped with multiple safety and comfort features, developed through exhaustive lab research and real world testing. Premier manufacturing processes assure that the helmet you have purchased meets the highest quality and safety standards in the world: DOT/Snell M2005. When fitted properly, the precisely engineered semi-rigid outer shell and energy absorbing dual-density EPS liner greatly reduce the possibility of head injuries in the event of an accident. Additionally the HydraDry comfort liner and extensive venting system combine to produce the industry's most ventilated and comfortable helmet.

Remember: a helmet will not protect you unless you are wearing it, the helmet is fitted properly, and the helmet is securely fastened on your head.



CONTENTS

| | |
|-----------------------|----|
| CONSTRUCTION | 3 |
| HELMET SIZE CHART | 4 |
| PROPER FITTING | 5 |
| CHINSTRAP | 6 |
| PROSHIELD | 7 |
| SHIELD CHANGE | 8 |
| SIDE PLATE REMOVAL | 8 |
| INTERIOR | 9 |
| COMFORT LINER REMOVAL | 10 |
| SUPERVENT SYSTEM | 12 |
| CARE AND CLEANING | 13 |
| REPLACEMENT | 13 |
| ADVISORY | 14 |

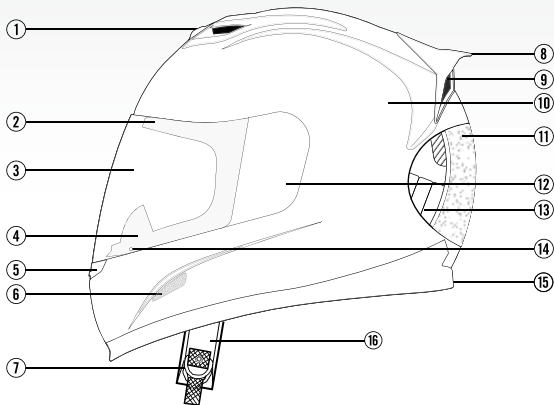


icon

CONSTRUCTION

The Airframe composite fiberglass & Dyneema® handcrafted shell has been designed and developed with safety and comfort in mind. With our integrated Supervent system, dual density impact absorbent EPS liner, three shell sizes, and locking Proshield visor, the Airframe is built to help keep you cool, safe and focused.

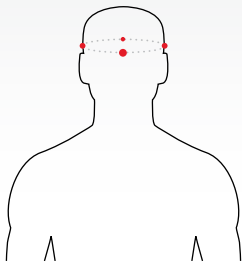
- ① SUPERVENT
- ② EYEPORT GASKET
- ③ FACE SHIELD
- ④ BREATH DEFLECTOR
- ⑤ MOUTH VENT
- ⑥ SIDE VENT
- ⑦ DOUBLE "D" RING
- ⑧ SPOILER
- ⑨ REAR VENT
- ⑩ OUTER SHELL
- ⑪ IMPACT ABSORBENT LINER
- ⑫ SIDE PLATE
- ⑬ COMFORT LINER
- ⑭ PIN LOCK
- ⑮ BASE GASKET
- ⑯ CHINSTRAP



MAKE NO MODIFICATIONS. To maintain the full effectiveness of this helmet, there should be no alteration to the structure of this helmet or its component parts. Paints and adhesives may damage and render your helmet ineffective, without the damage visible to the user.

HELMET SIZING CHART

For your safety, please choose a helmet in the size which fits your head. Remember, a helmet will not do a motorcyclist any good unless it is fitted and worn properly.



HEAD MEASUREMENT

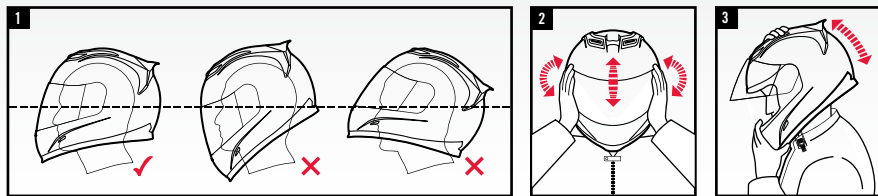
1. WRAP FLEXIBLE TAPE MEASURE APPROXIMATELY ONE INCH ABOVE EYEBROWS AND EARS
2. USE THIS MEASUREMENT TO FIND YOUR "INCHES" OR "CENTIMETERS" HEAD SIZE IN OUR HELMET SIZING CHART

HELMET SIZING CHART

| SHELL | XXS | XS | S | M | L | XL | 2XL | 3XL (DOT ONLY) |
|-------------|---|---|-------------------------------------|---|---|---|---|---|
| HAT SIZE | 6 ³ / ₈ - 6 ¹ / ₂ | 6 ⁵ / ₈ - 6 ³ / ₄ | 6 ⁷ / ₈ - 7 | 7 ¹ / ₈ - 7 ¹ / ₄ | 7 ³ / ₈ - 7 ¹ / ₂ | 7 ⁵ / ₈ - 7 ³ / ₄ | 7 ⁷ / ₈ - 8 | 8 ¹ / ₈ - 8 ¹ / ₄ |
| INCHES | 20-20 ¹ / ₂ | 20 ⁷ / ₈ - 21 ¹ / ₄ | 21 ⁵ / ₈ - 22 | 22 ³ / ₈ - 22 ³ / ₄ | 23 ¹ / ₈ - 23 ¹ / ₂ | 24 - 24 ³ / ₈ | 24 ³ / ₄ - 25 ¹ / ₈ | 25 ¹ / ₂ - 26 |
| CENTIMETERS | 51-52 | 53-54 | 55-56 | 57-58 | 59-60 | 61-62 | 63-64 | 65-66 |

PROPER FITTING

No helmet can protect the user against all foreseeable impacts. For your safety, please choose a helmet in the size which fits your head (refer to the helmet size chart on page 4). For maximum head protection, your helmet must be of proper fit, and the retention system must be securely fastened under the chin. To ensure a proper fit, please follow the steps below:

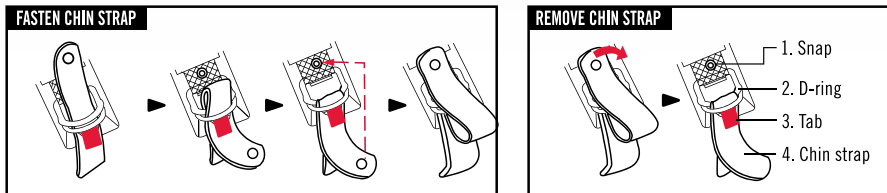


1. Position the helmet on your head so that it sits low on your forehead. If you can't see the edge of the brim at the extreme upper range of your vision, the helmet is probably out of place. Adjust the retention system so that when in use, it will hold the helmet firmly in place.
2. With the chinstrap still fastened as tightly as possible, take hold of the helmet with both hands. Without moving your head, try to move the helmet up and down, and from side to side. You should feel the skin of your head and face being pulled as you try to move the helmet. If you can move the helmet around easily, it is too big. Try a smaller size.
3. Now, with the chinstrap secured, put your hands flat on the back of the helmet and try to pull the helmet off by rotating it forward. Then, put your hands on the front of the helmet, and try to push the helmet off by rotating it toward the rear. If the helmet starts to come off in either direction, the helmet is either too large, or the chinstrap is not fastened tightly enough.

CHIN STRAP

In order for your helmet to function properly the chinstrap must always be securely fastened while in use. With the chin strap fastened, it should not be possible to remove the helmet from your head by pulling up at the center rear. Check periodically to see that the vibration has not caused the chin strap to loosen. Just give a little tug to make sure it is still tight.

To securely fasten the D-ring retention system, thread the end of the chin strap through the D-rings only as shown in the diagram below. Fasten the female snap of the chin strap to the male snap to secure the loose end of the chin strap after the chin strap is securely fastened. The only function of the snap fastener on the end of the chin strap is to keep it from flapping in the air stream. It is not part of the retention system and should not be used independently without passing through the D-rings as illustrated below.



Please make sure that the chin strap is fastened as instructed above. Failure to do so may result in fatal injury.

AIRFRAME PROSHIELD

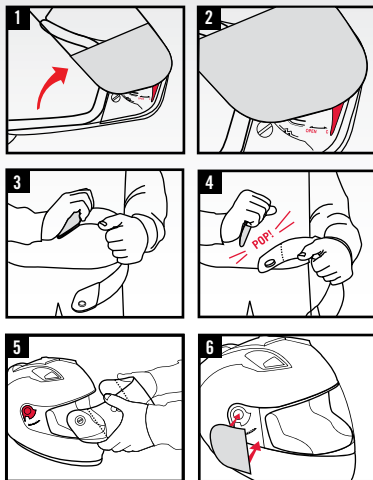
Proshield precision optics by Icon provide you with a clear undistorted line of sight. All Icon Proshields include our quick change ratcheting system, Prolock visor lock, and sideplate covers. Icon Proshields are also offered in a variety of tinted styles, and meet or exceed Vehicle Safety Commission Regulations (VESC-8).

A close-up photograph of a motorcycle helmet's visor. The visor is white and curved, set against a dark background. The Icon Proshield logo is visible on the right side of the visor. The logo consists of the word 'icon' in a stylized, lowercase font with a horizontal line through the middle, and the word 'PROSHIELD' in a smaller, uppercase font below it.

icon
PROSHIELD

SHIELD CHANGE & SIDE PLATE REMOVAL

1. To remove the shield, open the shield completely.
2. Push both orange locking levers to the open position towards the front of the helmet and remove the shield from the gear plates.
3. Once removed, brace the shield with one hand, and use the other hand to pull the side plates from the straight, long edge (the front of the side plates).
4. Pull each side plate until they pop free from the shield.
5. To replace shield, slide the orange locking levers in open position towards the front of the helmet and align the tabs on shield with holes on the gear plates until secure. Push the orange locking levers to the closed position.
6. To replace the side plates, align tabs on side plates with holes in shield, and pop it into place.
7. Test out the opening and closing function of your shield before riding.

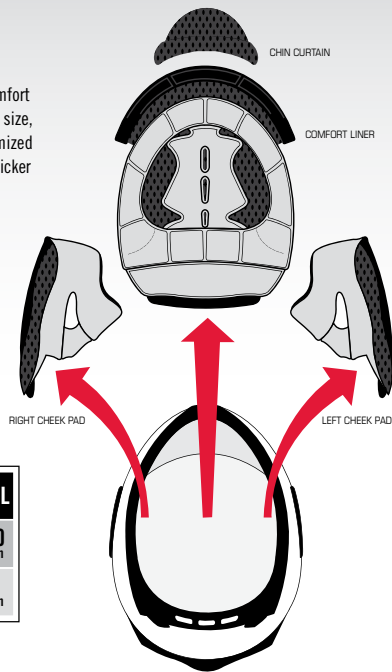


***The visor should not be excessively cold when the side plates are being re-fitted, otherwise damage may occur.**

INTERIOR

Icon helmets feature a fully customizable HydraDry™ moisture wicking interior comfort liner. The size of a helmet is based on a combination of three factors: outer shell size, inner eps thickness, and cheekpad thickness. The fit of the helmet can be customized by replacing your existing cheekpads with thinner cheekpads (for a looser fit), or thicker cheekpads (for a tighter fit).

HYDRADRY™
PERFORMANCE WICKING TEXTILE

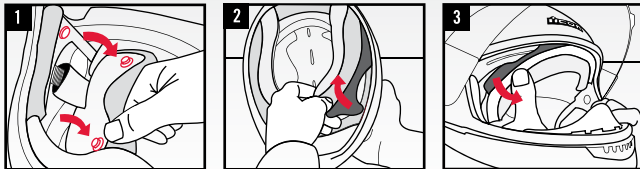


| HELMET SHELL SIZE | XXS | XS | S | M | L | XL | XXL | 3XL |
|--|----------|----------|----------|----------|----------|----------|----------|----------|
| CHEEK PAD SIZE <small>SEE YOUR LOCAL DEALER FOR ORDERING.</small> | 35 mm | 30 mm | 30 mm | 25 mm | 30 mm | 25 mm | 20 mm | 20 mm |
| COMFORT LINER SIZE <small>SEE YOUR LOCAL DEALER FOR ORDERING.</small> | 15 mm | 12 mm | 15 mm | 12 mm | 12 mm | 9 mm | 7 mm | 7 mm |

*PLEASE NOTE: YOUR HELMET SHELL SIZE CAN BE FOUND BY FOLLOWING THE STEPS ON PAGE 4

COMFORT LINER REMOVAL

How to remove your interior for cleaning or replacement:



1. Release each cheekpad from the helmet by pulling inward, freeing it from the three snap system.
2. Flip your helmet over and pull on the cheekpad. Note how the cheekpad plate slips between the helmet shell and EPS liner for reassembly.
3. Remove your comfort liner by releasing it from the two snap system on the back of the helmet. Then remove the crown comfort liner attachment point, taking note of how the crown plate attachment slips into place between the shell and EPS liner.

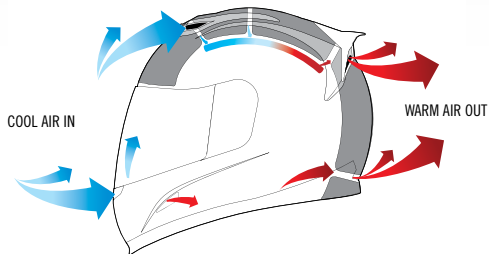
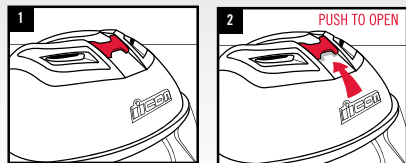
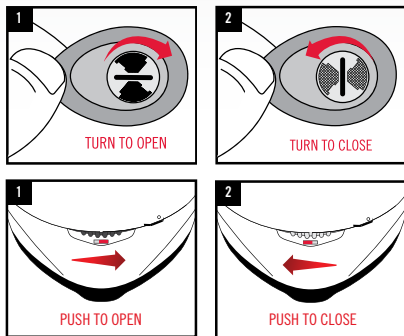
AIRFRAME *SUPERVENT*

The Airframe helmet's ventilation system consist of several strategically placed air intakes, vents, air channels, and exhaust ports. The main ingredient in venting the Airframe is the Icon Supervent featuring industry leading oversized intake and exhaust ports located in the front and rear of the Supervent. These ports are controlled by the main vent on/off switch. When activated, air is forced directly into the helmet, at both high and low speeds. Air is channeled between the comfort liner and protective EPS liner, expelling through the exhaust ports.

SUPERVENT SYSTEM

To activate the Airframe's supervent system simply slide the main vent switch, Fig. #1, back towards the rear of the helmet. Fig. #2 shows it in the open position. To close, slide forward, towards the front of the helmet.

Fine tuning of airflow into the helmet is handled by the mouth vent, internal chin bar airports, and rear side vent exhaust holes.



CARE AND CLEANING

Let's face it, Icon helmets look cool and you want to keep them that way. We've found the following methods work really well to keep our helmets looking sharp and ready to roll. Remember, never use gas, pre-mix, carb cleaner, brake cleaner or any other random unlabeled spray can lying around the garage. Chemicals and harsh solvents can break down the materials in your helmet; it's like using brake cleaner to polish your plastics—don't do it!

INTERIOR CLEANING

1. Remove interior lining as shown on page 10.
2. Soak your interior in a mild solution of baby shampoo.
3. Rinse in clean water several times until all soap is gone.
4. Let interior air dry and replace accordingly.

* Never machine wash or dry your helmet interior.

EXTERIOR CLEANING

1. Use a water soaked cloth to soften bugs and dirt on the helmet.
2. Wipe away any excess water or dirt with a soft dry cloth.

EXTERIOR POLISHING

1. For gloss helmet finishes, use spray automotive wax that is specifically designed for cars with a clear coat. (Available at any automotive store.)
2. For matte finishes, you know better than to polish a matte finish don't you?

STORAGE

It is a good idea to protect your helmet if it is stored for a period of time. Store your helmet inside the helmet bag we have provided in a secure, dry place out of direct exposure to sunlight.

REPLACEMENT RECOMMENDATION

The five year replacement recommendation is based on a consensus of all helmet manufacturers and the Snell Memorial Foundation, which certifies all Icon helmets. Glues, resins and other materials used in helmet production can effect liner materials over time. Hair oils, body fluids and cosmetics, as well as normal "wear and tear" also contribute to helmet degradation. Additionally, petroleum based products present in cleaners, paints, fuels, and other commonly encountered materials may break down materials used in many helmets, possibly compromising performance. Experience indicates that helmet standards are revised every five years. This, coupled with advances in materials, designs, and production methods suggest that it is in the riders best interest to replace his/her helmet at a minimum of every five years.



ADVISORY

Although your helmet is solid and very well constructed, it should be handled with care, dropping a helmet on the ground, or other hard surfaces may eventually degrade the helmet's performance. Additionally, if the helmet falls to the ground at highway speeds unoccupied, the owner must be aware that some unseen damage may have occurred.

SNELL RECOMMENDATION

The Snell Memorial Foundation advises that if you are participating in an activity that requires you to wear a helmet, it is strongly recommended that you avoid hitting anything with your head. The Foundation also states that if you suspect your helmet has been compromised, or the helmet has been involved in an impact while in use, replace it. For more information, visit <http://www.smf.org/>



DO NOT USE THE SUPERVENT SPOILER AS A HANDLE. THE SUPERVENT AND ITS PARTS ARE ENGINEERED TO BREAK AWAY IN THE EVENT OF A CRASH.



REVIEW THE "SIDEPLATE REMOVAL" SECTION OF OWNERS MANUAL BEFORE REMOVING SIDEPLATES.



DO NOT REST YOUR HELMET ON THE GAS TANK. GAS VAPORS CAN DESTROY THE HELMET'S IMPACT-ABSORBING LINER.

ICON IS A REGISTERED TRADEMARK. ALL RIGHTS RESERVED. COPYRIGHT © 2007 LEMANS CORPORATION. REPLACEMENT PARTS AND SPECIFICATIONS SUBJECT TO CHANGE WITHOUT NOTICE. PRINTED IN THE USA. REV. 01.

J-TECH CORP. MADE IN KOREA