



# INSTALLATION INSTRUCTIONS

## PRO DUALS | TOURING®

### MINIMUM REQUIRED TOOLS:



FLAT HEAD SCREWDRIVER



1/2", 9/16", 14mm, 7/8" or 22mm WRENCHES



5/16", 1/2", 9/16" SOCKETS AND RATCHET



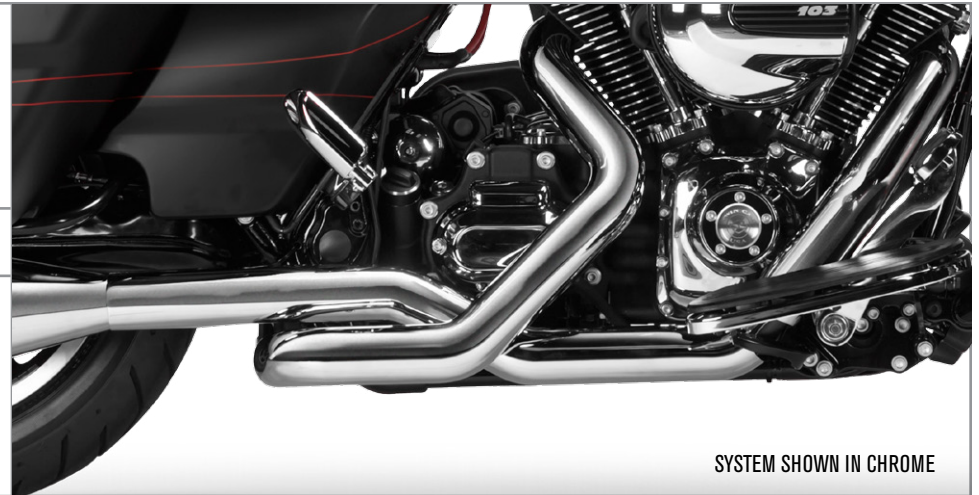
SNAP RING PLIERS



3/16", 1/4", 5/16" ALLEN WRENCH



TORQUE WRENCH



SYSTEM SHOWN IN CHROME

### INCLUDED HARDWARE:



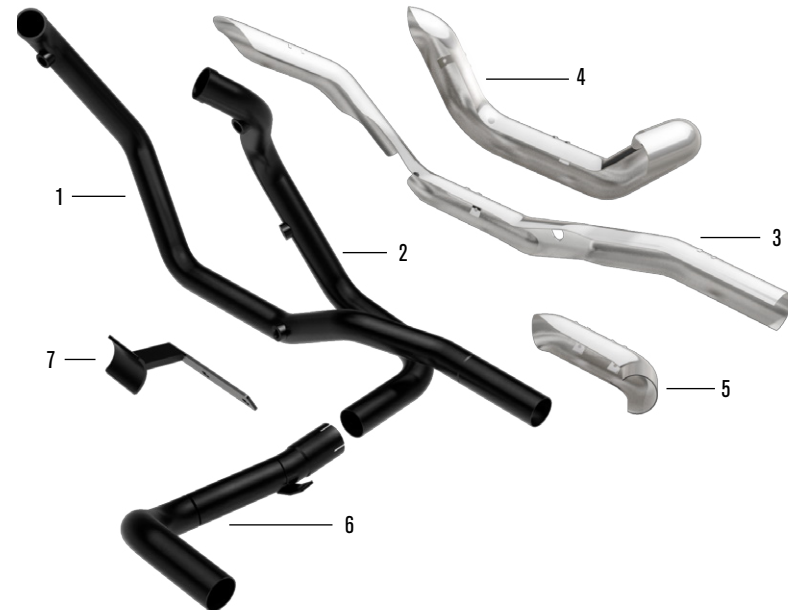
- 1. (2) PLUG HEX SOCKET O2 18-1.50MM C
- 2. (2) PLUG HEX SOCKET O2 12-1.25MM C
- 3. (1) SMALL SPACER BLK
- 4. (1) LARGE SPACER BLK
- 5. (2) CLAMP 1.75 BAND EXHAUST SS
- 6. (8) CLAMP 1.75 BAND HS SS
- 7. (1) THREADLOCKER

- 8. (1) SCREW SHCS 3/8-16X3.00 ZINC
- 9. (1) WASHER SPLIT LOCK 3/8" GR5 CLR ZINC
- 10. (1) SCREW SHCS 3/8-16X1.50 ZINC

### YEAR 2009-2015

**CHROME** PART # 7210605

**BLACK** PART # 7210606



- 1. FRONT HEAD PIPE
- 2. REAR HEAD PIPE
- 3. FRONT HEAT SHIELD
- 4. REAR HEAT SHIELD
- 5. LEFT HEAT SHIELD
- 6. LEFT HEAD PIPE
- 7. MOUNTING BRACKET



## IMPORTANT INFORMATION

1. Register your new product at [www.magnaflow.com/motorcycle/register](http://www.magnaflow.com/motorcycle/register).
2. When installing new MagnaFlow exhaust systems, be sure your hands are clean and free of oil, lotion or similar products. After installation is completed and before starting the motorcycle, thoroughly clear the new exhaust system with a clean, soft cloth and cleaning solvent that leaves no residue. Debris, residue or fingerprints left on the system may cause damage to the finish. Damage or discoloration to finish is not covered by warranty.
3. MagnaFlow advises replacing worn or damaged gaskets.
4. Make sure there are no exhaust leaks at the junctions and connecting points of the exhaust pipes and/or mufflers, or at the cylinder.
5. Leaks due to improper installation may cause the engine to overheat. This may cause discoloration.

Maximize your motorcycles performance and efficiency by complementing your new MagnaFlow exhaust system with a fuel tuner management system and or EFI remapping. Remapping is suggested to optimize performance while reducing the possibility of damage to your engine or new exhaust system.

MagnaFlow makes every effort to design exhaust systems which improve the riding experience. However, due to restraints on some motorcycle models, tolerances, ground and or cornering clearance may not improve and in some cases may be reduced. Be sure to carefully follow all installation instructions.

Disclaimer: Some part numbers not available in California. The California Air Resources Board (CARB) does not permit the use of aftermarket emission-related part(s) that alter the performance of OEM emission-related devices unless CARB has issued an Executive Order. Check Federal, State and local laws for compliancy.

Platforms, model names and descriptions including but not limited to Dyna®, Softail®, Sportster®, Touring®, Fat Boy®, Road Glide®, Heritage® and Harley® are registered trademarks of The Harley-Davidson Motor Company®, Milwaukee, WI, U.S.A.

### CALIFORNIA EMISSIONS NOTICE

Some part numbers are not legal for sale or use in California. The California Air Resources Board (CARB) does not permit the use of aftermarket emission-related part(s) that alter the performance of OEM emission-related devices unless CARB has issued an Executive Order, other than on racing vehicles on closed courses. Check your local laws and manufacturer's information.

In California, the sale and installation of motorcycle aftermarket exhaust parts that may have the potential to impact emissions are regulated by the California Air Resources Board (CARB). The sale, installation and use of emissions related aftermarket exhaust parts on motorcycles is prohibited unless the exhaust part is either an OEM "replacement part" as defined by the state California, or is specifically authorized for use by an Executive Order issued by CARB.

#### (1) Replacement Parts

Replacement Parts are aftermarket parts that are functionally identical to the stock OEM part they are intended to replace, and therefore do not adversely impact emissions when installed and in use. Replacement Parts are permitted for sale, installation and use on motorcycles used on or off the public highways in California. For motorcycles, these parts fall in to two categories:

\* No emission control - If the motorcycle's stock exhaust system does not contain any emission control components, then an aftermarket exhaust part is a Replacement Part and no EO is required.

### CALIFORNIA EMISSIONS NOTICE (CONT.)

\* Upstream emission control devise. If the motorcycle's stock exhaust system contains a catalytic converter, then an aftermarket exhaust part positioned downstream from the catalytic converter (i.e. cat-back) is a Replacement Part as long as it does not remove, replace or adversely affect any emission control equipment originally attached to the stock exhaust system.

#### (2) Executive Order Parts

All exhaust parts that incorporate or impact any emission control devise require a CARB issued Executive Order allowing the parts to be advertised, sold, offered for sale and installed in California, pursuant to specific application.

For more information please visit <http://www.arb.ca.gov/msprog/aftermkt/motorcycle1/motorcycle1.htm>

### WARRANTY:

MagnaFlow motorcycle exhaust products, including Arlen Ness by MagnaFlow exhaust systems, are warranted against defects in material and/or assembly workmanship only for a period of 90 days from invoice date. This warranty is void if the product is not installed properly on the vehicle for which it is designed. This warranty does not apply to any product which has been installed on any commercial or racing vehicle or which has been improperly installed, modified, altered or subjected to misuse or damage from accidents; including excessive heat. Also, cost of labor and any additional parts or components required to complete installation of a replacement product are not covered by this warranty; including coatings, paints and/or finishes, flaws or rust. MagnaFlow including Arlen Ness by MagnaFlow exhaust systems are designed to fit and operate on original OEM motors and chassis with no modifications of any type on the motorcycle.

Proof of purchase from an authorized retailer must accompany any warranty claim. The original product that is deemed to be under warranty may only be returned and/or exchanged for a product of the same part number. No other warranty, expressed or implied (including merchantability), applies to the products, nor is any person including the manufacturer authorized to assume any other warranty. Dealers and distributors are not authorized to make warranty judgments or claims regarding MagnaFlow products. The manufacturer does not assume any responsibility for any consequential damages occasioned by the product, or inconvenience or interruption in any operation, service or shipping. All approved warranty returns must be accompanied by a return authorization number. Parts returned to MagnaFlow without a return authorization and accompanying documentation may be refused. No parts will be accepted with freight due.

This warranty gives you specific legal rights. You may also have other rights which may vary from state to state. Some states do not allow the exclusion or limitation of incidental or consequential damages, so the above limitation or exclusion may not apply to you.

The warranties set forth herein are exclusive and, unless otherwise required by applicable law, no other warranties are made by MagnaFlow or are authorized to be made with respect to the product.

**PLEASE NOTE:**

Several MagnaFlow motorcycle exhaust systems are designed to be used with O2 and non-O2 sensor applications. If your motorcycle does not come equipped with O2 sensors, simply skip any steps referring to them.

Also, make sure to retain all factory hardware and brackets as they may be used during the installation process.

1. Locate and remove the two D-ring pins inside of each saddlebag. (Figure 1)



Fig.1a



Fig.1b

2. Remove each saddlebag by carefully lifting them up and away from the motorcycle. Safely set saddlebags to the side. (Figure 2)



Fig.2

3. Locate and loosen the factory clamp at the inlet side of the OEM mufflers. (Figure 3)



Fig.3

4. Remove the two 5/16 inch bolts and washers attaching each muffler to the saddlebag mounts. (Figure 4)

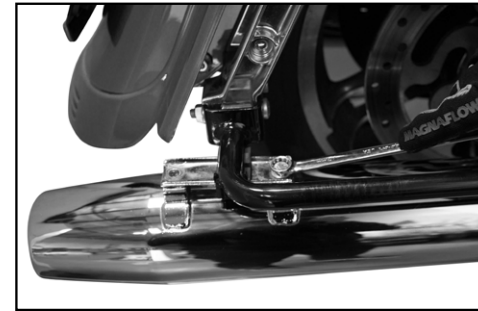


Fig.4

5. Slide each muffler towards the rear of the bike to remove it from the head pipe assembly. *Note: Penetrating lubrication may be necessary to assist in the removal of the muffler. (Figure 5)*

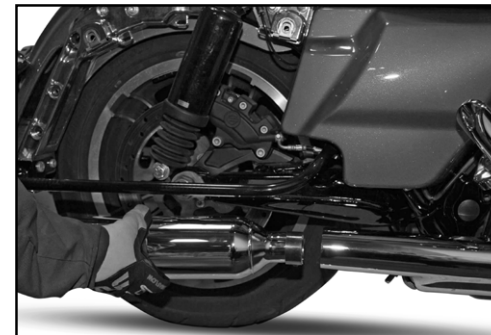


Fig.5

6. Remove the mid section and rear cylinder heat shields by removing the heat shield clamps. (Figure 6)



Fig.6a



Fig.6b

7. Locate and remove the two mounting bolts holding the right floorboard. (Figure 7)

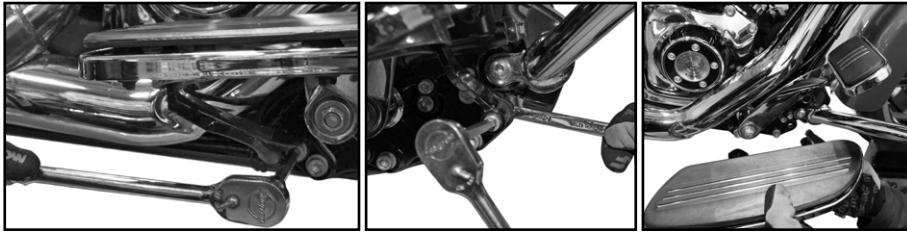


Fig.7a

Fig.7b

Fig.7c

8. Remove the front cylinder heat shield by removing the heat shield clamps. (Figure 8)



Fig.8

9. Locate and remove the left side head pipe mounting bolt and loosen the connector clamp located underneath the motorcycle. (Figure 9)



Fig.9

10. Remove the left side head pipe assembly.

11. Locate and remove the four exhaust flange mounting nuts on each cylinder. (Figure 10)

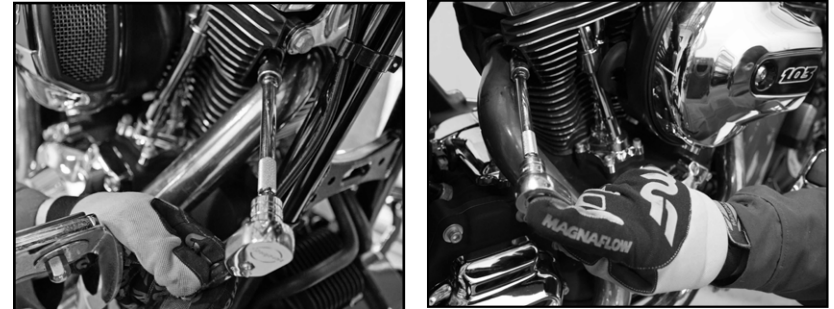


Fig.10a

Fig.10b

12. Remove the head pipe assembly mounting nut and head pipe assembly. (Figure 11)



Fig.11

13. Remove the two O2 sensors from the head pipe assembly. To insure continued performance from your stock O2 sensors, keep any fingerprints, debris, or chemicals away from the tips.

14. Locate and remove the two mounting bracket screws and mounting bracket. (Figure 12)



Fig.12

15. From the stock head pipe assembly, remove the circlips and mounting flanges to reuse with the new system. Be sure to replace any reused hardware that is worn or damaged before installing your Magnaflow motorcycle exhaust system.

## PLEASE NOTE:

Several MagnaFlow motorcycle exhaust systems are designed to be used with O2 and non-O2 sensor applications. If your motorcycle does not come equipped with O2 sensors, simply skip any steps referring to them. It will be necessary to install the supplied O2 sensor plugs during the installation process.

Also, make sure to retain all factory hardware and brackets as they may be used during the installation process.

1. Install the new MagnaFlow exhaust mounting bracket supplied in the kit using the factory screws. Do not tighten at this time to allow for adjustment. (Figure 13)



Fig. 13

2. Install the factory mounting flanges and circlips, removed from the factory system, on the new head pipes. (Figure 14)



Fig. 14

3. Carefully install the factory O2 sensors into the new head pipes.
4. Install the front head pipe to the exhaust port using the factory exhaust port nuts. Do not tight the nuts at this time to allow for adjustment.
5. Slide the supplied 1.75 inch exhaust clamp onto the front head pipe and the mounting bracket. Do not tight the clamp at this time to allow for adjustment. (Figure 15)



Fig. 15

6. Insert the supplied heat shield clamps to the heat shields by inserting the end of the clamp through the retaining bracket. (Figure 16)



Fig. 16

7. Attach the front heat shield to the front head pipe using the heat shield clamps. Do not tight the clamp at this time to allow for adjustment. (Figure 17)



Fig. 17

8. Install the rear head pipe to the exhaust port using the factory exhaust port nuts. Make sure that the rear head pipe lines up with the cut out in the front head shield. Do not tight the nuts at this time to allow for adjustment. (Figure 18a, 18b)



Fig. 18a



Fig. 18b

9. Insert the left head pipe into the rear head pipe and attach it using the supplied 1.75 inch exhaust clamp. (Figure 19)



Fig. 19

10. Using the factory bolt and washer, attach the head pipe assembly to the bottom of the transmission. Do not tight the bolt at this time to allow for adjustment. (Figure 19)

11. Attach the rear and left heat shields to the rear and left head pipes using the heat shield clamps. Do not tight the clamp at this time to allow for adjustment. (Figure 20)



Fig. 20

12. Re-install the existing mufflers by reversing steps 1-5 of the removal instructions. Or complete your performance upgrade package by choosing MagnaFlow mufflers. For a complete product listing, visit [MagnaFlow.com](http://MagnaFlow.com)

13. Adjust the exhaust system as necessary and tighten all of the bolts and clamps.

14. Install the supplied floor board spacers using the supplied (Figure 21 a) 3/8-16 x 3.00, (Figure 21b) 3/8-16 x 1.50 inch bolts and factory hardware.



Fig. 21a



Fig. 21b

15. Re-route and plug in the O2 sensors to the factory harness. Secure the harness wire using the supplied cable tie.

16. Before starting the motorcycle, make sure to check that all of the exhaust components including O2 wiring have been properly installed and have proper clearance to avoid damage. Make sure that all hardware has been tightened to factory specifications. Please reference item 2 on the Important Information page.

Note: Remapping the EFI unit is suggested to optimize performance while reducing the possibility of damage to your engine or new exhaust system.